



[Go to Product page](#)

Datasheet for ABIN652586

anti-Caveolin 2 antibody (N-Term)

4 Images

Overview

Quantity:	400 µL
Target:	Caveolin 2 (CAV2)
Binding Specificity:	AA 11-44, N-Term
Reactivity:	Human
Host:	Rabbit
Clonality:	Polyclonal
Conjugate:	This Caveolin 2 antibody is un-conjugated
Application:	Western Blotting (WB), Immunohistochemistry (Paraffin-embedded Sections) (IHC (p)), Immunofluorescence (IF), Flow Cytometry (FACS)

Product Details

Immunogen:	This CAV2 antibody is generated from rabbits immunized with a KLH conjugated synthetic peptide between 11-44 amino acids from the N-terminal region of human CAV2.
Clone:	RB16483
Isotype:	Ig Fraction
Purification:	This antibody is prepared by Saturated Ammonium Sulfate (SAS) precipitation followed by dialysis against PBS.

Target Details

Target:	Caveolin 2 (CAV2)
Alternative Name:	CAV2 (CAV2 Products)

Target Details

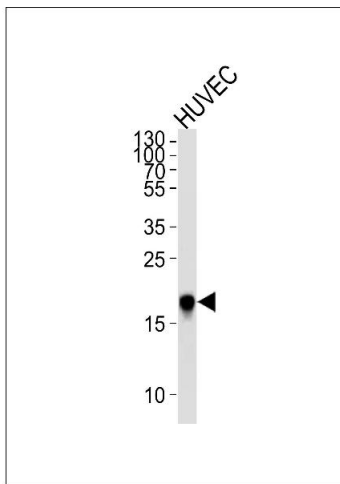
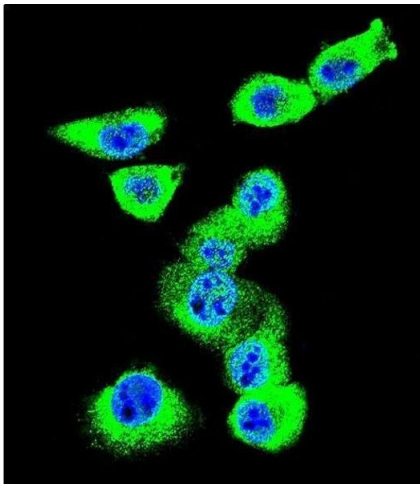
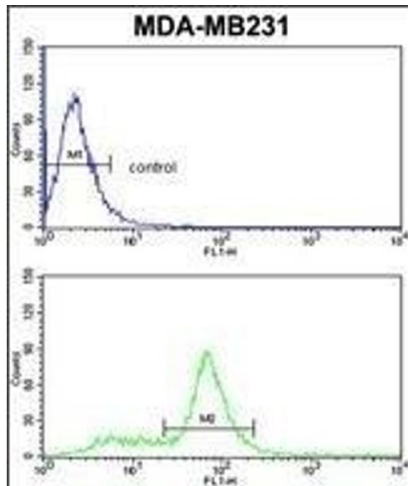
Background:	CAV2 is a major component of the inner surface of caveolae, small invaginations of the plasma membrane, and is involved in essential cellular functions, including signal transduction, lipid metabolism, cellular growth control and apoptosis. This protein may function as a tumor suppressor.
Molecular Weight:	18291
Gene ID:	858
NCBI Accession:	NP_001193676 , NP_001193677 , NP_001224 , NP_937855
UniProt:	P51636
Pathways:	Regulation of G-Protein Coupled Receptor Protein Signaling , Skeletal Muscle Fiber Development

Application Details

Application Notes:	IF: 1:10~50. WB: 1:1000. IHC-P: 1:50~100. FC: 1:10~50
Restrictions:	For Research Use only

Handling

Format:	Liquid
Buffer:	Purified polyclonal antibody supplied in PBS with 0.09 % (W/V) sodium azide.
Preservative:	Sodium azide
Precaution of Use:	This product contains Sodium azide: a POISONOUS AND HAZARDOUS SUBSTANCE which should be handled by trained staff only.
Storage:	4 °C,-20 °C
Storage Comment:	Maintain refrigerated at 2-8 °C for up to 6 months. For long term storage store at -20 °C in small aliquots to prevent freeze-thaw cycles.
Expiry Date:	6 months



Flow Cytometry

Image 1. CAV2 Antibody (N-term) (ABIN652586 and ABIN2842393) flow cytometric analysis of MDA-M cells (bottom histogram) compared to a negative control cell (top histogram). FITC-conjugated goat-anti-rabbit secondary antibodies were used for the analysis.

Immunofluorescence

Image 2. Confocal immunofluorescent analysis of CAV2 Antibody (N-term) (ABIN652586 and ABIN2842393) with MDA-M cell followed by Alexa Fluor 488-conjugated goat anti-rabbit IgG (green). DAPI was used to stain the cell nuclear (blue).

Western Blotting

Image 3. Western blot analysis of lysate from HUVEC cell line, using CAV2 Antibody (N-term) (ABIN652586 and ABIN2842393). (ABIN652586 and ABIN2842393) was diluted at 1:1000 at each lane. A goat anti-rabbit IgG H&L(HRP) at 1:5000 dilution was used as the secondary antibody. Lysate at 35 µg per lane.

Please check the [product details page](#) for more images. Overall 4 images are available for ABIN652586.