

Datasheet for ABIN652588
anti-CYP4F3 antibody (N-Term)[Go to Product page](#)

2 Images

Overview

Quantity:	400 µL
Target:	CYP4F3
Binding Specificity:	AA 77-109, N-Term
Reactivity:	Human
Host:	Rabbit
Clonality:	Polyclonal
Conjugate:	This CYP4F3 antibody is un-conjugated
Application:	Western Blotting (WB), Flow Cytometry (FACS)

Product Details

Immunogen:	This CYP4F3 antibody is generated from rabbits immunized with a KLH conjugated synthetic peptide between 77-109 amino acids from the N-terminal region of human CYP4F3.
Clone:	RB16496
Isotype:	Ig Fraction
Purification:	This antibody is prepared by Saturated Ammonium Sulfate (SAS) precipitation followed by dialysis against PBS.

Target Details

Target:	CYP4F3
Alternative Name:	CYP4F3 (CYP4F3 Products)

Target Details

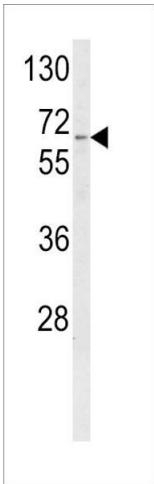
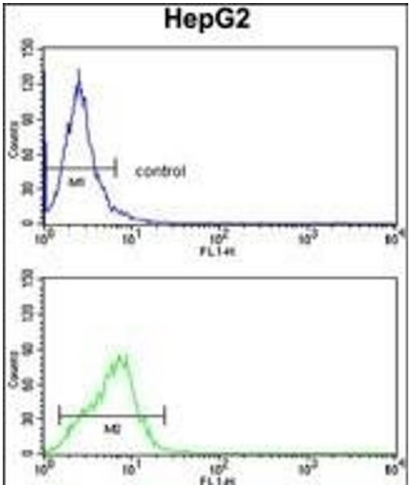
Background:	CYP4F3 is a member of the cytochrome P450 superfamily of enzymes. The cytochrome P450 proteins are monooxygenases which catalyze many reactions involved in drug metabolism and synthesis of cholesterol, steroids and other lipids. This protein localizes to the endoplasmic reticulum. The enzyme starts the process of inactivating and degrading leukotriene B4, a potent mediator of inflammation.
Molecular Weight:	59847
Gene ID:	4051
NCBI Accession:	NP_000887 , NP_001186137 , NP_001186138
UniProt:	Q08477
Pathways:	Steroid Hormone Biosynthesis , C21-Steroid Hormone Metabolic Process , Monocarboxylic Acid Catabolic Process

Application Details

Application Notes:	WB: 1:1000. FC: 1:10~50
Restrictions:	For Research Use only

Handling

Format:	Liquid
Buffer:	Purified polyclonal antibody supplied in PBS with 0.09 % (W/V) sodium azide.
Preservative:	Sodium azide
Precaution of Use:	This product contains Sodium azide: a POISONOUS AND HAZARDOUS SUBSTANCE which should be handled by trained staff only.
Storage:	4 °C,-20 °C
Storage Comment:	Maintain refrigerated at 2-8 °C for up to 6 months. For long term storage store at -20 °C in small aliquots to prevent freeze-thaw cycles.
Expiry Date:	6 months



Flow Cytometry

Image 1. CYP4F3 Antibody (N-term) (ABIN652588 and ABIN2842394) flow cytometry analysis of HepG2 cells (bottom histogram) compared to a negative control cell (top histogram). FITC-conjugated goat-anti-rabbit secondary antibodies were used for the analysis.

Western Blotting

Image 2. Western blot analysis of CYP4F3 Antibody (N-term) (ABIN652588 and ABIN2842394) in K562 cell line lysates (35 µg/lane). CYP4F3 (arrow) was detected using the purified Pab.