

Datasheet for ABIN652592
anti-CYP4B1 antibody (AA 331-362)[Go to Product page](#)

3 Images

Overview

Quantity:	400 µL
Target:	CYP4B1
Binding Specificity:	AA 331-362
Reactivity:	Human
Host:	Rabbit
Clonality:	Polyclonal
Conjugate:	This CYP4B1 antibody is un-conjugated
Application:	Western Blotting (WB), Immunofluorescence (IF), Immunohistochemistry (Paraffin-embedded Sections) (IHC (p))

Product Details

Immunogen:	This CYP4B1 antibody is generated from rabbits immunized with a KLH conjugated synthetic peptide between 331-362 amino acids from the Central region of human CYP4B1.
Clone:	RB17053
Isotype:	Ig Fraction
Purification:	This antibody is prepared by Saturated Ammonium Sulfate (SAS) precipitation followed by dialysis against PBS.

Target Details

Target:	CYP4B1
Alternative Name:	CYP4B1 (CYP4B1 Products)

Target Details

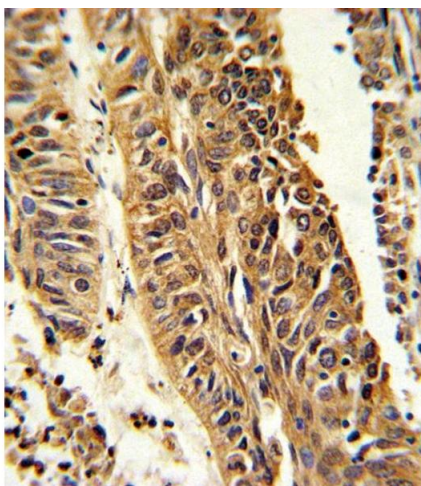
Background:	CYP4B1 is a member of the cytochrome P450 superfamily of enzymes. The cytochrome P450 proteins are monooxygenases which catalyze many reactions involved in drug metabolism and synthesis of cholesterol, steroids and other lipids. This protein localizes to the endoplasmic reticulum. In rodents, the homologous protein has been shown to metabolize certain carcinogens, however, the specific function of the human protein has not been determined.
Molecular Weight:	58991
Gene ID:	1580
NCBI Accession:	NP_000770 , NP_001093242
UniProt:	P13584

Application Details

Application Notes:	IF: 1:10~50. WB: 1:1000. IHC-P: 1:10~50
Restrictions:	For Research Use only

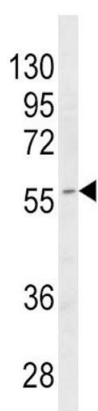
Handling

Format:	Liquid
Buffer:	Purified polyclonal antibody supplied in PBS with 0.09 % (W/V) sodium azide.
Preservative:	Sodium azide
Precaution of Use:	This product contains Sodium azide: a POISONOUS AND HAZARDOUS SUBSTANCE which should be handled by trained staff only.
Storage:	4 °C,-20 °C
Storage Comment:	Maintain refrigerated at 2-8 °C for up to 6 months. For long term storage store at -20 °C in small aliquots to prevent freeze-thaw cycles.
Expiry Date:	6 months



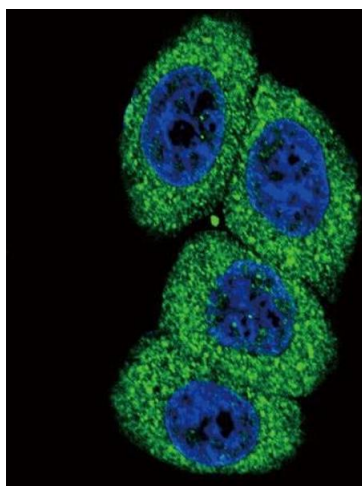
Immunohistochemistry (Paraffin-embedded Sections)

Image 1. Formalin-fixed and paraffin-embedded human lung carcinoma reacted with CYP4B1 Antibody (Center) (ABIN652592 and ABIN2842397), which was peroxidase-conjugated to the secondary antibody, followed by DAB staining. This data demonstrates the use of this antibody for immunohistochemistry, clinical relevance has not been evaluated.



Western Blotting

Image 2. Western blot analysis of CYP4B1 Antibody (Center) (ABIN652592 and ABIN2842397) in MDA-M cell line lysates (35 µg/lane). CYP4B1 (arrow) was detected using the purified Pab.



Immunofluorescence

Image 3. Confocal immunofluorescent analysis of CYP4B1 Antibody (Center) (ABIN652592 and ABIN2842397) with HeLa cell followed by Alexa Fluor 488-conjugated goat anti-rabbit IgG (green). DAPI was used to stain the cell nuclear (blue).