

Datasheet for ABIN652596
anti-TARSL2 antibody (C-Term)[Go to Product page](#)

3 Images

Overview

Quantity:	400 µL
Target:	TARSL2
Binding Specificity:	AA 638-665, C-Term
Reactivity:	Human
Host:	Rabbit
Clonality:	Polyclonal
Conjugate:	This TARSL2 antibody is un-conjugated
Application:	Western Blotting (WB), Flow Cytometry (FACS), Immunohistochemistry (Paraffin-embedded Sections) (IHC (p))

Product Details

Immunogen:	This TARSL2 antibody is generated from rabbits immunized with a KLH conjugated synthetic peptide between 638-665 amino acids from the C-terminal region of human TARSL2.
Clone:	RB19649
Isotype:	Ig Fraction
Purification:	This antibody is purified through a protein A column, followed by peptide affinity purification.

Target Details

Target:	TARSL2
Alternative Name:	TARSL2 (TARSL2 Products)

Target Details

Molecular Weight:	92646
Gene ID:	123283
NCBI Accession:	NP_689547
UniProt:	A2RTX5

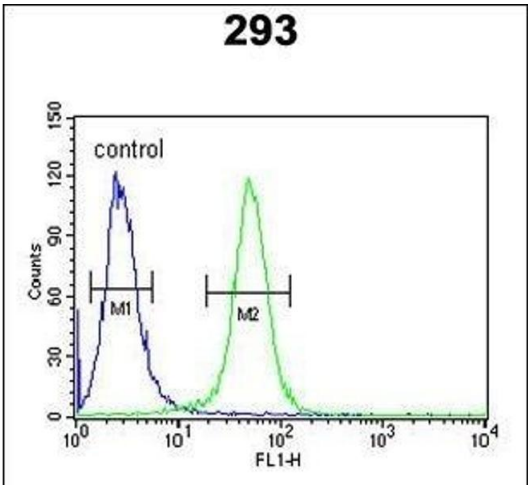
Application Details

Application Notes:	WB: 1:1000. IHC-P: 1:50~100. FC: 1:10~50
Restrictions:	For Research Use only

Handling

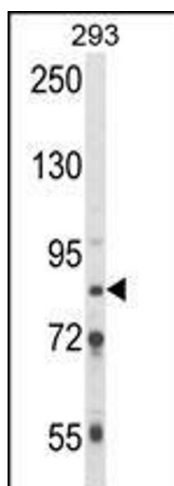
Format:	Liquid
Buffer:	Purified polyclonal antibody supplied in PBS with 0.09 % (W/V) sodium azide.
Preservative:	Sodium azide
Precaution of Use:	This product contains Sodium azide: a POISONOUS AND HAZARDOUS SUBSTANCE which should be handled by trained staff only.
Storage:	4 °C, -20 °C
Storage Comment:	Maintain refrigerated at 2-8 °C for up to 6 months. For long term storage store at -20 °C in small aliquots to prevent freeze-thaw cycles.
Expiry Date:	6 months

Images



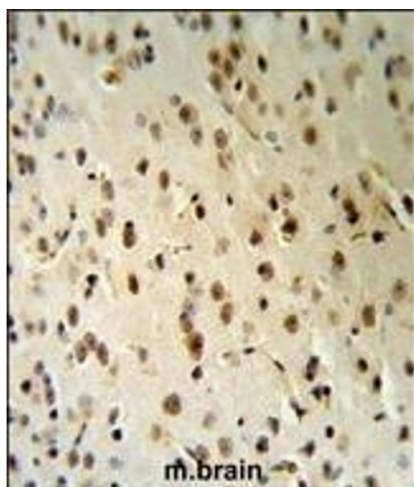
Flow Cytometry

Image 1. TARSL2 Antibody (C-term) (ABIN652596 and ABIN2842400) flow cytometric analysis of 293 cells (right histogram) compared to a negative control cell (left histogram). FITC-conjugated goat-anti-rabbit secondary antibodies were used for the analysis.



Western Blotting

Image 2. Western blot analysis of TARSL2 Antibody (C-term) (ABIN652596 and ABIN2842400) in 293 cell line lysates (35 µg/lane). TARSL2 (arrow) was detected using the purified Pab.



Immunohistochemistry (Paraffin-embedded Sections)

Image 3. TARSL2 Antibody (C-term) (R) IHC analysis in formalin fixed and paraffin embedded human brain tissue followed by peroxidase conjugation of the secondary antibody and DAB staining. This data demonstrates the use of the TARSL2 Antibody (C-term) for immunohistochemistry. Clinical relevance has not been evaluated.