

Datasheet for ABIN652604  
**anti-KMO antibody (AA 155-182)**[Go to Product page](#)

## 4 Images

## Overview

Quantity:	400 µL
Target:	KMO
Binding Specificity:	AA 155-182
Reactivity:	Human, Mouse
Host:	Rabbit
Clonality:	Polyclonal
Conjugate:	This KMO antibody is un-conjugated
Application:	Western Blotting (WB), Flow Cytometry (FACS), Immunohistochemistry (Paraffin-embedded Sections) (IHC (p))

## Product Details

Immunogen:	This KMO antibody is generated from rabbits immunized with a KLH conjugated synthetic peptide between 155-182 amino acids from the Central region of human KMO.
Clone:	RB21124
Isotype:	Ig Fraction
Purification:	This antibody is purified through a protein A column, followed by peptide affinity purification.

## Target Details

Target:	KMO
Alternative Name:	KMO ( <a href="#">KMO Products</a> )

## Target Details

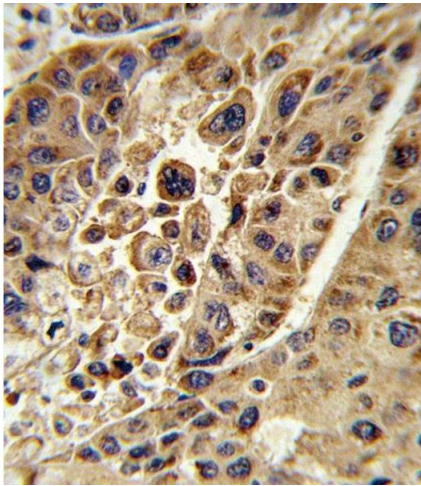
Background:	Kynurenine 3-monooxygenase (KMO, EC 1.14.13.9) is an NADPH-dependent flavin monooxygenase that catalyzes the hydroxylation of the L-tryptophan metabolite L-kynurenine to form L-3-hydroxykynurenine.
Molecular Weight:	55810
Gene ID:	8564
NCBI Accession:	<a href="#">NP_003670</a>
UniProt:	<a href="#">O15229</a>

## Application Details

Application Notes:	WB: 1:2000. WB: 1:1000. IHC-P: 1:10~50. FC: 1:10~50
Restrictions:	For Research Use only

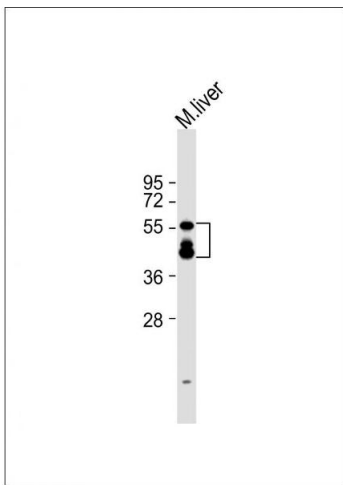
## Handling

Format:	Liquid
Buffer:	Purified polyclonal antibody supplied in PBS with 0.09 % (W/V) sodium azide.
Preservative:	Sodium azide
Precaution of Use:	This product contains Sodium azide: a POISONOUS AND HAZARDOUS SUBSTANCE which should be handled by trained staff only.
Storage:	4 °C, -20 °C
Storage Comment:	Maintain refrigerated at 2-8 °C for up to 6 months. For long term storage store at -20 °C in small aliquots to prevent freeze-thaw cycles.
Expiry Date:	6 months



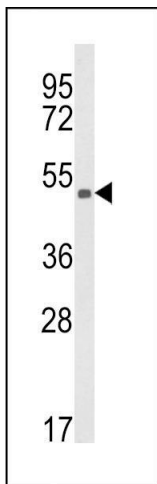
#### Immunohistochemistry (Paraffin-embedded Sections)

**Image 1.** Formalin-fixed and paraffin-embedded human hepatocarcinoma reacted with KMO Antibody (Center), which was peroxidase-conjugated to the secondary antibody, followed by DAB staining. This data demonstrates the use of this antibody for immunohistochemistry, clinical relevance has not been evaluated.



#### Western Blotting

**Image 2.** Anti-KMO Antibody (Center) at 1:2000 dilution + mouse liver lysate Lysates/proteins at 20 µg per lane. Secondary Goat Anti-Rabbit IgG, (H+L), Peroxidase conjugated at 1/10000 dilution. Predicted band size : 56 kDa Blocking/Dilution buffer: 5 % NFDm/TBST.



#### Western Blotting

**Image 3.** Western blot analysis of KMO Antibody (Center) (ABIN652604 and ABIN2842406) in CEM cell line lysates (35 µg/lane). KMO (arrow) was detected using the purified Pab.

Please check the [product details page](#) for more images. Overall 4 images are available for ABIN652604.