



[Go to Product page](#)

Datasheet for ABIN652610

anti-Desmocollin 1 antibody (C-Term)

2 Images

Overview

Quantity:	400 µL
Target:	Desmocollin 1 (DSC1)
Binding Specificity:	AA 659-687, C-Term
Reactivity:	Human
Host:	Rabbit
Clonality:	Polyclonal
Conjugate:	This Desmocollin 1 antibody is un-conjugated
Application:	Western Blotting (WB), Flow Cytometry (FACS)

Product Details

Immunogen:	This DSC1 antibody is generated from rabbits immunized with a KLH conjugated synthetic peptide between 659-687 amino acids from the C-terminal region of human DSC1.
Clone:	RB21405
Isotype:	Ig Fraction
Purification:	This antibody is purified through a protein A column, followed by peptide affinity purification.

Target Details

Target:	Desmocollin 1 (DSC1)
Alternative Name:	DSC1 (DSC1 Products)
Background:	DSC1 is a calcium-dependent glycoprotein that is a member of the desmocollin subfamily of

Target Details

the cadherin superfamily. These desmosomal family members, along with the desmogleins, are found primarily in epithelial cells where they constitute the adhesive proteins of the desmosome cell-cell junction and are required for cell adhesion and desmosome formation. The desmosomal family members are arranged in two clusters on chromosome 18, occupying less than 650 kb combined.

Molecular Weight: 99987

Gene ID: 1823

NCBI Accession: [NP_004939](#), [NP_077739](#)

UniProt: [Q08554](#)

Application Details

Application Notes: WB: 1:1000. FC: 1:10~50

Restrictions: For Research Use only

Handling

Format: Liquid

Buffer: Purified polyclonal antibody supplied in PBS with 0.09 % (W/V) sodium azide.

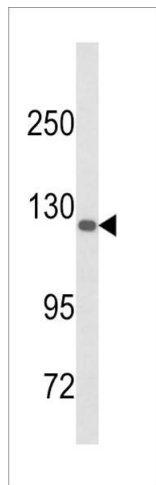
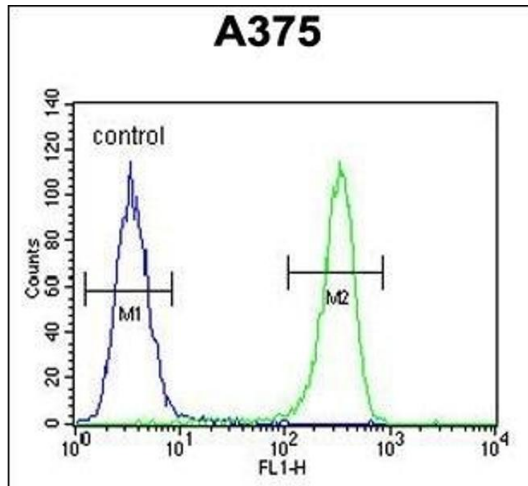
Preservative: Sodium azide

Precaution of Use: This product contains Sodium azide: a POISONOUS AND HAZARDOUS SUBSTANCE which should be handled by trained staff only.

Storage: 4 °C,-20 °C

Storage Comment: Maintain refrigerated at 2-8 °C for up to 6 months. For long term storage store at -20 °C in small aliquots to prevent freeze-thaw cycles.

Expiry Date: 6 months



Flow Cytometry

Image 1. DSC1 Antibody (C-term) (ABIN652610 and ABIN2842408) flow cytometric analysis of cells (right histogram) compared to a negative control cell (left histogram). FITC-conjugated goat-anti-rabbit secondary antibodies were used for the analysis.

Western Blotting

Image 2. Western blot analysis of DSC1 Antibody (C-term) (ABIN652610 and ABIN2842408) in cell line lysates (35 μ g/lane). DSC1 (arrow) was detected using the purified Pab.