

Datasheet for ABIN652612

**anti-Cbl Proto-Oncogene B, E3 Ubiquitin Protein Ligase (CBLB)
(AA 103-130) antibody**[Go to Product page](#)**3** Images

Overview

Quantity:	400 µL
Target:	Cbl Proto-Oncogene B, E3 Ubiquitin Protein Ligase (CBLB)
Binding Specificity:	AA 103-130
Reactivity:	Rat
Host:	Rabbit
Clonality:	Polyclonal
Conjugate:	Un-conjugated
Application:	Western Blotting (WB), Immunohistochemistry (Paraffin-embedded Sections) (IHC (p)), Flow Cytometry (FACS)

Product Details

Immunogen:	This CBLB antibody is generated from rabbits immunized with a KLH conjugated synthetic peptide between 103-130 amino acids from the Central region of human CBLB.
Clone:	RB21574
Isotype:	IgG
Predicted Reactivity:	X, M
Purification:	This antibody is purified through a protein A column, followed by peptide affinity purification.

Target Details

Target:	Cbl Proto-Oncogene B, E3 Ubiquitin Protein Ligase (CBLB)
---------	--

Target Details

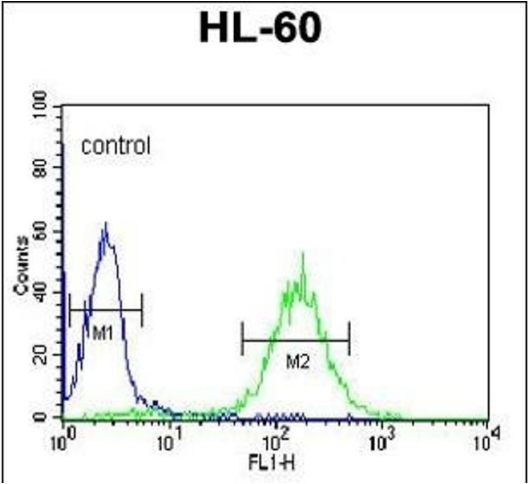
Alternative Name:	CBLB (CBLB Products)
Background:	E3 ubiquitin-protein ligase which accepts ubiquitin from specific E2 ubiquitin-conjugating enzymes, and transfers it to substrates, generally promoting their degradation by the proteasome. Negatively regulates TCR (T-cell receptor), BCR (B-cell receptor) and FCER1 (high affinity immunoglobulin epsilon receptor) signal transduction pathways. In naive T-cells, inhibits VAV1 activation upon TCR engagement and imposes a requirement for CD28 costimulation for proliferation and IL-2 production. It also acts by promoting PIK3R1/p85 ubiquitination, which impairs its recruitment to the TCR and subsequent activation. In activated T-cells, inhibits PLCG1 activation and calcium mobilization upon restimulation and promotes anergy. In B-cells, acts by ubiquitinating SYK and promoting its proteasomal degradation. It may also be involved in EGFR ubiquitination and internalization.
Molecular Weight:	109450
Gene ID:	868
NCBI Accession:	NP_733762
UniProt:	Q13191

Application Details

Application Notes:	WB: 1:1000. IHC-P: 1:50~100. FC: 1:10~50
Restrictions:	For Research Use only

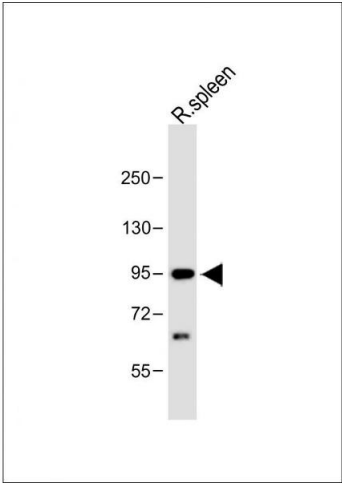
Handling

Format:	Liquid
Buffer:	Purified polyclonal antibody supplied in PBS with 0.09 % (W/V) sodium azide.
Preservative:	Sodium azide
Precaution of Use:	This product contains Sodium azide: a POISONOUS AND HAZARDOUS SUBSTANCE which should be handled by trained staff only.
Storage:	4 °C,-20 °C
Storage Comment:	Maintain refrigerated at 2-8 °C for up to 6 months. For long term storage store at -20 °C in small aliquots to prevent freeze-thaw cycles.
Expiry Date:	6 months



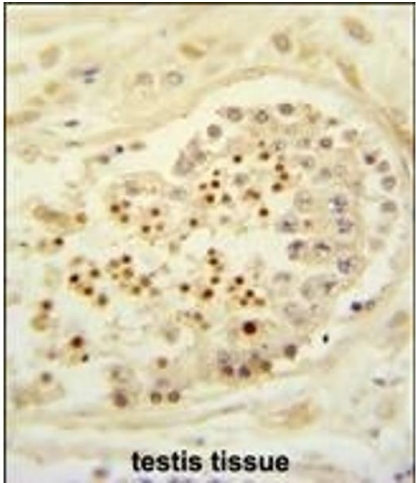
Flow Cytometry

Image 1. CBLB Antibody (Center) (ABIN652612 and ABIN2842410) flow cytometric analysis of HL-60 cells (right histogram) compared to a negative control-Rabbit IgG Isotype Control (left histogram).FITC-conjugated goat-anti-rabbit secondary antibodies were used for the analysis.



Western Blotting

Image 2. Anti-CBLB Antibody (Center) at 1:1000 dilution + Rat spleen whole tissue lysate Lysates/proteins at 20 µg per lane. Secondary Goat Anti-Rabbit IgG, (H+L), Peroxidase conjugated at 1/10000 dilution. Predicted band size : 109 kDa Blocking/Dilution buffer: 5 % NFDM/TBST.



Immunohistochemistry (Paraffin-embedded Sections)

Image 3. Formalin-fixed and paraffin-embedded human testis tissue reacted with CBLB Antibody (Center), which was peroxidase-conjugated to the secondary antibody, followed by DAB staining. This data demonstrates the use of this antibody for immunohistochemistry, clinical relevance has not been evaluated.