

Datasheet for ABIN652616

**anti-Integrin beta 3 antibody (C-Term)****3** Images[Go to Product page](#)

## Overview

Quantity:	400 µL
Target:	Integrin beta 3 (ITGB3)
Binding Specificity:	AA 734-760, C-Term
Reactivity:	Human
Host:	Rabbit
Clonality:	Polyclonal
Conjugate:	This Integrin beta 3 antibody is un-conjugated
Application:	Western Blotting (WB), Flow Cytometry (FACS), Immunohistochemistry (Paraffin-embedded Sections) (IHC (p))

## Product Details

Immunogen:	This ITGB3 antibody is generated from rabbits immunized with a KLH conjugated synthetic peptide between 734-760 amino acids from the C-terminal region of human ITGB3.
Clone:	RB21883
Isotype:	Ig Fraction
Predicted Reactivity:	M, Rat
Purification:	This antibody is purified through a protein A column, followed by peptide affinity purification.

## Target Details

Target:	Integrin beta 3 (ITGB3)
---------	-------------------------

## Target Details

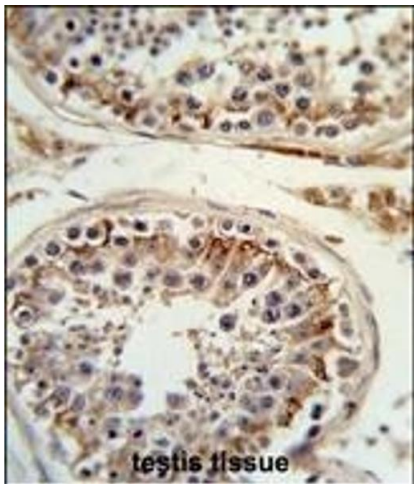
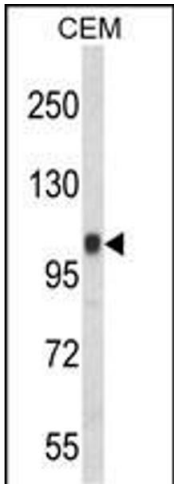
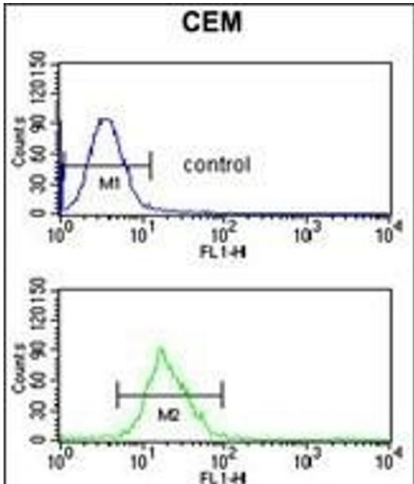
Alternative Name:	ITGB3 ( <a href="#">ITGB3 Products</a> )
Background:	ITGB3 is the integrin beta chain beta 3. Integrins are integral cell-surface proteins composed of an alpha chain and a beta chain. A given chain may combine with multiple partners resulting in different integrins. Integrin beta 3 is found along with the alpha IIb chain in platelets. Integrins are known to participate in cell adhesion as well as cell-surface mediated signalling.
Molecular Weight:	87058
Gene ID:	3690
NCBI Accession:	<a href="#">NP_000203</a>
UniProt:	<a href="#">P05106</a>
Pathways:	<a href="#">Regulation of G-Protein Coupled Receptor Protein Signaling</a> , <a href="#">Signaling Events mediated by VEGFR1 and VEGFR2</a> , <a href="#">Smooth Muscle Cell Migration</a> , <a href="#">Integrin Complex</a>

## Application Details

Application Notes:	WB: 1:1000. IHC-P: 1:50~100. FC: 1:10~50
Restrictions:	For Research Use only

## Handling

Format:	Liquid
Buffer:	Purified polyclonal antibody supplied in PBS with 0.09 % (W/V) sodium azide.
Preservative:	Sodium azide
Precaution of Use:	This product contains Sodium azide: a POISONOUS AND HAZARDOUS SUBSTANCE which should be handled by trained staff only.
Storage:	4 °C,-20 °C
Storage Comment:	Maintain refrigerated at 2-8 °C for up to 6 months. For long term storage store at -20 °C in small aliquots to prevent freeze-thaw cycles.
Expiry Date:	6 months



### Flow Cytometry

**Image 1.** ITGB3 Antibody (C-term) (ABIN652616 and ABIN2842411) flow cytometric analysis of CEM cells (bottom histogram) compared to a negative control cell (top histogram). FITC-conjugated goat-anti-rabbit secondary antibodies were used for the analysis.

### Western Blotting

**Image 2.** Western blot analysis of ITGB3 Antibody (C-term) (ABIN652616 and ABIN2842411) in CEM cell line lysates (35 µg/lane). ITGB3 (arrow) was detected using the purified Pab. (2 µg/mL)

### Immunohistochemistry (Paraffin-embedded Sections)

**Image 3.** Formalin-fixed and paraffin-embedded human testis tissue reacted with ITGB3 Antibody (C-term), which was peroxidase-conjugated to the secondary antibody, followed by DAB staining. This data demonstrates the use of this antibody for immunohistochemistry, clinical relevance has not been evaluated.