



Datasheet for ABIN652617
anti-KIR3DS1 antibody (C-Term)



[Go to Product page](#)

2 Images

Overview

Quantity:	400 µL
Target:	KIR3DS1
Binding Specificity:	AA 361-387, C-Term
Reactivity:	Human
Host:	Rabbit
Clonality:	Polyclonal
Conjugate:	This KIR3DS1 antibody is un-conjugated
Application:	Western Blotting (WB), Flow Cytometry (FACS)

Product Details

Immunogen:	This KIR3DS1 antibody is generated from rabbits immunized with a KLH conjugated synthetic peptide between 361-387 amino acids from the C-terminal region of human KIR3DS1.
Clone:	RB21884
Isotype:	Ig Fraction
Purification:	This antibody is purified through a protein A column, followed by peptide affinity purification.

Target Details

Target:	KIR3DS1
Alternative Name:	KIR3DS1 (KIR3DS1 Products)
Background:	KIR3DS1 is the receptor on natural killer (NK) cells for HLA-C alleles. It does not inhibit the

Target Details

activity of NK cells.

Molecular Weight: 42475

Gene ID: 3813

NCBI Accession: [NP_001077008](#), [NP_001269099](#), [NP_001269100](#)

UniProt: [Q14943](#)

Application Details

Application Notes: WB: 1:1000. FC: 1:10~50

Restrictions: For Research Use only

Handling

Format: Liquid

Buffer: Purified polyclonal antibody supplied in PBS with 0.09 % (W/V) sodium azide.

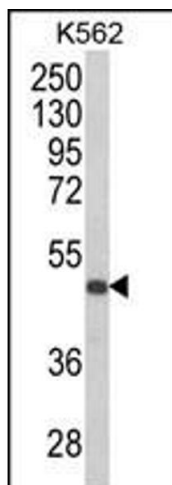
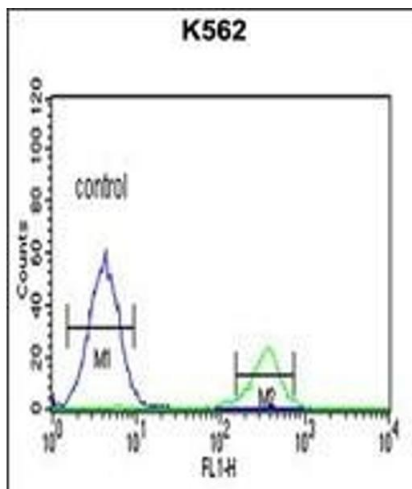
Preservative: Sodium azide

Precaution of Use: This product contains Sodium azide: a POISONOUS AND HAZARDOUS SUBSTANCE which should be handled by trained staff only.

Storage: 4 °C,-20 °C

Storage Comment: Maintain refrigerated at 2-8 °C for up to 6 months. For long term storage store at -20 °C in small aliquots to prevent freeze-thaw cycles.

Expiry Date: 6 months



Flow Cytometry

Image 1. KIR3DS1 Antibody (C-term) (ABIN652617 and ABIN2842412) flow cytometric analysis of K562 cells (right histogram) compared to a negative control cell (left histogram). FITC-conjugated goat-anti-rabbit secondary antibodies were used for the analysis.

Western Blotting

Image 2. Western blot analysis of KIR3DS1 Antibody (C-term) (ABIN652617 and ABIN2842412) in K562 cell line lysates (35 µg/lane). KIR3DS1 (arrow) was detected using the purified Pab.