

Datasheet for ABIN652622
anti-PARD3 antibody (C-Term)[Go to Product page](#)

3 Images

Overview

Quantity:	400 µL
Target:	PARD3
Binding Specificity:	AA 1329-1356, C-Term
Reactivity:	Human, Mouse
Host:	Rabbit
Clonality:	Polyclonal
Conjugate:	This PARD3 antibody is un-conjugated
Application:	Western Blotting (WB), Immunohistochemistry (Paraffin-embedded Sections) (IHC (p)), Flow Cytometry (FACS)

Product Details

Immunogen:	This PARD3 antibody is generated from rabbits immunized with a KLH conjugated synthetic peptide between 1329-1356 amino acids from the C-terminal region of human PARD3.
Clone:	RB21955
Isotype:	Ig Fraction
Predicted Reactivity:	Rat
Purification:	This antibody is purified through a protein A column, followed by peptide affinity purification.

Target Details

Target:	PARD3
---------	-------

Target Details

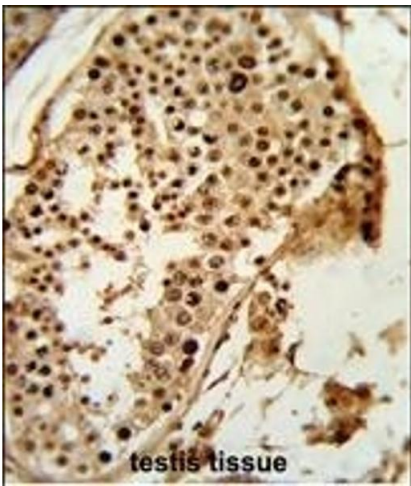
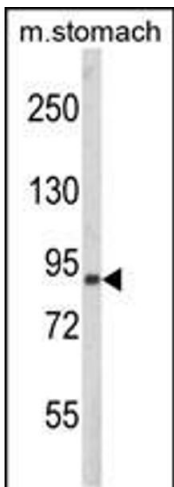
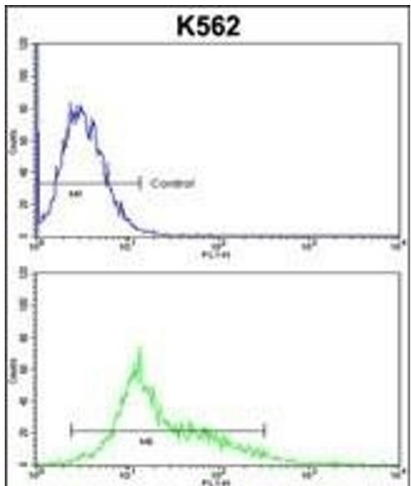
Alternative Name:	PARD3 (PARD3 Products)
Background:	PARD proteins, which were first identified in <i>C. elegans</i> , are essential for asymmetric cell division and polarized growth, whereas CDC42 (MIM 116952) mediates the establishment of cell polarity. The CDC42 GTPase, which is controlled by nucleotide exchange factors (GEFs, see MIM 606057) and GTPase-activating proteins (GAPs, see MIM 604980), interacts with a large set of effector proteins that typically contain a CDC42/RAC (MIM 602048)-interactive binding (CRIB) domain.
Molecular Weight:	151423
Gene ID:	56288
NCBI Accession:	NP_001171714 , NP_001171715 , NP_001171716 , NP_001171717 , NP_001171718 , NP_001171719 , NP_001171720 , NP_001171721 , NP_001171722 , NP_001171723 , NP_062565
UniProt:	Q8TEW0
Pathways:	Cell-Cell Junction Organization

Application Details

Application Notes:	WB: 1:1000. IHC-P: 1:50~100. FC: 1:10~50
Restrictions:	For Research Use only

Handling

Format:	Liquid
Buffer:	Purified polyclonal antibody supplied in PBS with 0.09 % (W/V) sodium azide.
Preservative:	Sodium azide
Precaution of Use:	This product contains Sodium azide: a POISONOUS AND HAZARDOUS SUBSTANCE which should be handled by trained staff only.
Storage:	4 °C, -20 °C
Storage Comment:	Maintain refrigerated at 2-8 °C for up to 6 months. For long term storage store at -20 °C in small aliquots to prevent freeze-thaw cycles.
Expiry Date:	6 months



Flow Cytometry

Image 1. RD3 Antibody (C-term) (ABIN652622 and ABIN2842415) flow cytometric analysis of k562 cells (bottom histogram) compared to a negative control cell (top histogram). FITC-conjugated goat-anti-rabbit secondary antibodies were used for the analysis.

Western Blotting

Image 2. Western blot analysis of RD3 Antibody (C-term) (ABIN652622 and ABIN2842415) in mouse stomach tissue lysates (35 µg/lane). RD3 (arrow) was detected using the purified b.

Immunohistochemistry (Paraffin-embedded Sections)

Image 3. Formalin-fixed and paraffin-embedded human testis tissue reacted with RD3 Antibody (C-term), which was peroxidase-conjugated to the secondary antibody, followed by DAB staining. This data demonstrates the use of this antibody for immunohistochemistry, clinical relevance has not been evaluated.