

Datasheet for ABIN652625
anti-ATF6 antibody (AA 350-377)

4 Images

1 Publication

[Go to Product page](#)

Overview

Quantity:	400 µL
Target:	ATF6
Binding Specificity:	AA 350-377
Reactivity:	Human
Host:	Rabbit
Clonality:	Polyclonal
Conjugate:	This ATF6 antibody is un-conjugated
Application:	Western Blotting (WB), Immunohistochemistry (Paraffin-embedded Sections) (IHC (p)), Flow Cytometry (FACS)

Product Details

Immunogen:	This ATF6 antibody is generated from rabbits immunized with a KLH conjugated synthetic peptide between 350-377 amino acids of human ATF6.
Clone:	RB22035
Isotype:	IgG
Predicted Reactivity:	M, Rat
Purification:	This antibody is purified through a protein A column, followed by peptide affinity purification.

Target Details

Target:	ATF6
---------	------

Target Details

Alternative Name:	ATF6 (ATF6 Products)
Background:	ATF6 is an endoplasmic reticulum (ER) stress-regulated transmembrane transcription factor that activates the transcription of ER molecules.
Molecular Weight:	74585
Gene ID:	22926
NCBI Accession:	NP_031374
UniProt:	P18850
Pathways:	ER-Nucleus Signaling , Unfolded Protein Response

Application Details

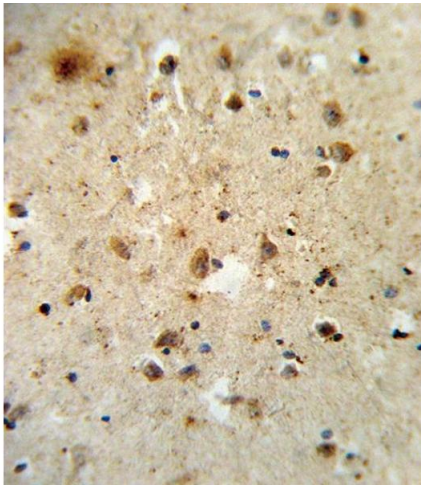
Application Notes:	WB: 1:1000. WB: 1:16000. IHC-P: 1:10~50. FC: 1:10~50
Restrictions:	For Research Use only

Handling

Format:	Liquid
Buffer:	Purified polyclonal antibody supplied in PBS with 0.09 % (W/V) sodium azide.
Preservative:	Sodium azide
Precaution of Use:	This product contains Sodium azide: a POISONOUS AND HAZARDOUS SUBSTANCE which should be handled by trained staff only.
Storage:	4 °C,-20 °C
Storage Comment:	Maintain refrigerated at 2-8 °C for up to 6 months. For long term storage store at -20 °C in small aliquots to prevent freeze-thaw cycles.
Expiry Date:	6 months

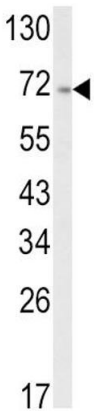
Publications

Product cited in:	Zhang, Liu, Xu, Sun, Gong, Shao: "Neferine, an alkaloid ingredient in lotus seed embryo, inhibits proliferation of human osteosarcoma cells by promoting p38 MAPK-mediated p21 stabilization." " in: European journal of pharmacology , Vol. 677, Issue 1-3, pp. 47-54, (2012) (PubMed).
-------------------	--



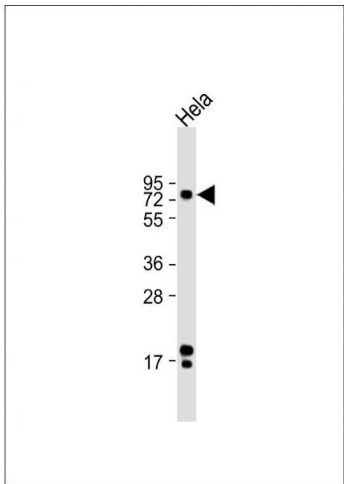
Immunohistochemistry (Paraffin-embedded Sections)

Image 1. Formalin-fixed and paraffin-embedded human brain tissue reacted with ATF6 Antibody (Center), which was peroxidase-conjugated to the secondary antibody, followed by DAB staining. This data demonstrates the use of this antibody for immunohistochemistry, clinical relevance has not been evaluated.



Western Blotting

Image 2. Western blot analysis of ATF6 Antibody (Center) (ABIN652625 and ABIN2842417) in cell line lysates (35 μ g/lane). ATF6 (arrow) was detected using the purified Pab.



Western Blotting

Image 3. Anti-ATF6 Antibody (Center) at 1:16000 dilution + HeLa whole cell lysate Lysates/proteins at 20 μ g per lane. Secondary Goat Anti-Rabbit IgG, (H+L), Peroxidase conjugated at 1/10000 dilution. Predicted band size : 75 kDa Blocking/Dilution buffer: 5 % NFDM/TBST.

Please check the [product details page](#) for more images. Overall 4 images are available for ABIN652625.