

Datasheet for ABIN652631
anti-ATP12A antibody (AA 833-859)[Go to Product page](#)

3 Images

Overview

Quantity:	400 µL
Target:	ATP12A
Binding Specificity:	AA 833-859
Reactivity:	Human
Host:	Rabbit
Clonality:	Polyclonal
Conjugate:	This ATP12A antibody is un-conjugated
Application:	Western Blotting (WB), Flow Cytometry (FACS), Immunohistochemistry (Paraffin-embedded Sections) (IHC (p))

Product Details

Immunogen:	This ATP12A antibody is generated from rabbits immunized with a KLH conjugated synthetic peptide between 833-859 amino acids from the Central region of human ATP12A.
Clone:	RB22581
Isotype:	Ig Fraction
Purification:	This antibody is purified through a protein A column, followed by peptide affinity purification.

Target Details

Target:	ATP12A
Alternative Name:	ATP12A (ATP12A Products)

Target Details

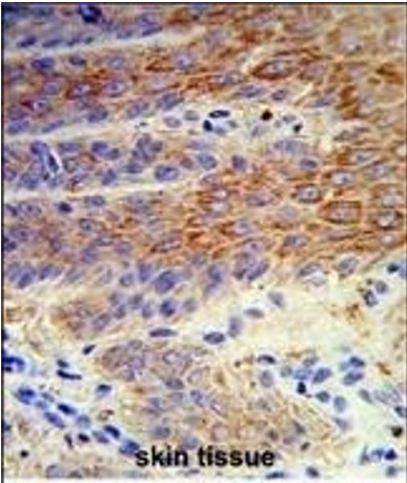
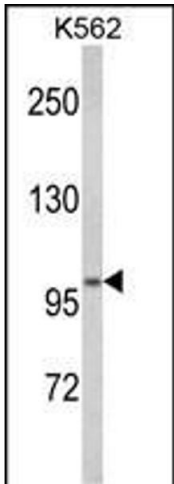
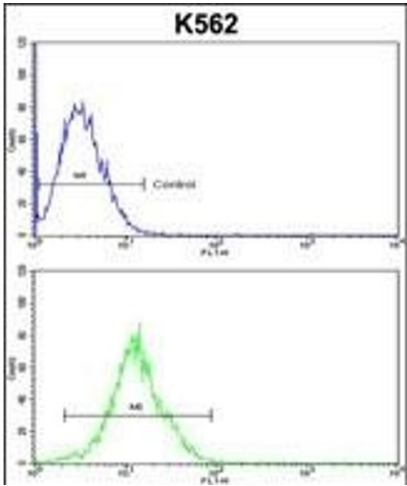
Background:	ATP12A belongs to the family of P-type cation transport ATPases. This protein is a catalytic subunit of the ouabain-sensitive H ⁺ /K ⁺ -ATPase that catalyzes the hydrolysis of ATP coupled with the exchange of H(+) and K(+) ions across the plasma membrane. It is also responsible for potassium absorption in various tissues.
Molecular Weight:	115511
Gene ID:	479
NCBI Accession:	NP_001172014 , NP_001667
UniProt:	P54707
Pathways:	Proton Transport , Ribonucleoside Biosynthetic Process

Application Details

Application Notes:	WB: 1:1000. IHC-P: 1:50~100. FC: 1:10~50
Restrictions:	For Research Use only

Handling

Format:	Liquid
Buffer:	Purified polyclonal antibody supplied in PBS with 0.09 % (W/V) sodium azide.
Preservative:	Sodium azide
Precaution of Use:	This product contains Sodium azide: a POISONOUS AND HAZARDOUS SUBSTANCE which should be handled by trained staff only.
Storage:	4 °C,-20 °C
Storage Comment:	Maintain refrigerated at 2-8 °C for up to 6 months. For long term storage store at -20 °C in small aliquots to prevent freeze-thaw cycles.
Expiry Date:	6 months



Flow Cytometry

Image 1. ATP12A Antibody (Center) (ABIN652631 and ABIN2842421) flow cytometric analysis of k562 cells (bottom histogram) compared to a negative control cell (top histogram). FITC-conjugated goat-anti-rabbit secondary antibodies were used for the analysis.

Western Blotting

Image 2. Western blot analysis of ATP12A Antibody (Center) (ABIN652631 and ABIN2842421) in K562 cell line lysates (35 µg/lane). ATP12A (arrow) was detected using the purified Pab.

Immunohistochemistry (Paraffin-embedded Sections)

Image 3. Formalin-fixed and paraffin-embedded human skin reacted with ATP12A Antibody (Center), which was peroxidase-conjugated to the secondary antibody, followed by DAB staining. This data demonstrates the use of this antibody for immunohistochemistry, clinical relevance has not been evaluated.