

Datasheet for ABIN652632  
**anti-MARC2 antibody (C-Term)**

## 4 Images

[Go to Product page](#)

## Overview

Quantity:	400 µL
Target:	MARC2
Binding Specificity:	AA 270-300, C-Term
Reactivity:	Human
Host:	Rabbit
Clonality:	Polyclonal
Conjugate:	This MARC2 antibody is un-conjugated
Application:	Western Blotting (WB), Immunohistochemistry (Paraffin-embedded Sections) (IHC (p)), Flow Cytometry (FACS)

## Product Details

Immunogen:	This MOSC2 antibody is generated from rabbits immunized with a KLH conjugated synthetic peptide between 270-300 amino acids from the C-terminal region of human MOSC2.
Clone:	RB22590
Isotype:	Ig Fraction
Purification:	This antibody is purified through a protein A column, followed by peptide affinity purification.

## Target Details

Target:	MARC2
Alternative Name:	MOSC2 ( <a href="#">MARC2 Products</a> )

## Target Details

**Background:** Catalytic component of the benzamidoxime prodrug-converting complex, a complex required to reduce N-hydroxylated structures, such as benzamidoxime prodrug. Benzamidoxime is an amidine prodrug produced by N-hydroxylation which is used to enhance bioavailability and increase intestinal absorption. It is then reduced into benzamidine, its active amidine, by the benzamidoxime prodrug-converting complex.

**Molecular Weight:** 38023

**Gene ID:** 54996

**NCBI Accession:** [NP\\_060368](#)

**UniProt:** [Q969Z3](#)

## Application Details

**Application Notes:** WB: 1:1000. WB: 1:1000. IHC-P: 1:50~100. FC: 1:10~50

**Restrictions:** For Research Use only

## Handling

**Format:** Liquid

**Buffer:** Purified polyclonal antibody supplied in PBS with 0.09 % (W/V) sodium azide.

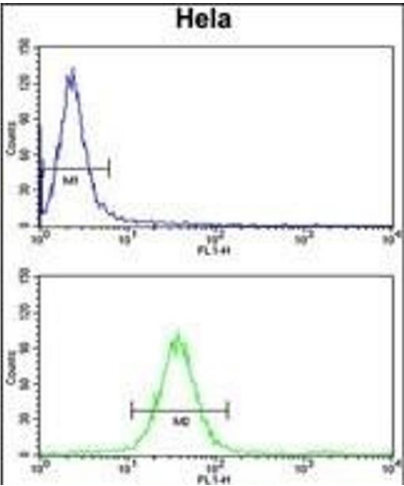
**Preservative:** Sodium azide

**Precaution of Use:** This product contains Sodium azide: a POISONOUS AND HAZARDOUS SUBSTANCE which should be handled by trained staff only.

**Storage:** 4 °C,-20 °C

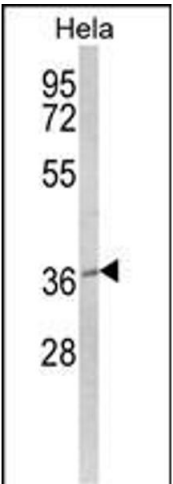
**Storage Comment:** Maintain refrigerated at 2-8 °C for up to 6 months. For long term storage store at -20 °C in small aliquots to prevent freeze-thaw cycles.

**Expiry Date:** 6 months



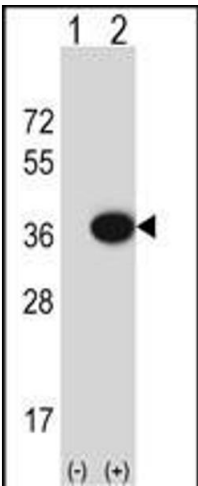
### Flow Cytometry

**Image 1.** MOSC2 Antibody (C-term) (ABIN652632 and ABIN2842422) flow cytometry analysis of HeLa cells (bottom histogram) compared to a negative control cell (top histogram). FITC-conjugated goat-anti-rabbit secondary antibodies were used for the analysis.



### Western Blotting

**Image 2.** Western blot analysis of MOSC2 Antibody (C-term) (ABIN652632 and ABIN2842422) in HeLa cell line lysates (35 µg/lane). MOSC2 (arrow) was detected using the purified Pab.



### Western Blotting

**Image 3.** Western blot analysis of MOSC2 (arrow) using rabbit polyclonal MOSC2 Antibody (C-term) (ABIN652632 and ABIN2842422). 293 cell lysates (2 µg/lane) either nontransfected (Lane 1) or transiently transfected (Lane 2) with the MOSC2 gene.

Please check the [product details page](#) for more images. Overall 4 images are available for ABIN652632.