

Datasheet for ABIN652635
anti-NIP7 antibody (C-Term)[Go to Product page](#)

3 Images

Overview

| | |
|----------------------|--|
| Quantity: | 400 µL |
| Target: | NIP7 |
| Binding Specificity: | AA 150-177, C-Term |
| Reactivity: | Human |
| Host: | Rabbit |
| Clonality: | Polyclonal |
| Conjugate: | This NIP7 antibody is un-conjugated |
| Application: | Western Blotting (WB), Flow Cytometry (FACS) |

Product Details

| | |
|-----------------------|--|
| Immunogen: | This NIP7 antibody is generated from rabbits immunized with a KLH conjugated synthetic peptide between 150-177 amino acids from the C-terminal region of human NIP7. |
| Clone: | RB22644 |
| Isotype: | Ig Fraction |
| Predicted Reactivity: | M, Pig |
| Purification: | This antibody is purified through a protein A column, followed by peptide affinity purification. |

Target Details

| | |
|-------------------|--|
| Target: | NIP7 |
| Alternative Name: | NIP7 (NIP7 Products) |

Target Details

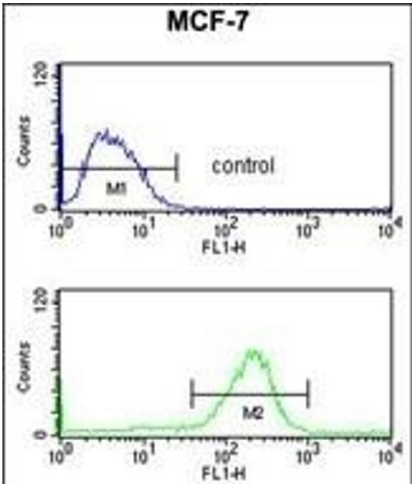
| | |
|-------------------|--|
| Background: | Required for proper 27S pre-rRNA processing and 60S ribosome subunit assembly. |
| Molecular Weight: | 20463 |
| Gene ID: | 51388 |
| NCBI Accession: | NP_001186363 , NP_057185 |
| UniProt: | Q9Y221 |
| Pathways: | Ribonucleoprotein Complex Subunit Organization , Ribosome Assembly |

Application Details

| | |
|--------------------|-------------------------------------|
| Application Notes: | WB: 1:1000. WB: 1:1000. FC: 1:10~50 |
| Restrictions: | For Research Use only |

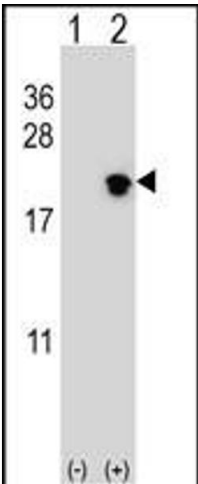
Handling

| | |
|--------------------|--|
| Format: | Liquid |
| Buffer: | Purified polyclonal antibody supplied in PBS with 0.09 % (W/V) sodium azide. |
| Preservative: | Sodium azide |
| Precaution of Use: | This product contains Sodium azide: a POISONOUS AND HAZARDOUS SUBSTANCE which should be handled by trained staff only. |
| Storage: | 4 °C,-20 °C |
| Storage Comment: | Maintain refrigerated at 2-8 °C for up to 6 months. For long term storage store at -20 °C in small aliquots to prevent freeze-thaw cycles. |
| Expiry Date: | 6 months |



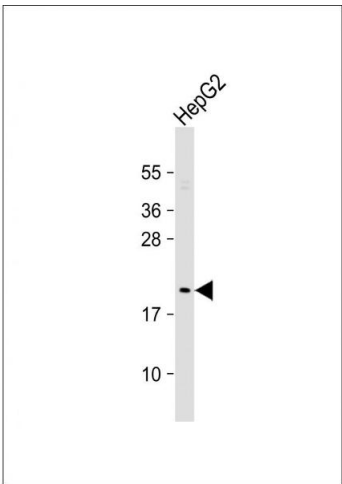
Flow Cytometry

Image 1. NIP7 Antibody (C-term) (ABIN652635 and ABIN2842425) flow cytometry analysis of MCF-7 cells (bottom histogram) compared to a negative control cell (top histogram). FITC-conjugated goat-anti-rabbit secondary antibodies were used for the analysis.



Western Blotting

Image 2. Western blot analysis of NIP7 (arrow) using rabbit polyclonal NIP7 Antibody (C-term) (ABIN652635 and ABIN2842425). 293 cell lysates (2 µg/lane) either nontransfected (Lane 1) or transiently transfected (Lane 2) with the NIP7 gene.



Western Blotting

Image 3. Anti-NIP7 Antibody (C-term) at 1:1000 dilution + HepG2 whole cell lysate Lysates/proteins at 20 µg per lane. Secondary Goat Anti-Rabbit IgG, (H+L), Peroxidase conjugated at 1/10000 dilution. Predicted band size : 20 kDa Blocking/Dilution buffer: 5 % NFDM/TBST.