

Datasheet for ABIN652636
anti-PECI/ECI2 antibody (C-Term)[Go to Product page](#)

4 Images

Overview

Quantity:	400 µL
Target:	PECI/ECI2 (PECI)
Binding Specificity:	AA 331-358, C-Term
Reactivity:	Human
Host:	Rabbit
Clonality:	Polyclonal
Conjugate:	This PECI/ECI2 antibody is un-conjugated
Application:	Western Blotting (WB), Immunohistochemistry (Paraffin-embedded Sections) (IHC (p)), Flow Cytometry (FACS)

Product Details

Immunogen:	This PECI antibody is generated from rabbits immunized with a KLH conjugated synthetic peptide between 331-358 amino acids from the C-terminal region of human PECI.
Clone:	RB22645
Isotype:	Ig Fraction
Purification:	This antibody is purified through a protein A column, followed by peptide affinity purification.

Target Details

Target:	PECI/ECI2 (PECI)
Alternative Name:	PECI (PECI Products)

Target Details

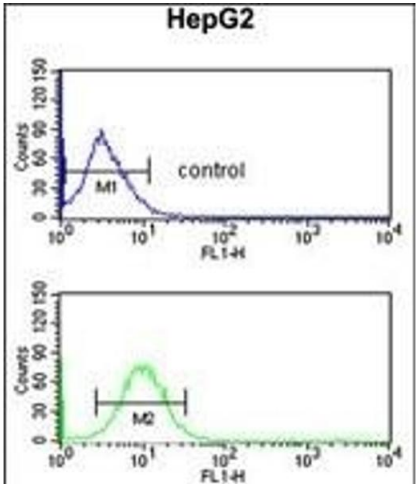
Background:	PECI is an auxiliary enzyme that catalyzes an isomerization step required for the beta-oxidation of unsaturated fatty acids.
Molecular Weight:	43585
Gene ID:	10455
NCBI Accession:	NP_001159482 , NP_006108 , NP_996667
UniProt:	O75521

Application Details

Application Notes:	WB: 1:1000. WB: 1:1000. IHC-P: 1:50~100. FC: 1:10~50
Restrictions:	For Research Use only

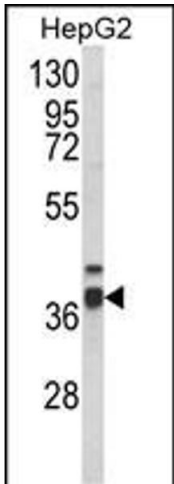
Handling

Format:	Liquid
Buffer:	Purified polyclonal antibody supplied in PBS with 0.09 % (W/V) sodium azide.
Preservative:	Sodium azide
Precaution of Use:	This product contains Sodium azide: a POISONOUS AND HAZARDOUS SUBSTANCE which should be handled by trained staff only.
Storage:	4 °C,-20 °C
Storage Comment:	Maintain refrigerated at 2-8 °C for up to 6 months. For long term storage store at -20 °C in small aliquots to prevent freeze-thaw cycles.
Expiry Date:	6 months



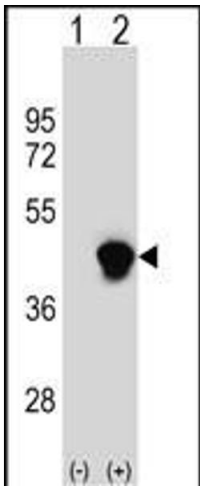
Flow Cytometry

Image 1. Peci Antibody (C-term) (ABIN652636 and ABIN2842426) flow cytometric analysis of HepG2 cells (bottom histogram) compared to a negative control cell (top histogram). FITC-conjugated goat-anti-rabbit secondary antibodies were used for the analysis.



Western Blotting

Image 2. Western blot analysis of Peci Antibody (C-term) (ABIN652636 and ABIN2842426) in HepG2 cell line lysates (35 µg/lane). Peci (arrow) was detected using the purified Pab.



Western Blotting

Image 3. Western blot analysis of Peci (arrow) using rabbit polyclonal Peci Antibody (C-term) (ABIN652636 and ABIN2842426). 293 cell lysates (2 µg/lane) either nontransfected (Lane 1) or transiently transfected (Lane 2) with the Peci gene.

Please check the [product details page](#) for more images. Overall 4 images are available for ABIN652636.