

Datasheet for ABIN652651
anti-ALDH3B1 antibody (AA 334-360)[Go to Product page](#)

4 Images

Overview

Quantity:	400 µL
Target:	ALDH3B1
Binding Specificity:	AA 334-360
Reactivity:	Human
Host:	Rabbit
Clonality:	Polyclonal
Conjugate:	This ALDH3B1 antibody is un-conjugated
Application:	Western Blotting (WB), Immunohistochemistry (Paraffin-embedded Sections) (IHC (p))

Product Details

Immunogen:	This ALDH3B1 antibody is generated from rabbits immunized with a KLH conjugated synthetic peptide between 334-360 amino acids from the Central region of human ALDH3B1.
Clone:	RB22755
Isotype:	Ig Fraction
Predicted Reactivity:	Rat, M
Purification:	This antibody is purified through a protein A column, followed by peptide affinity purification.

Target Details

Target:	ALDH3B1
Alternative Name:	ALDH3B1 (ALDH3B1 Products)

Target Details

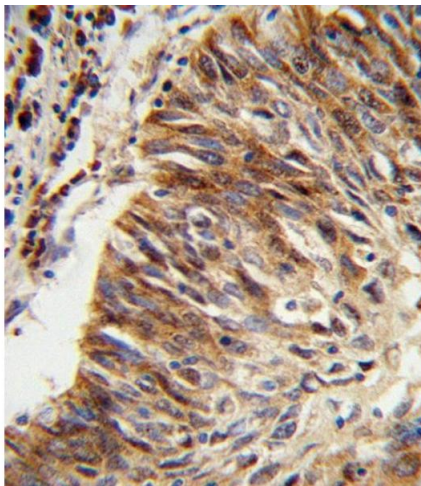
Background:	The aldehyde dehydrogenases are a family of isozymes that may play a major role in the detoxification of aldehydes generated by alcohol metabolism and lipid peroxidation.
Molecular Weight:	51840
Gene ID:	221
NCBI Accession:	NP_000685 , NP_001025181 , NP_001154945
UniProt:	P43353
Pathways:	Monocarboxylic Acid Catabolic Process

Application Details

Application Notes:	WB: 1:1000. WB: 1:1000. WB: 1:1000. IHC-P: 1:10~50
Restrictions:	For Research Use only

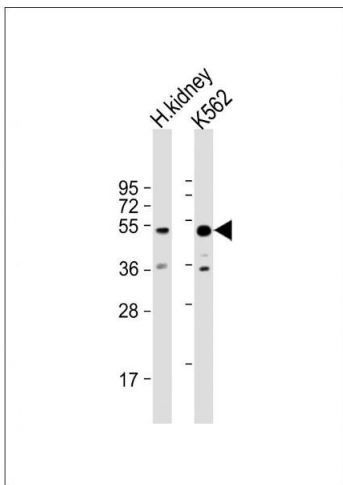
Handling

Format:	Liquid
Buffer:	Purified polyclonal antibody supplied in PBS with 0.09 % (W/V) sodium azide.
Preservative:	Sodium azide
Precaution of Use:	This product contains Sodium azide: a POISONOUS AND HAZARDOUS SUBSTANCE which should be handled by trained staff only.
Storage:	4 °C, -20 °C
Storage Comment:	Maintain refrigerated at 2-8 °C for up to 6 months. For long term storage store at -20 °C in small aliquots to prevent freeze-thaw cycles.
Expiry Date:	6 months



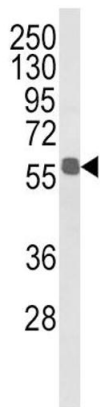
Immunohistochemistry (Paraffin-embedded Sections)

Image 1. Formalin-fixed and paraffin-embedded human lung carcinoma reacted with ALDH3B1 Antibody (Center), which was peroxidase-conjugated to the secondary antibody, followed by DAB staining. This data demonstrates the use of this antibody for immunohistochemistry, clinical relevance has not been evaluated.



Western Blotting

Image 2. All lanes : Anti-ALDH3B1 Antibody (Center) at 1:1000 dilution Lane 1: human kidney lysate Lane 2: K562 whole cell lysate Lysates/proteins at 20 µg per lane. Secondary Goat Anti-Rabbit IgG, (H+L), Peroxidase conjugated at 1/10000 dilution. Predicted band size : 52 kDa Blocking/Dilution buffer: 5 % NFDM/TBST.



Western Blotting

Image 3. Western blot analysis of ALDH3B1 Antibody (Center) (ABIN652651 and ABIN2842437) in MDA-M cell line lysates (35 µg/lane). ALDH3B1 (arrow) was detected using the purified Pab.

Please check the [product details page](#) for more images. Overall 4 images are available for ABIN652651.