



Datasheet for ABIN652652

anti-Der1-Like Domain Family, Member 2 (DERL2) (AA 191-218), (C-Term) antibody



[Go to Product page](#)

3 Images

Overview

Quantity:	400 µL
Target:	Der1-Like Domain Family, Member 2 (DERL2)
Binding Specificity:	AA 191-218, C-Term
Reactivity:	Human
Host:	Rabbit
Clonality:	Polyclonal
Conjugate:	Un-conjugated
Application:	Western Blotting (WB), Immunohistochemistry (Paraffin-embedded Sections) (IHC (p)), Flow Cytometry (FACS)

Product Details

Immunogen:	This DERL2 antibody is generated from rabbits immunized with a KLH conjugated synthetic peptide between 191-218 amino acids from the C-terminal region of human DERL2.
Clone:	RB22771
Isotype:	Ig Fraction
Purification:	This antibody is purified through a protein A column, followed by peptide affinity purification.

Target Details

Target:	Der1-Like Domain Family, Member 2 (DERL2)
Alternative Name:	DERL2 (DERL2 Products)

Target Details

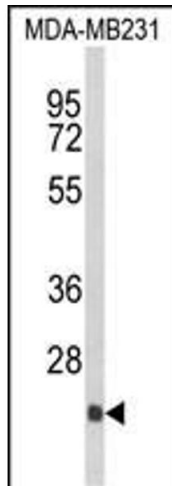
Background:	Proteins that are unfolded or misfolded in the endoplasmic reticulum (ER) must be refolded or degraded to maintain the homeostasis of the ER. DERL2 is involved in the degradation of misfolded glycoproteins in the ER.
Molecular Weight:	27567
Gene ID:	51009
NCBI Accession:	NP_057125
UniProt:	Q9GZP9
Pathways:	ER-Nucleus Signaling , Feeding Behaviour

Application Details

Application Notes:	WB: 1:1000. IHC-P: 1:50~100. FC: 1:10~50
Restrictions:	For Research Use only

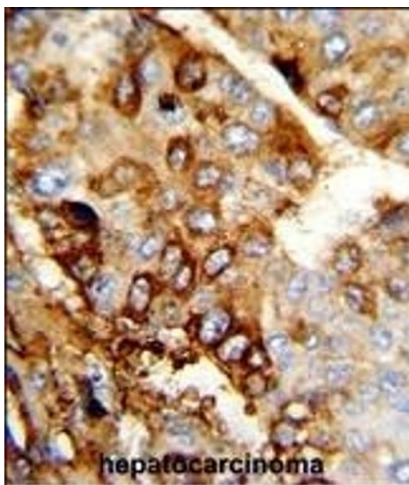
Handling

Format:	Liquid
Buffer:	Purified polyclonal antibody supplied in PBS with 0.09 % (W/V) sodium azide.
Preservative:	Sodium azide
Precaution of Use:	This product contains Sodium azide: a POISONOUS AND HAZARDOUS SUBSTANCE which should be handled by trained staff only.
Storage:	4 °C,-20 °C
Storage Comment:	Maintain refrigerated at 2-8 °C for up to 6 months. For long term storage store at -20 °C in small aliquots to prevent freeze-thaw cycles.
Expiry Date:	6 months



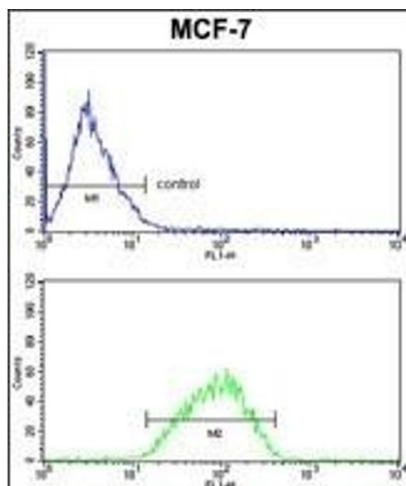
Western Blotting

Image 1. Western blot analysis of DERL2 Antibody (C-term) (ABIN652652 and ABIN2842438) in MDA-M cell line lysates (35 µg/lane). DERL2 (arrow) was detected using the purified Pab.



Immunohistochemistry (Paraffin-embedded Sections)

Image 2. Formalin-fixed and paraffin-embedded human hepatocarcinoma reacted with DERL2 Antibody (C-term), which was peroxidase-conjugated to the secondary antibody, followed by DAB staining. This data demonstrates the use of this antibody for immunohistochemistry, clinical relevance has not been evaluated.



Flow Cytometry

Image 3. DERL2 Antibody (C-term) (ABIN652652 and ABIN2842438) FC analysis of MCF-7 cells (bottom histogram) compared to a negative control cell (top histogram). FITC-conjugated goat-anti-rabbit secondary antibodies were used for the analysis.