

Datasheet for ABIN652665
anti-MC3R antibody (AA 86-112)[Go to Product page](#)

2 Images

Overview

Quantity:	400 µL
Target:	MC3R
Binding Specificity:	AA 86-112
Reactivity:	Human
Host:	Rabbit
Clonality:	Polyclonal
Conjugate:	This MC3R antibody is un-conjugated
Application:	Western Blotting (WB), Flow Cytometry (FACS)

Product Details

Immunogen:	This MC3R antibody is generated from rabbits immunized with a KLH conjugated synthetic peptide between 86-112 amino acids from the Central region of human MC3R.
Clone:	RB22917
Isotype:	Ig Fraction
Purification:	This antibody is purified through a protein A column, followed by peptide affinity purification.

Target Details

Target:	MC3R
Alternative Name:	MC3R (MC3R Products)
Background:	MC3R is a G-protein-coupled receptor for melanocyte-stimulating hormone and

Target Details

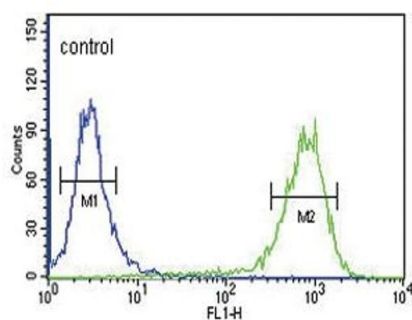
	adrenocorticotrophic hormone that is expressed in tissues other than the adrenal cortex and melanocytes. This gene maps to the same region as the locus for benign neonatal epilepsy.
Molecular Weight:	36043
Gene ID:	4159
NCBI Accession:	NP_063941
UniProt:	P41968
Pathways:	cAMP Metabolic Process

Application Details

Application Notes:	WB: 1:1000. FC: 1:10~50
Restrictions:	For Research Use only

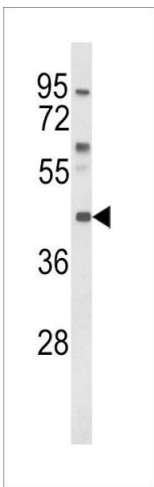
Handling

Format:	Liquid
Buffer:	Purified polyclonal antibody supplied in PBS with 0.09 % (W/V) sodium azide.
Preservative:	Sodium azide
Precaution of Use:	This product contains Sodium azide: a POISONOUS AND HAZARDOUS SUBSTANCE which should be handled by trained staff only.
Storage:	4 °C,-20 °C
Storage Comment:	Maintain refrigerated at 2-8 °C for up to 6 months. For long term storage store at -20 °C in small aliquots to prevent freeze-thaw cycles.
Expiry Date:	6 months



Flow Cytometry

Image 1. MC3R Antibody (Center) (ABIN652665 and ABIN2842446) flow cytometric analysis of K562 cells (right histogram) compared to a negative control cell (left histogram). FITC-conjugated goat-anti-rabbit secondary antibodies were used for the analysis.



Western Blotting

Image 2. Western blot analysis of MC3R Antibody (Center) (ABIN652665 and ABIN2842446) in K562 cell line lysates (35 µg/lane). MC3R (arrow) was detected using the purified Pab.