



Datasheet for ABIN652680
anti-SREBF1 antibody (AA 349-378)



[Go to Product page](#)

4 Images

Overview

| | |
|----------------------|---|
| Quantity: | 400 µL |
| Target: | SREBF1 |
| Binding Specificity: | AA 349-378 |
| Reactivity: | Human |
| Host: | Rabbit |
| Clonality: | Polyclonal |
| Conjugate: | This SREBF1 antibody is un-conjugated |
| Application: | Western Blotting (WB), Immunohistochemistry (Paraffin-embedded Sections) (IHC (p)), Flow Cytometry (FACS) |

Product Details

| | |
|-----------------------|---|
| Immunogen: | This SREBF1 antibody is generated from rabbits immunized with a KLH conjugated synthetic peptide between 349-378 amino acids of human SREBF1. |
| Clone: | RB21265 |
| Isotype: | IgG |
| Predicted Reactivity: | Ha, M, Rat |
| Purification: | This antibody is purified through a protein A column, followed by peptide affinity purification. |

Target Details

| | |
|---------|--------|
| Target: | SREBF1 |
|---------|--------|

Target Details

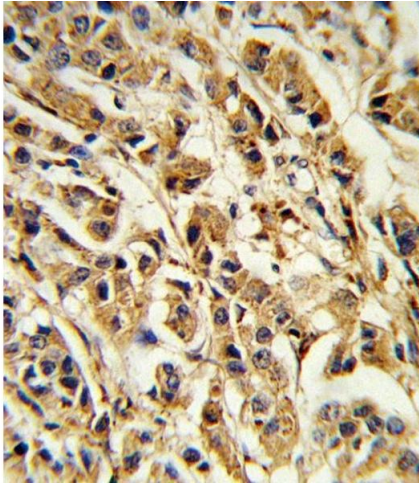
| | |
|-------------------|---|
| Alternative Name: | SREBF1 (SREBF1 Products) |
| Background: | SREBF1 is a transcription factor that binds to the sterol regulatory element-1 (SRE1), which is a decamer flanking the low density lipoprotein receptor gene and some genes involved in sterol biosynthesis. The protein is synthesized as a precursor that is attached to the nuclear membrane and endoplasmic reticulum. Following cleavage, the mature protein translocates to the nucleus and activates transcription by binding to the SRE1. Sterols inhibit the cleavage of the precursor, and the mature nuclear form is rapidly catabolized, thereby reducing transcription. The protein is a member of the basic helix-loop-helix-leucine zipper (bHLH-Zip) transcription factor family. |
| Molecular Weight: | 121675 |
| Gene ID: | 6720 |
| NCBI Accession: | NP_001005291 , NP_004167 |
| UniProt: | P36956 |
| Pathways: | AMPK Signaling , Caspase Cascade in Apoptosis , Negative Regulation of Hormone Secretion , Regulation of Lipid Metabolism by PPARalpha |

Application Details

| | |
|--------------------|---|
| Application Notes: | WB: 1:1000. WB: 1:1000. IHC-P: 1:10~50. FC: 1:10~50 |
| Restrictions: | For Research Use only |

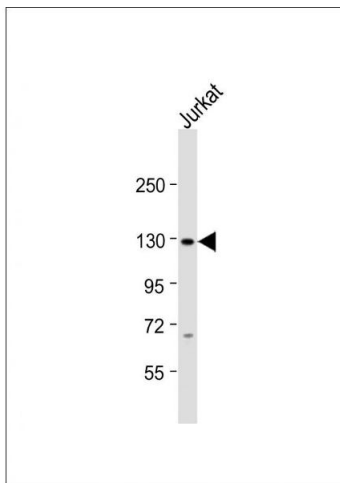
Handling

| | |
|--------------------|--|
| Format: | Liquid |
| Buffer: | Purified polyclonal antibody supplied in PBS with 0.09 % (W/V) sodium azide. |
| Preservative: | Sodium azide |
| Precaution of Use: | This product contains Sodium azide: a POISONOUS AND HAZARDOUS SUBSTANCE which should be handled by trained staff only. |
| Storage: | 4 °C,-20 °C |
| Storage Comment: | Maintain refrigerated at 2-8 °C for up to 6 months. For long term storage store at -20 °C in small aliquots to prevent freeze-thaw cycles. |
| Expiry Date: | 6 months |



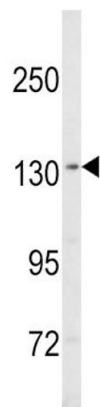
Immunohistochemistry (Paraffin-embedded Sections)

Image 1. Formalin-fixed and paraffin-embedded human breast carcinoma reacted with SREBF1 Antibody (Center), which was peroxidase-conjugated to the secondary antibody, followed by DAB staining. This data demonstrates the use of this antibody for immunohistochemistry, clinical relevance has not been evaluated.



Western Blotting

Image 2. Anti-SREBF1 Antibody (Center) at 1:1000 dilution + Jurkat whole cell lysate Lysates/proteins at 20 µg per lane. Secondary Goat Anti-Rabbit IgG, (H+L), Peroxidase conjugated at 1/10000 dilution. Predicted band size : 122 kDa Blocking/Dilution buffer: 5 % NFDm/TBST.



Western Blotting

Image 3. Western blot analysis of SREBF1 Antibody (Center) (ABIN652680 and ABIN2842452) in MDA-M cell line lysates (35 µg/lane). SREBF1 (arrow) was detected using the purified Pab.

Please check the [product details page](#) for more images. Overall 4 images are available for ABIN652680.