

Datasheet for ABIN652682

**anti-SORCS1 antibody (N-Term)****2** Images[Go to Product page](#)

## Overview

Quantity:	400 µL
Target:	SORCS1
Binding Specificity:	AA 126-154, N-Term
Reactivity:	Human
Host:	Rabbit
Clonality:	Polyclonal
Conjugate:	This SORCS1 antibody is un-conjugated
Application:	Western Blotting (WB), Flow Cytometry (FACS)

## Product Details

Immunogen:	This SORCS1 antibody is generated from rabbits immunized with a KLH conjugated synthetic peptide between 126-154 amino acids from the N-terminal region of human SORCS1.
Clone:	RB21585
Isotype:	Ig Fraction
Purification:	This antibody is purified through a protein A column, followed by peptide affinity purification.

## Target Details

Target:	SORCS1
Alternative Name:	SORCS1 ( <a href="#">SORCS1 Products</a> )
Background:	SORCS1 is one family member of vacuolar protein sorting 10 (VPS10) domain-containing

## Target Details

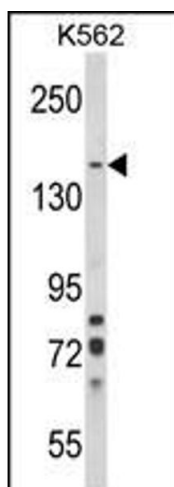
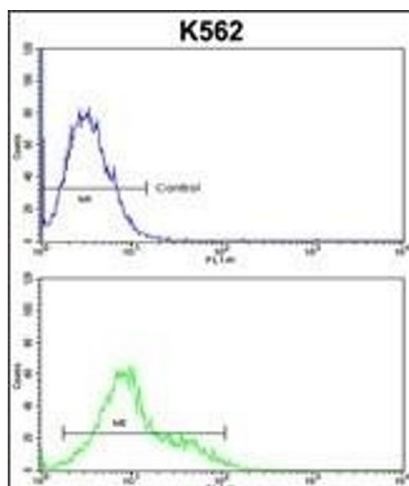
	receptor proteins. The VPS10 domain name comes from the yeast carboxypeptidase Y sorting receptor Vps10 protein.
Molecular Weight:	129635
Gene ID:	114815
NCBI Accession:	<a href="#">NP_001013049</a> , <a href="#">NP_001193498</a> , <a href="#">NP_001193499</a> , <a href="#">NP_001193500</a> , <a href="#">NP_001193501</a> , <a href="#">NP_443150</a>
UniProt:	<a href="#">Q8WY21</a>

## Application Details

Application Notes:	WB: 1:1000. FC: 1:10~50
Restrictions:	For Research Use only

## Handling

Format:	Liquid
Buffer:	Purified polyclonal antibody supplied in PBS with 0.09 % (W/V) sodium azide.
Preservative:	Sodium azide
Precaution of Use:	This product contains Sodium azide: a POISONOUS AND HAZARDOUS SUBSTANCE which should be handled by trained staff only.
Storage:	4 °C,-20 °C
Storage Comment:	Maintain refrigerated at 2-8 °C for up to 6 months. For long term storage store at -20 °C in small aliquots to prevent freeze-thaw cycles.
Expiry Date:	6 months



### Flow Cytometry

**Image 1.** SORCS1 Antibody (N-term) (ABIN652682 and ABIN2842454) flow cytometric analysis of k562 cells (bottom histogram) compared to a negative control cell (top histogram). FITC-conjugated goat-anti-rabbit secondary antibodies were used for the analysis.

### Western Blotting

**Image 2.** Western blot analysis of SORCS1 Antibody (N-term) (ABIN652682 and ABIN2842454) in K562 cell line lysates (35 µg/lane). SORCS1 (arrow) was detected using the purified Pab.