



[Go to Product page](#)

Datasheet for ABIN652687

anti-MTR4 antibody (AA 237-263)

3 Images

Overview

Quantity:	400 µL
Target:	MTR4 (SKIV2L2)
Binding Specificity:	AA 237-263
Reactivity:	Human
Host:	Rabbit
Clonality:	Polyclonal
Conjugate:	This MTR4 antibody is un-conjugated
Application:	Western Blotting (WB), Flow Cytometry (FACS), Immunohistochemistry (Paraffin-embedded Sections) (IHC (p))

Product Details

Immunogen:	This SKIV2L2 antibody is generated from rabbits immunized with a KLH conjugated synthetic peptide between 237-263 amino acids from the Central region of human SKIV2L2.
Clone:	RB22430
Isotype:	Ig Fraction
Predicted Reactivity:	M
Purification:	This antibody is purified through a protein A column, followed by peptide affinity purification.

Target Details

Target:	MTR4 (SKIV2L2)
---------	----------------

Target Details

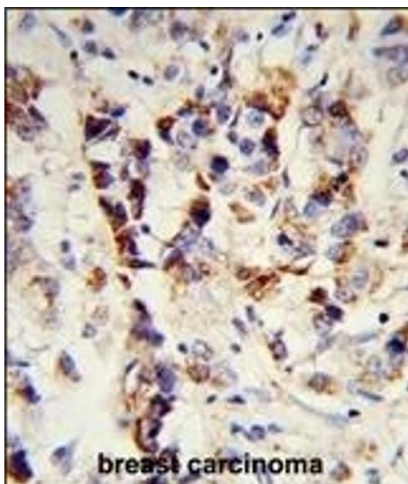
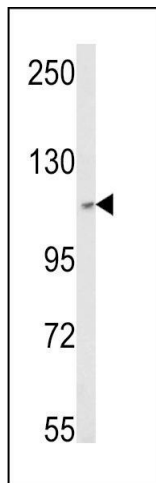
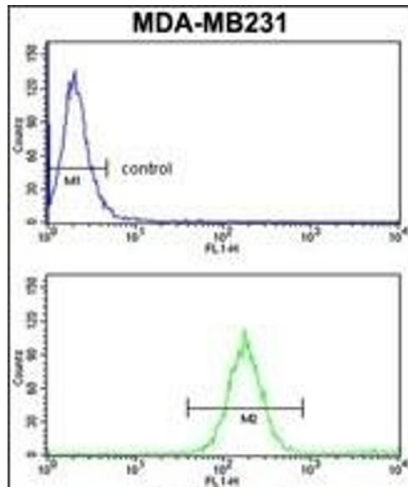
Alternative Name:	SKIV2L2 (SKIV2L2 Products)
Background:	SKIV2L2 may be involved in pre-mRNA splicing.
Molecular Weight:	117805
Gene ID:	23517
NCBI Accession:	NP_056175
UniProt:	P42285

Application Details

Application Notes:	WB: 1:1000. IHC-P: 1:50~100. FC: 1:10~50
Restrictions:	For Research Use only

Handling

Format:	Liquid
Buffer:	Purified polyclonal antibody supplied in PBS with 0.09 % (W/V) sodium azide.
Preservative:	Sodium azide
Precaution of Use:	This product contains Sodium azide: a POISONOUS AND HAZARDOUS SUBSTANCE which should be handled by trained staff only.
Storage:	4 °C,-20 °C
Storage Comment:	Maintain refrigerated at 2-8 °C for up to 6 months. For long term storage store at -20 °C in small aliquots to prevent freeze-thaw cycles.
Expiry Date:	6 months



Flow Cytometry

Image 1. SKIV2L2 Antibody (Center) (ABIN652687 and ABIN2842458) flow cytometry analysis of MDA-M cells (bottom histogram) compared to a negative control cell (top histogram). FITC-conjugated goat-anti-rabbit secondary antibodies were used for the analysis.

Western Blotting

Image 2. Western blot analysis of SKIV2L2 Antibody (Center) (ABIN652687 and ABIN2842458) in MCF-7 cell line lysates (35 µg/lane). SKIV2L2 (arrow) was detected using the purified Pab.

Immunohistochemistry (Paraffin-embedded Sections)

Image 3. Formalin-fixed and paraffin-embedded human breast carcinoma reacted with SKIV2L2 Antibody (Center), which was peroxidase-conjugated to the secondary antibody, followed by DAB staining. This data demonstrates the use of this antibody for immunohistochemistry, clinical relevance has not been evaluated.