

Datasheet for ABIN652700

anti-ARPC1B antibody (AA 159-188)[Go to Product page](#)**4** Images

Overview

Quantity:	400 µL
Target:	ARPC1B
Binding Specificity:	AA 159-188
Reactivity:	Human
Host:	Rabbit
Clonality:	Polyclonal
Conjugate:	This ARPC1B antibody is un-conjugated
Application:	Western Blotting (WB), Immunohistochemistry (Paraffin-embedded Sections) (IHC (p)), Flow Cytometry (FACS)

Product Details

Immunogen:	This ARPC1B antibody is generated from rabbits immunized with a KLH conjugated synthetic peptide between 159-188 amino acids from the Central region of human ARPC1B.
Clone:	RB22849
Isotype:	Ig Fraction
Predicted Reactivity:	X, B, M, Rat
Purification:	This antibody is purified through a protein A column, followed by peptide affinity purification.

Target Details

Target:	ARPC1B
---------	--------

Target Details

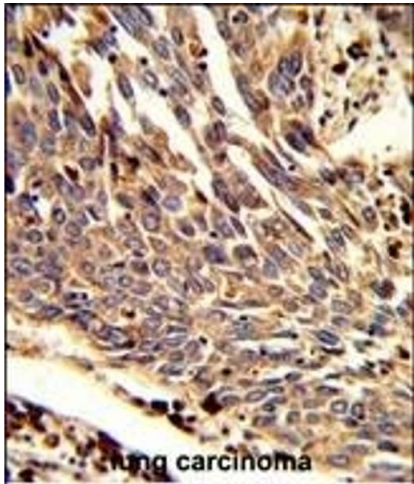
Alternative Name:	ARPC1B (ARPC1B Products)
Background:	ARPC1B is one of seven subunits of the human Arp2/3 protein complex. This subunit is a member of the SOP2 family of proteins and is most similar to the protein encoded by gene ARPC1A. The similarity between these two proteins suggests that they both may function as p41 subunit of the human Arp2/3 complex that has been implicated in the control of actin polymerization in cells. It is possible that the p41 subunit is involved in assembling and maintaining the structure of the Arp2/3 complex.
Molecular Weight:	40950
Gene ID:	10095
NCBI Accession:	NP_005711
UniProt:	O15143
Pathways:	RTK Signaling, Regulation of Actin Filament Polymerization

Application Details

Application Notes:	WB: 1:1000. WB: 1:1000. IHC-P: 1:50~100. FC: 1:10~50
Restrictions:	For Research Use only

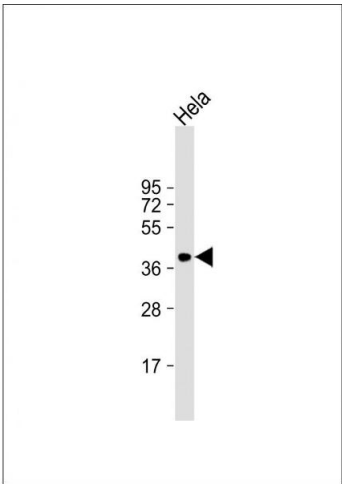
Handling

Format:	Liquid
Buffer:	Purified polyclonal antibody supplied in PBS with 0.09 % (W/V) sodium azide.
Preservative:	Sodium azide
Precaution of Use:	This product contains Sodium azide: a POISONOUS AND HAZARDOUS SUBSTANCE which should be handled by trained staff only.
Storage:	4 °C,-20 °C
Storage Comment:	Maintain refrigerated at 2-8 °C for up to 6 months. For long term storage store at -20 °C in small aliquots to prevent freeze-thaw cycles.
Expiry Date:	6 months



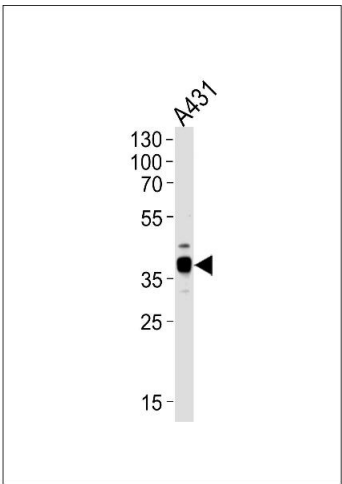
Immunohistochemistry (Paraffin-embedded Sections)

Image 1. Formalin-fixed and paraffin-embedded human lung carcinoma reacted with ARPC1B Antibody (Center), which was peroxidase-conjugated to the secondary antibody, followed by DAB staining. This data demonstrates the use of this antibody for immunohistochemistry, clinical relevance has not been evaluated.



Western Blotting

Image 2. Anti-ARPC1B Antibody (Center) at 1:1000 dilution + Hela whole cell lysate Lysates/proteins at 20 µg per lane. Secondary Goat Anti-Rabbit IgG, (H+L), Peroxidase conjugated at 1/10000 dilution. Predicted band size : 41 kDa Blocking/Dilution buffer: 5 % NFDM/TBST.



Western Blotting

Image 3. Western blot analysis of lysate from A431 cell line, using ARPC1B Antibody (Center) (ABIN652700 and ABIN2842466). (ABIN652700 and ABIN2842466) was diluted at 1:1000 at each lane. A goat anti-rabbit IgG H&L(HRP) at 1:5000 dilution was used as the secondary antibody. Lysate at 35 µg per lane.

Please check the [product details page](#) for more images. Overall 4 images are available for ABIN652700.