

Datasheet for ABIN652706
anti-DRD4 antibody (AA 365-391)

3 Images

1 Publication

[Go to Product page](#)

Overview

Quantity:	400 µL
Target:	DRD4
Binding Specificity:	AA 365-391
Reactivity:	Human, Mouse
Host:	Rabbit
Clonality:	Polyclonal
Conjugate:	This DRD4 antibody is un-conjugated
Application:	Western Blotting (WB), Immunohistochemistry (Paraffin-embedded Sections) (IHC (p)), Flow Cytometry (FACS)

Product Details

Immunogen:	This DRD4 antibody is generated from rabbits immunized with a KLH conjugated synthetic peptide between 365-391 amino acids from the Central region of human DRD4.
Clone:	RB22909
Isotype:	Ig Fraction
Purification:	This antibody is purified through a protein A column, followed by peptide affinity purification.

Target Details

Target:	DRD4
Alternative Name:	DRD4 (DRD4 Products)

Target Details

Background:	DRD4 is the D4 subtype of the dopamine receptor. The D4 subtype is a G-protein coupled receptor which inhibits adenylyl cyclase. It is a target for drugs which treat schizophrenia and Parkinson disease.
Molecular Weight:	43901
Gene ID:	1815
NCBI Accession:	NP_000788
UniProt:	P21917
Pathways:	cAMP Metabolic Process , Synaptic Membrane , Proton Transport , Photoperiodism , Negative Regulation of Transporter Activity

Application Details

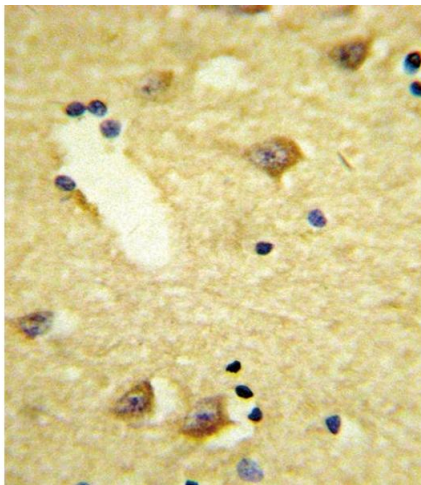
Application Notes:	WB: 1:1000. IHC-P: 1:10~50. FC: 1:10~50
Restrictions:	For Research Use only

Handling

Format:	Liquid
Buffer:	Purified polyclonal antibody supplied in PBS with 0.09 % (W/V) sodium azide.
Preservative:	Sodium azide
Precaution of Use:	This product contains Sodium azide: a POISONOUS AND HAZARDOUS SUBSTANCE which should be handled by trained staff only.
Storage:	4 °C,-20 °C
Storage Comment:	Maintain refrigerated at 2-8 °C for up to 6 months. For long term storage store at -20 °C in small aliquots to prevent freeze-thaw cycles.
Expiry Date:	6 months

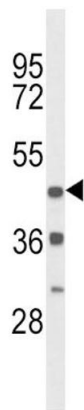
Publications

Product cited in:	Ma, Thapa, Morris, Michalakis, Biel, Frank, Bebak, Ding: "Loss of cone cyclic nucleotide-gated channel leads to alterations in light response modulating system and cellular stress response pathways: a gene expression profiling study." in: Human molecular genetics , Vol. 22, Issue 19, pp. 3906-19, (2013) (PubMed).
-------------------	---



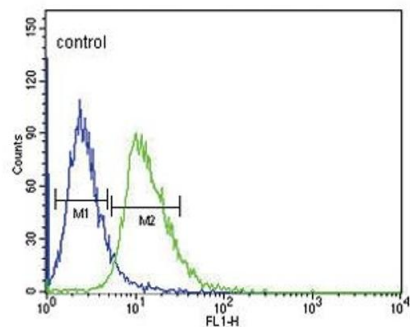
Immunohistochemistry (Paraffin-embedded Sections)

Image 1. Formalin-fixed and paraffin-embedded human brain tissue reacted with DRD4 Antibody (Center), which was peroxidase-conjugated to the secondary antibody, followed by DAB staining. This data demonstrates the use of this antibody for immunohistochemistry, clinical relevance has not been evaluated.



Western Blotting

Image 2. Western blot analysis of DRD4 Antibody (Center) (ABIN652706 and ABIN2842469) in mouse heart tissue lysates (35 µg/lane). DRD4 (arrow) was detected using the purified Pab.



Flow Cytometry

Image 3. DRD4 Antibody (Center) (ABIN652706 and ABIN2842469) flow cytometric analysis of CEM cells (right histogram) compared to a negative control cell (left histogram).FITC-conjugated goat-anti-rabbit secondary antibodies were used for the analysis.