



[Go to Product page](#)

Datasheet for ABIN652721

## anti-CDC42EP3 antibody (N-Term)

### 4 Images

#### Overview

|                      |   |
|----------------------|---|
| Quantity:            | 400 µL  |
| Target:              | CDC42EP3  |
| Binding Specificity: | AA 1-30, N-Term   |
| Reactivity:          | Human   |
| Host:                | Rabbit  |
| Clonality:           | Polyclonal  |
| Conjugate:           | This CDC42EP3 antibody is un-conjugated   |
| Application:         | Western Blotting (WB), Flow Cytometry (FACS), Immunohistochemistry (Paraffin-embedded Sections) (IHC (p)) |

#### Product Details

|                       |   |
|-----------------------|---|
| Immunogen:            | This CDC42EP3 antibody is generated from rabbits immunized with a KLH conjugated synthetic peptide between 1-30 amino acids from the N-terminal region of human CDC42EP3. |
| Clone:                | RB23512   |
| Isotype:              | Ig Fraction   |
| Predicted Reactivity: | M   |
| Purification:         | This antibody is purified through a protein A column, followed by peptide affinity purification.  |

#### Target Details

|         |          |
|---------|----------|
| Target: | CDC42EP3 |
|---------|----------|

## Target Details

---

|                   |  |
|-------------------|--|
| Alternative Name: | CDC42EP3 ( <a href="#">CDC42EP3 Products</a> )   |
| Background:       | CDC42EP3 is probably involved in the organization of the actin cytoskeleton. May act downstream of CDC42 to induce actin filament assembly leading to cell shape changes. It induces pseudopodia formation in fibroblasts. |
| Molecular Weight: | 27678  |
| Gene ID:          | 10602  |
| NCBI Accession:   | <a href="#">NP_001257365</a> , <a href="#">NP_001257366</a> , <a href="#">NP_001257367</a> , <a href="#">NP_006440</a>   |
| UniProt:          | <a href="#">Q9UKI2</a>   |

## Application Details

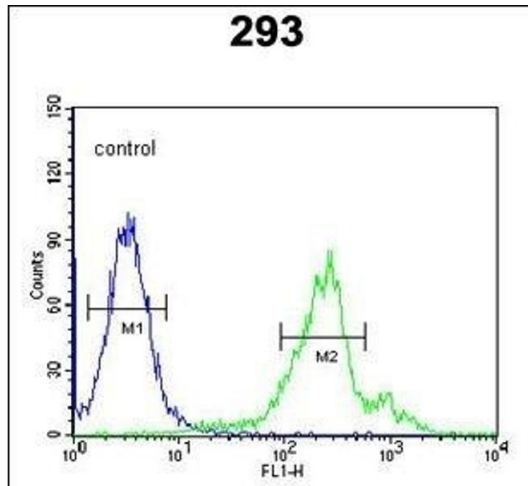
---

|                    |  |
|--------------------|--|
| Application Notes: | WB: 1:1000. WB: 1:1000. IHC-P: 1:50~100. FC: 1:10~50 |
| Restrictions:      | For Research Use only                                |

## Handling

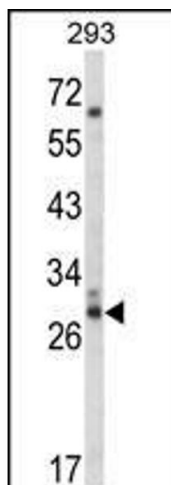
---

|                    |  |
|--------------------|--|
| Format:            | Liquid   |
| Buffer:            | Purified polyclonal antibody supplied in PBS with 0.09 % (W/V) sodium azide.   |
| Preservative:      | Sodium azide   |
| Precaution of Use: | This product contains Sodium azide: a POISONOUS AND HAZARDOUS SUBSTANCE which should be handled by trained staff only.                     |
| Storage:           | 4 °C,-20 °C  |
| Storage Comment:   | Maintain refrigerated at 2-8 °C for up to 6 months. For long term storage store at -20 °C in small aliquots to prevent freeze-thaw cycles. |
| Expiry Date:       | 6 months   |



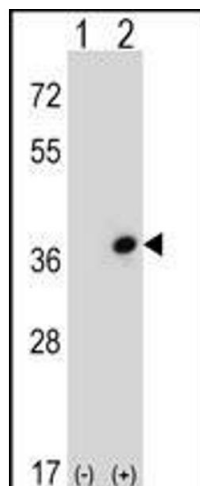
### Flow Cytometry

**Image 1.** CDC42EP3 Antibody (N-term) (ABIN652721 and ABIN2842477) flow cytometric analysis of 293 cells (right histogram) compared to a negative control cell (left histogram). FITC-conjugated goat-anti-rabbit secondary antibodies were used for the analysis.



### Western Blotting

**Image 2.** Western blot analysis of CDC42EP3 Antibody (N-term) (ABIN652721 and ABIN2842477) in 293 cell line lysates (35 µg/lane). CDC42EP3 (arrow) was detected using the purified Pab.



### Western Blotting

**Image 3.** Western blot analysis of CDC42EP3 (arrow) using rabbit polyclonal CDC42EP3 Antibody (N-term) (ABIN652721 and ABIN2842477). 293 cell lysates (2 µg/lane) either nontransfected (Lane 1) or transiently transfected (Lane 2) with the CDC42EP3 gene.

Please check the [product details page](#) for more images. Overall 4 images are available for ABIN652721.