

Datasheet for ABIN652725

anti-CTPS2 antibody (N-Term)**2** Images[Go to Product page](#)

Overview

Quantity:	400 µL
Target:	CTPS2
Binding Specificity:	AA 77-105, N-Term
Reactivity:	Human
Host:	Rabbit
Clonality:	Polyclonal
Conjugate:	This CTPS2 antibody is un-conjugated
Application:	Western Blotting (WB), Flow Cytometry (FACS)

Product Details

Immunogen:	This CTPS2 antibody is generated from rabbits immunized with a KLH conjugated synthetic peptide between 77-105 amino acids from the N-terminal region of human CTPS2.
Clone:	RB23574
Isotype:	Ig Fraction
Predicted Reactivity:	B, M, Rat
Purification:	This antibody is purified through a protein A column, followed by peptide affinity purification.

Target Details

Target:	CTPS2
Alternative Name:	CTPS2 (CTPS2 Products)

Target Details

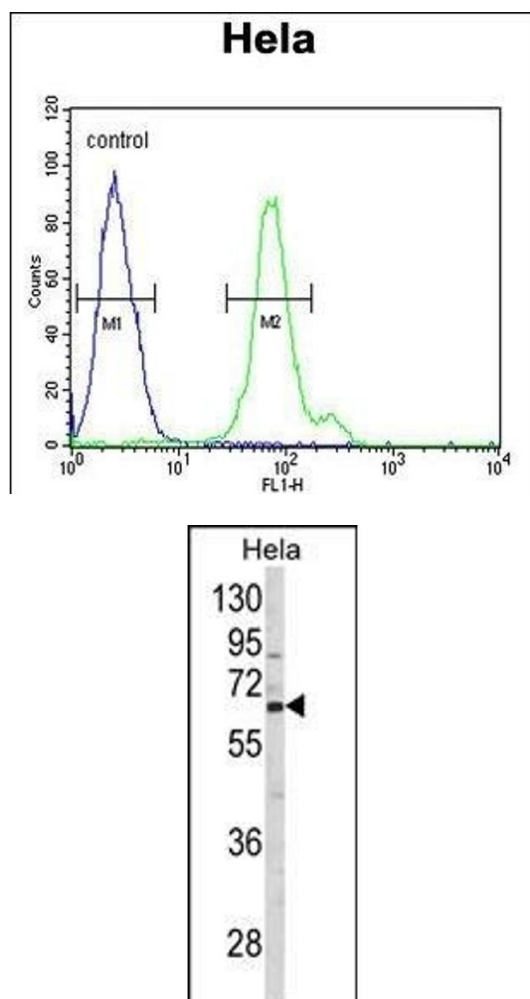
Background:	CTPS2 catalyzes the formation of CTP from UTP with the concomitant eamination of glutamine to glutamate. This protein is the rate-limiting enzyme in the synthesis of cytosine nucleotides, which play an important role in various metabolic processes and provide the precursors necessary for the synthesis of RNA and DNA. Cancer cells that exhibit increased cell proliferation also exhibit an increased activity of this encoded protein. Thus, this protein is an attractive target for selective chemotherapy.
Molecular Weight:	65678
Gene ID:	56474
NCBI Accession:	NP_001137474 , NP_062831 , NP_787055
UniProt:	Q9NRF8
Pathways:	Ribonucleoside Biosynthetic Process

Application Details

Application Notes:	WB: 1:1000. FC: 1:10~50
Restrictions:	For Research Use only

Handling

Format:	Liquid
Buffer:	Purified polyclonal antibody supplied in PBS with 0.09 % (W/V) sodium azide.
Preservative:	Sodium azide
Precaution of Use:	This product contains Sodium azide: a POISONOUS AND HAZARDOUS SUBSTANCE which should be handled by trained staff only.
Storage:	4 °C,-20 °C
Storage Comment:	Maintain refrigerated at 2-8 °C for up to 6 months. For long term storage store at -20 °C in small aliquots to prevent freeze-thaw cycles.
Expiry Date:	6 months



Flow Cytometry

Image 1. CTPS2 Antibody (N-term) (ABIN652725 and ABIN2842481) flow cytometric analysis of HeLa cells (right histogram) compared to a negative control cell (left histogram). FITC-conjugated goat-anti-rabbit secondary antibodies were used for the analysis.

Western Blotting

Image 2. Western blot analysis of CTPS2 Antibody (N-term) (ABIN652725 and ABIN2842481) in HeLa cell line lysates (35 μ g/lane). CTPS2 (arrow) was detected using the purified Pab.