

Datasheet for ABIN652750
anti-SLC3A1 antibody (AA 156-184)

2 Images

[Go to Product page](#)

Overview

Quantity:	400 µL
Target:	SLC3A1
Binding Specificity:	AA 156-184
Reactivity:	Human
Host:	Rabbit
Clonality:	Polyclonal
Application:	Western Blotting (WB), Flow Cytometry (FACS)

Product Details

Immunogen:	This SLC3A1 antibody is generated from rabbits immunized with a KLH conjugated synthetic peptide between 156-184 amino acids from the Central region of human SLC3A1.
Clone:	RB21834
Isotype:	Ig Fraction
Purification:	This antibody is purified through a protein A column, followed by peptide affinity purification.

Target Details

Target:	SLC3A1
Alternative Name:	SLC3A1 (SLC3A1 Products)
Background:	SLC3A1 is a type II membrane glycoprotein which is one of the components of the renal amino acid transporter which transports neutral and basic amino acids in the renal tubule and intestinal tract.

Target Details

Molecular Weight:	78852
Gene ID:	6519
NCBI Accession:	NP_000332
UniProt:	Q07837

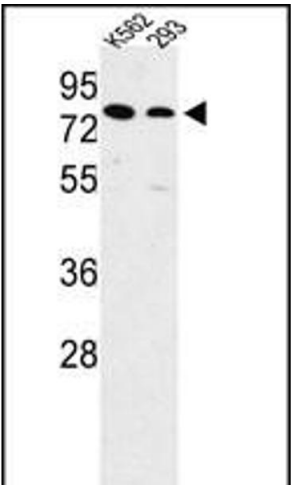
Application Details

Application Notes:	WB: 1:1000. FC: 1:10~50
Restrictions:	For Research Use only

Handling

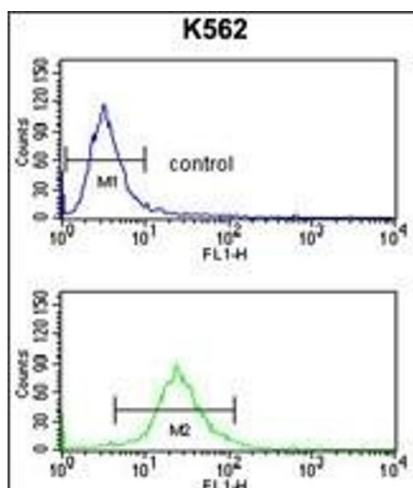
Format:	Liquid
Buffer:	Purified polyclonal antibody supplied in PBS with 0.09 % (W/V) sodium azide.
Preservative:	Sodium azide
Precaution of Use:	This product contains Sodium azide: a POISONOUS AND HAZARDOUS SUBSTANCE which should be handled by trained staff only.
Storage:	4 °C,-20 °C
Storage Comment:	Maintain refrigerated at 2-8 °C for up to 6 months. For long term storage store at -20 °C in small aliquots to prevent freeze-thaw cycles.
Expiry Date:	6 months

Images



Western Blotting

Image 1. Western blot analysis of SLC3A1 Antibody (Center) (ABIN652750 and ABIN2842494) in K562, 293 cell line lysates (35 µg/lane). SLC3A1 (arrow) was detected using the purified Pab.



Flow Cytometry

Image 2. SLC3A1 Antibody (Center) (ABIN652750 and ABIN2842494) flow cytometry analysis of K562 cells (bottom histogram) compared to a negative control cell (top histogram). FITC-conjugated goat-anti-rabbit secondary antibodies were used for the analysis.