



[Go to Product page](#)

Datasheet for ABIN652754
anti-CCR3 antibody (AA 291-318)

2 Images

Overview

Quantity:	400 µL
Target:	CCR3
Binding Specificity:	AA 291-318
Reactivity:	Human
Host:	Rabbit
Clonality:	Polyclonal
Conjugate:	This CCR3 antibody is un-conjugated
Application:	Western Blotting (WB), Flow Cytometry (FACS)

Product Details

Immunogen:	This CCR3 antibody is generated from rabbits immunized with a KLH conjugated synthetic peptide between 291-318 amino acids from the Central region of human CCR3.
Clone:	RB22038
Isotype:	Ig Fraction
Predicted Reactivity:	Pr
Purification:	This antibody is purified through a protein A column, followed by peptide affinity purification.

Target Details

Target:	CCR3
Alternative Name:	CCR3 (CCR3 Products)

Target Details

Background: CCR3 is a receptor for C-C type chemokines. It belongs to family 1 of the G protein-coupled receptors. This receptor binds and responds to a variety of chemokines, including eotaxin (CCL11), eotaxin-3 (CCL26), MCP-3 (CCL7), MCP-4 (CCL13), and RANTES (CCL5). It is highly expressed in eosinophils and basophils, and is also detected in TH1 and TH2 cells, as well as in airway epithelial cells. This receptor may contribute to the accumulation and activation of eosinophils and other inflammatory cells in the allergic airway. It is also known to be an entry co-receptor for HIV-1.

Molecular Weight: 41044

Gene ID: 1232

NCBI Accession: [NP_001828](#), [NP_847898](#), [NP_847899](#)

UniProt: [P51677](#)

Application Details

Application Notes: WB: 1:1000. FC: 1:10~50

Restrictions: For Research Use only

Handling

Format: Liquid

Buffer: Purified polyclonal antibody supplied in PBS with 0.09 % (W/V) sodium azide.

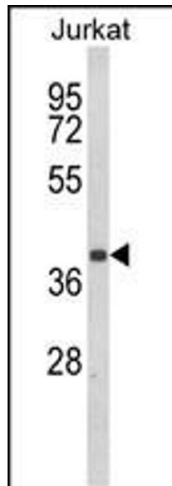
Preservative: Sodium azide

Precaution of Use: This product contains Sodium azide: a POISONOUS AND HAZARDOUS SUBSTANCE which should be handled by trained staff only.

Storage: 4 °C, -20 °C

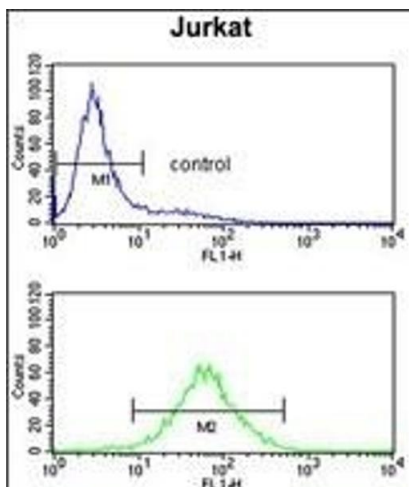
Storage Comment: Maintain refrigerated at 2-8 °C for up to 6 months. For long term storage store at -20 °C in small aliquots to prevent freeze-thaw cycles.

Expiry Date: 6 months



Western Blotting

Image 1. Western blot analysis of CCR3 Antibody (Center) (ABIN652754 and ABIN2842497) in Jurkat cell line lysates (35 µg/lane). CCR3 (arrow) was detected using the purified Pab.



Flow Cytometry

Image 2. CCR3 Antibody (Center) (ABIN652754 and ABIN2842497) flow cytometry analysis of Jurkat cells (bottom histogram) compared to a negative control cell (top histogram). FITC-conjugated goat-anti-rabbit secondary antibodies were used for the analysis.