

Datasheet for ABIN652759  
**anti-KCNH2 antibody (AA 861-888)**[Go to Product page](#)

## 2 Images

## Overview

Quantity:	400 µL
Target:	KCNH2
Binding Specificity:	AA 861-888
Reactivity:	Human
Host:	Rabbit
Clonality:	Polyclonal
Conjugate:	This KCNH2 antibody is un-conjugated
Application:	Western Blotting (WB), Flow Cytometry (FACS)

## Product Details

Immunogen:	This KCNH2 antibody is generated from rabbits immunized with a KLH conjugated synthetic peptide between 861-888 amino acids from the Central region of human KCNH2.
Clone:	RB22915
Isotype:	IgG
Purification:	This antibody is purified through a protein A column, followed by peptide affinity purification.

## Target Details

Target:	KCNH2
Alternative Name:	KCNH2 ( <a href="#">KCNH2 Products</a> )
Background:	KCNH2 is a voltage-activated potassium channel belonging to the eag family.

## Target Details

Molecular Weight:	126655
Gene ID:	3757
NCBI Accession:	<a href="#">NP_000229</a> , <a href="#">NP_001191727</a> , <a href="#">NP_742053</a> , <a href="#">NP_742054</a>
UniProt:	<a href="#">Q12809</a>

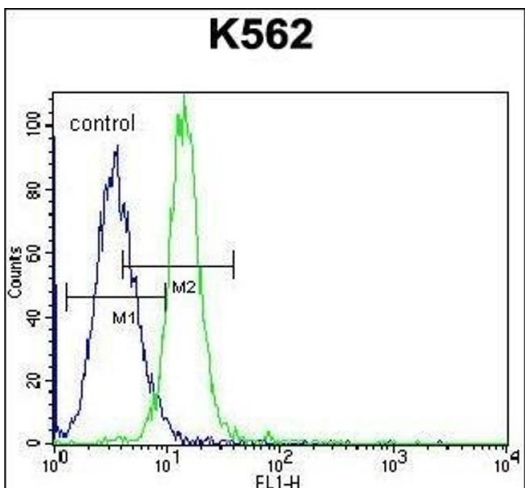
## Application Details

Application Notes:	WB: 1:1000. FC: 1:10~50
Restrictions:	For Research Use only

## Handling

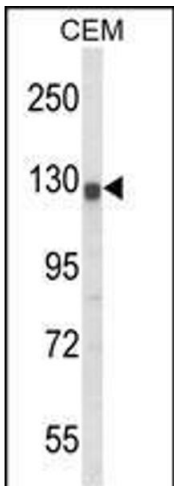
Format:	Liquid
Buffer:	Purified polyclonal antibody supplied in PBS with 0.09 % (W/V) sodium azide.
Preservative:	Sodium azide
Precaution of Use:	This product contains Sodium azide: a POISONOUS AND HAZARDOUS SUBSTANCE which should be handled by trained staff only.
Storage:	4 °C, -20 °C
Storage Comment:	Maintain refrigerated at 2-8 °C for up to 6 months. For long term storage store at -20 °C in small aliquots to prevent freeze-thaw cycles.
Expiry Date:	6 months

## Images



### Flow Cytometry

**Image 1.** KCNH2 Antibody (Center) (ABIN652759 and ABIN2842499) flow cytometric analysis of K562 cells (right histogram) compared to a negative control ( Rabbit IgG Isotype Control) (left histogram). FITC-conjugated goat-anti-rabbit secondary antibodies were used for the analysis.



Western Blotting

**Image 2.** Western blot analysis of KCNH2 Antibody (Center) (ABIN652759 and ABIN2842499) in CEM cell line lysates (35 µg/lane).KCNH2 (arrow) was detected using the purified Pab.