

Datasheet for ABIN652763
anti-WDSUB1 antibody (AA 303-331)[Go to Product page](#)

3 Images

Overview

Quantity:	400 µL
Target:	WDSUB1
Binding Specificity:	AA 303-331
Reactivity:	Human, Mouse
Host:	Rabbit
Clonality:	Polyclonal
Conjugate:	This WDSUB1 antibody is un-conjugated
Application:	Western Blotting (WB), Flow Cytometry (FACS)

Product Details

Immunogen:	This WDSUB1 antibody is generated from rabbits immunized with a KLH conjugated synthetic peptide between 303-331 amino acids from the Central region of human WDSUB1.
Clone:	RB23452
Isotype:	Ig Fraction
Purification:	This antibody is purified through a protein A column, followed by peptide affinity purification.

Target Details

Target:	WDSUB1
Alternative Name:	WDSUB1 (WDSUB1 Products)
Background:	WD repeat-containing proteins are those that contain 4 or more copies of the WD-repeat

Target Details

(tryptophan-aspartate repeat), a sequence motif approximately 31 amino acids long, that encodes a structural repeat. There are two isoforms of WDSUB1.

Molecular Weight: 52817

Gene ID: 151525

NCBI Accession: [NP_001121684](#), [NP_689741](#)

UniProt: [Q8N9V3](#)

Application Details

Application Notes: WB: 1:1000. WB: 1:1000. FC: 1:10~50

Restrictions: For Research Use only

Handling

Format: Liquid

Buffer: Purified polyclonal antibody supplied in PBS with 0.09 % (W/V) sodium azide.

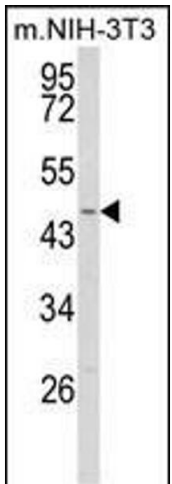
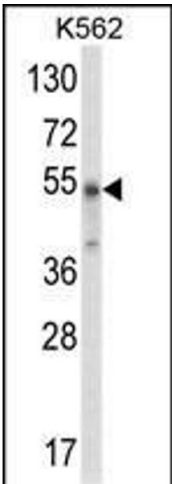
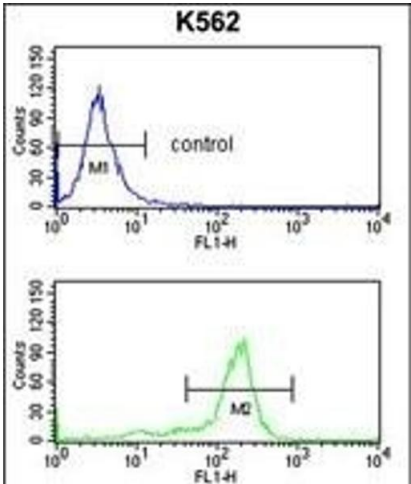
Preservative: Sodium azide

Precaution of Use: This product contains Sodium azide: a POISONOUS AND HAZARDOUS SUBSTANCE which should be handled by trained staff only.

Storage: 4 °C, -20 °C

Storage Comment: Maintain refrigerated at 2-8 °C for up to 6 months. For long term storage store at -20 °C in small aliquots to prevent freeze-thaw cycles.

Expiry Date: 6 months



Flow Cytometry

Image 1. WDSUB1 Antibody (Center) (ABIN652763 and ABIN2842501) flow cytometry analysis of K562 cells (bottom histogram) compared to a negative control cell (top histogram). FITC-conjugated goat-anti-rabbit secondary antibodies were used for the analysis.

Western Blotting

Image 2. Western blot analysis of WDSUB1 Antibody (Center) (ABIN652763 and ABIN2842501) in K562 cell line lysates (35 µg/lane). WDSUB1 (arrow) was detected using the purified Pab.

Western Blotting

Image 3. Western blot analysis of WDSUB1 Antibody (Center) (ABIN652763 and ABIN2842501) in NIH-3T3 cell line lysates (35 µg/lane). WDSUB1 (arrow) was detected using the purified Pab.