



[Go to Product page](#)

Datasheet for ABIN652766
anti-COTL1 antibody (C-Term)

4 Images

Overview

| | |
|----------------------|---|
| Quantity: | 400 µL |
| Target: | COTL1 |
| Binding Specificity: | AA 115-142, C-Term |
| Reactivity: | Human |
| Host: | Rabbit |
| Clonality: | Polyclonal |
| Conjugate: | This COTL1 antibody is un-conjugated |
| Application: | Western Blotting (WB), Flow Cytometry (FACS), Immunohistochemistry (Paraffin-embedded Sections) (IHC (p)) |

Product Details

| | |
|-----------------------|--|
| Immunogen: | This COTL1 antibody is generated from rabbits immunized with a KLH conjugated synthetic peptide between 115-142 amino acids from the C-terminal region of human COTL1. |
| Clone: | RB23505 |
| Isotype: | Ig Fraction |
| Predicted Reactivity: | B |
| Purification: | This antibody is purified through a protein A column, followed by peptide affinity purification. |

Target Details

| | |
|---------|-------|
| Target: | COTL1 |
|---------|-------|

Target Details

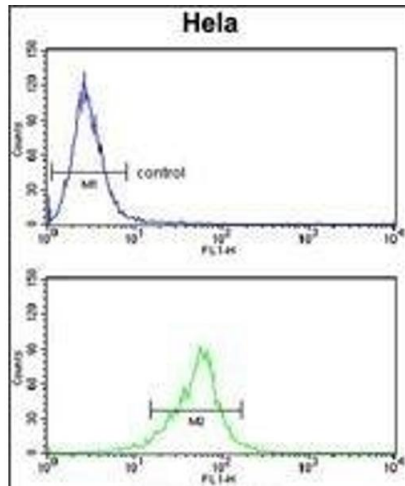
| | |
|-------------------|---|
| Alternative Name: | COTL1 (COTL1 Products) |
| Background: | COTL1 is one of the numerous actin-binding proteins which regulate the actin cytoskeleton. This protein binds F-actin, and also interacts with 5-lipoxygenase, which is the first committed enzyme in leukotriene biosynthesis. |
| Molecular Weight: | 15945 |
| Gene ID: | 23406 |
| NCBI Accession: | NP_066972 |
| UniProt: | Q14019 |

Application Details

| | |
|--------------------|--|
| Application Notes: | WB: 1:1000. WB: 1:1000. IHC-P: 1:50~100. FC: 1:10~50 |
| Restrictions: | For Research Use only |

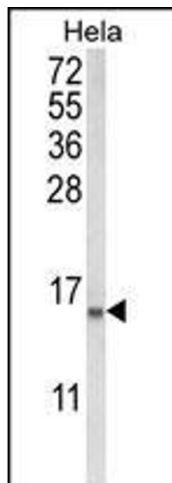
Handling

| | |
|--------------------|--|
| Format: | Liquid |
| Buffer: | Purified polyclonal antibody supplied in PBS with 0.09 % (W/V) sodium azide. |
| Preservative: | Sodium azide |
| Precaution of Use: | This product contains Sodium azide: a POISONOUS AND HAZARDOUS SUBSTANCE which should be handled by trained staff only. |
| Storage: | 4 °C,-20 °C |
| Storage Comment: | Maintain refrigerated at 2-8 °C for up to 6 months. For long term storage store at -20 °C in small aliquots to prevent freeze-thaw cycles. |
| Expiry Date: | 6 months |



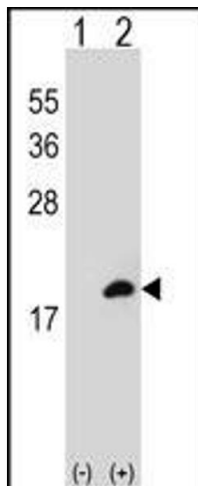
Flow Cytometry

Image 1. COTL1 Antibody (C-term) (ABIN652766 and ABIN2842503) flow cytometry analysis of HeLa cells (bottom histogram) compared to a negative control cell (top histogram). FITC-conjugated goat-anti-rabbit secondary antibodies were used for the analysis.



Western Blotting

Image 2. Western blot analysis of COTL1 Antibody (C-term) (ABIN652766 and ABIN2842503) in HeLa cell line lysates (35 µg/lane). COTL1 (arrow) was detected using the purified Pab.



Western Blotting

Image 3. Western blot analysis of COTL1 (arrow) using rabbit polyclonal COTL1 Antibody (C-term) (ABIN652766 and ABIN2842503). 293 cell lysates (2 µg/lane) either nontransfected (Lane 1) or transiently transfected (Lane 2) with the COTL1 gene.

Please check the [product details page](#) for more images. Overall 4 images are available for ABIN652766.