



[Go to Product page](#)

Datasheet for ABIN652770

anti-EWSR1 antibody (C-Term)

3 Images

Overview

Quantity:	400 µL
Target:	EWSR1
Binding Specificity:	AA 628-656, C-Term
Reactivity:	Human
Host:	Rabbit
Clonality:	Polyclonal
Conjugate:	This EWSR1 antibody is un-conjugated
Application:	Western Blotting (WB), Immunofluorescence (IF), Flow Cytometry (FACS)

Product Details

Immunogen:	This EWSR1 antibody is generated from rabbits immunized with a KLH conjugated synthetic peptide between 628-656 amino acids from the C-terminal region of human EWSR1.
Clone:	RB23546
Isotype:	Ig Fraction
Predicted Reactivity:	M
Purification:	This antibody is purified through a protein A column, followed by peptide affinity purification.

Target Details

Target:	EWSR1
Alternative Name:	EWSR1 (EWSR1 Products)

Target Details

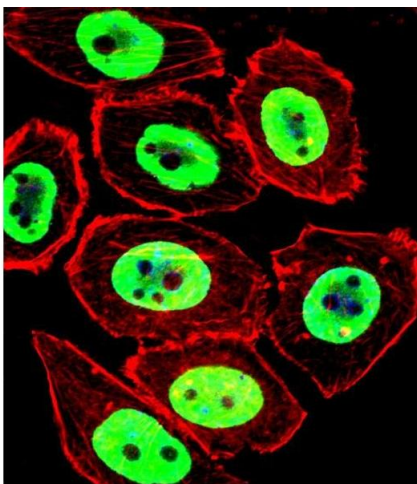
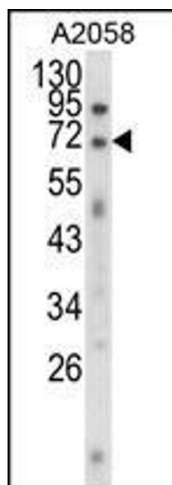
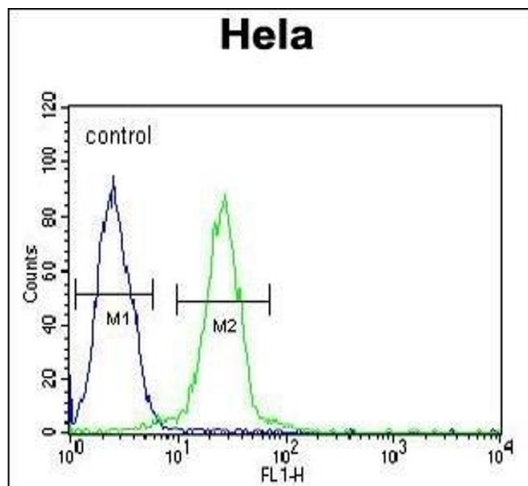
Background:	EWSR1 is a multifunctional protein that is involved in various cellular processes, including gene expression, cell signaling, and RNA processing and transport. The protein includes an N-terminal transcriptional activation domain and a C-terminal RNA-binding domain.
Molecular Weight:	68478
Gene ID:	2130
NCBI Accession:	NP_001156757 , NP_001156758 , NP_001156759 , NP_005234 , NP_053733
UniProt:	Q01844

Application Details

Application Notes:	IF: 1:10~50. WB: 1:1000. FC: 1:10~50
Restrictions:	For Research Use only

Handling

Format:	Liquid
Buffer:	Purified polyclonal antibody supplied in PBS with 0.09 % (W/V) sodium azide.
Preservative:	Sodium azide
Precaution of Use:	This product contains Sodium azide: a POISONOUS AND HAZARDOUS SUBSTANCE which should be handled by trained staff only.
Storage:	4 °C, -20 °C
Storage Comment:	Maintain refrigerated at 2-8 °C for up to 6 months. For long term storage store at -20 °C in small aliquots to prevent freeze-thaw cycles.
Expiry Date:	6 months



Flow Cytometry

Image 1. EWSR1 Antibody (C-term) (ABIN652770 and ABIN2842507) flow cytometric analysis of HeLa cells (right histogram) compared to a negative control cell (left histogram). FITC-conjugated goat-anti-rabbit secondary antibodies were used for the analysis.

Western Blotting

Image 2. Western blot analysis of EWSR1 Antibody (C-term) (ABIN652770 and ABIN2842507) in cell line lysates (35 μ g/lane). EWSR1 (arrow) was detected using the purified Pab.

Immunofluorescence

Image 3. Fluorescent confocal image of cell stained with EWSR1 Antibody (C-term) (ABIN652770 and ABIN2842507). cells were fixed with 4 % PFA (20 min), permeabilized with Triton X-100 (0.1 %, 10 min), then incubated with EWSR1 primary antibody (1:25, 1 h at 37 °C). For secondary antibody, Alexa Fluor® 488 conjugated donkey anti-rabbit antibody (green) was used (1:400, 50 min at 37 °C). Cytoplasmic actin was counterstained with Alexa Fluor® 555 (red) conjugated Phalloidin (7 units/mL, 1 h at 37 °C). Nuclei were counterstained with DAPI (blue) (10 μ g/mL, 10 min). EWSR1 immunoreactivity is localized to Nucleus significantly.