



[Go to Product page](#)

Datasheet for ABIN652772
anti-NCK1 antibody (N-Term)

2 Images

Overview

Quantity:	400 µL
Target:	NCK1
Binding Specificity:	AA 3-29, N-Term
Reactivity:	Human
Host:	Rabbit
Clonality:	Polyclonal
Conjugate:	This NCK1 antibody is un-conjugated
Application:	Western Blotting (WB), Flow Cytometry (FACS)

Product Details

Immunogen:	This NCK1 antibody is generated from rabbits immunized with a KLH conjugated synthetic peptide between 3-29 amino acids from the N-terminal region of human NCK1.
Clone:	RB23609
Isotype:	Ig Fraction
Predicted Reactivity:	M
Purification:	This antibody is purified through a protein A column, followed by peptide affinity purification.

Target Details

Target:	NCK1
Alternative Name:	NCK1 (NCK1 Products)

Target Details

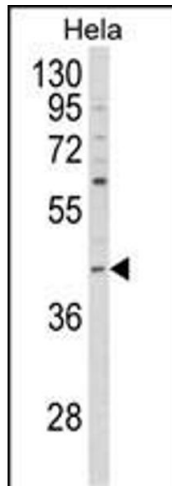
Background:	NCK1 is one of the signaling and transforming proteins containing Src homology 2 and 3 (SH2 and SH3) domains. It is located in the cytoplasm and is an adaptor protein involved in transducing signals from receptor tyrosine kinases to downstream signal recipients such as RAS.
Molecular Weight:	42864
Gene ID:	4690
NCBI Accession:	NP_001177725 , NP_006144
UniProt:	P16333
Pathways:	TCR Signaling , Regulation of Actin Filament Polymerization , Signaling Events mediated by VEGFR1 and VEGFR2 , VEGFR1 Specific Signals

Application Details

Application Notes:	WB: 1:1000. FC: 1:10~50
Restrictions:	For Research Use only

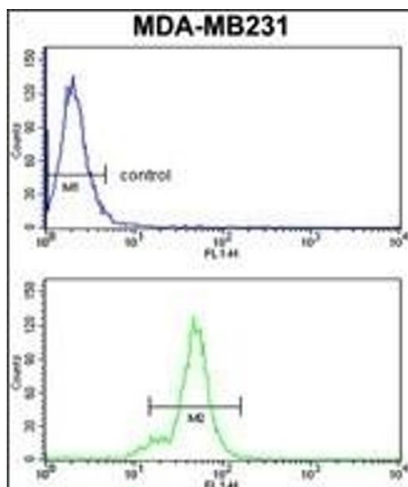
Handling

Format:	Liquid
Buffer:	Purified polyclonal antibody supplied in PBS with 0.09 % (W/V) sodium azide.
Preservative:	Sodium azide
Precaution of Use:	This product contains Sodium azide: a POISONOUS AND HAZARDOUS SUBSTANCE which should be handled by trained staff only.
Storage:	4 °C, -20 °C
Storage Comment:	Maintain refrigerated at 2-8 °C for up to 6 months. For long term storage store at -20 °C in small aliquots to prevent freeze-thaw cycles.
Expiry Date:	6 months



Western Blotting

Image 1. Western blot analysis of NCK1 Antibody (N-term) (ABIN652772 and ABIN2842508) in HeLa cell line lysates (35 µg/lane). NCK1 (arrow) was detected using the purified Pab.



Flow Cytometry

Image 2. NCK1 Antibody (N-term) (ABIN652772 and ABIN2842508) flow cytometry analysis of MDA-M cells (bottom histogram) compared to a negative control cell (top histogram). FITC-conjugated goat-anti-rabbit secondary antibodies were used for the analysis.