

Datasheet for ABIN652773  
**anti-RBBP7 antibody (N-Term)**[Go to Product page](#)

## 2 Images

## Overview

Quantity:	400 µL
Target:	RBBP7
Binding Specificity:	AA 1-30, N-Term
Reactivity:	Human
Host:	Rabbit
Clonality:	Polyclonal
Conjugate:	This RBBP7 antibody is un-conjugated
Application:	Western Blotting (WB), Flow Cytometry (FACS)

## Product Details

Immunogen:	This RBBP7 antibody is generated from rabbits immunized with a KLH conjugated synthetic peptide between 1-30 amino acids from the N-terminal region of human RBBP7.
Clone:	RB23612
Isotype:	Ig Fraction
Predicted Reactivity:	B, Pr, M, Rat, X
Purification:	This antibody is purified through a protein A column, followed by peptide affinity purification.

## Target Details

Target:	RBBP7
Alternative Name:	RBBP7 ( <a href="#">RBBP7 Products</a> )

## Target Details

**Background:** RBBP7 is a ubiquitously expressed nuclear protein and belongs to a highly conserved subfamily of WD-repeat proteins. It is found among several proteins that binds directly to retinoblastoma protein, which regulates cell proliferation. This protein is found in many histone deacetylase complexes, including mSin3 co-repressor complex. It is also present in protein complexes involved in chromatin assembly. This protein can interact with BRCA1 tumor-suppressor gene and may have a role in the regulation of cell proliferation and differentiation.

**Molecular Weight:** 47820

**Gene ID:** 5931

**NCBI Accession:** [NP\\_001185648](#), [NP\\_002884](#)

**UniProt:** [Q16576](#)

## Application Details

**Application Notes:** WB: 1:1000. FC: 1:10~50

**Restrictions:** For Research Use only

## Handling

**Format:** Liquid

**Buffer:** Purified polyclonal antibody supplied in PBS with 0.09 % (W/V) sodium azide.

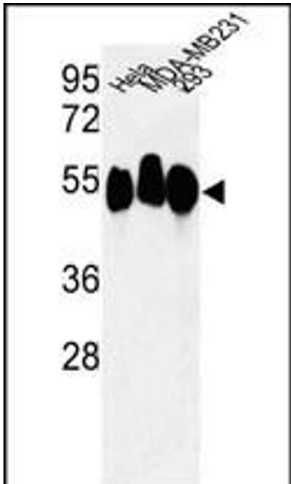
**Preservative:** Sodium azide

**Precaution of Use:** This product contains Sodium azide: a POISONOUS AND HAZARDOUS SUBSTANCE which should be handled by trained staff only.

**Storage:** 4 °C, -20 °C

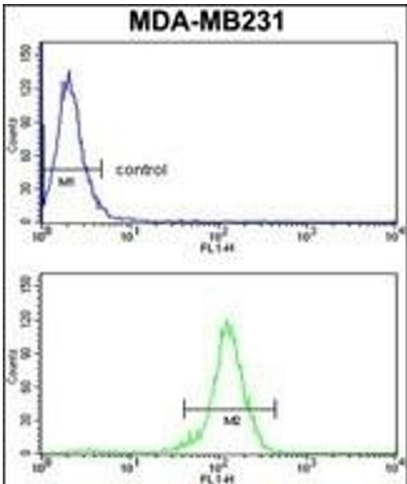
**Storage Comment:** Maintain refrigerated at 2-8 °C for up to 6 months. For long term storage store at -20 °C in small aliquots to prevent freeze-thaw cycles.

**Expiry Date:** 6 months



### Western Blotting

**Image 1.** Western blot analysis of RBBP7 Antibody (N-term) (ABIN652773 and ABIN2842509) in HeLa, MDA-M, 293 cell line lysates (35 µg/lane). RBBP7 (arrow) was detected using the purified Pab.



### Flow Cytometry

**Image 2.** RBBP7 Antibody (N-term) (ABIN652773 and ABIN2842509) flow cytometry analysis of MDA-M cells (bottom histogram) compared to a negative control cell (top histogram). FITC-conjugated goat-anti-rabbit secondary antibodies were used for the analysis.