

Datasheet for ABIN652776
anti-PISD antibody (AA 223-250)[Go to Product page](#)

3 Images

Overview

Quantity:	400 µL
Target:	PISD
Binding Specificity:	AA 223-250
Reactivity:	Human, Mouse
Host:	Rabbit
Clonality:	Polyclonal
Conjugate:	This PISD antibody is un-conjugated
Application:	Western Blotting (WB), Immunohistochemistry (Paraffin-embedded Sections) (IHC (p)), Flow Cytometry (FACS)

Product Details

Immunogen:	This PISD antibody is generated from rabbits immunized with a KLH conjugated synthetic peptide between 223-250 amino acids from the Central region of human PISD.
Clone:	RB23626
Isotype:	Ig Fraction
Purification:	This antibody is purified through a protein A column, followed by peptide affinity purification.

Target Details

Target:	PISD
Alternative Name:	PISD (PISD Products)

Target Details

Background: Phosphatidylserine decarboxylases catalyze the formation of phosphatidylethanolamine (PE) by decarboxylation of phosphatidylserine (PS). Type I PSDs, such as PISD, are targeted to the inner mitochondrial membrane by an N-terminal targeting sequence. PISD also contains a conserved LGST motif that functions as an autocatalytic cleavage site where the proenzyme is split into mature alpha and beta subunits

Molecular Weight: 46672

Gene ID: 23761

NCBI Accession: [NP_055153](#)

UniProt: [Q9UG56](#)

Application Details

Application Notes: WB: 1:1000. IHC-P: 1:50~100. FC: 1:10~50

Restrictions: For Research Use only

Handling

Format: Liquid

Buffer: Purified polyclonal antibody supplied in PBS with 0.09 % (W/V) sodium azide.

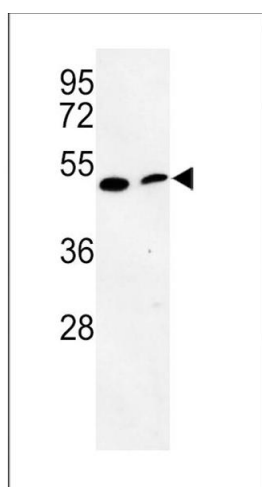
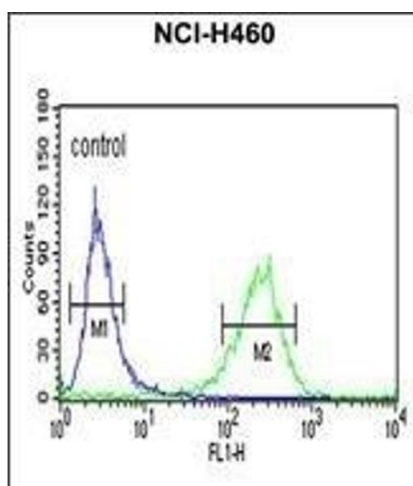
Preservative: Sodium azide

Precaution of Use: This product contains Sodium azide: a POISONOUS AND HAZARDOUS SUBSTANCE which should be handled by trained staff only.

Storage: 4 °C,-20 °C

Storage Comment: Maintain refrigerated at 2-8 °C for up to 6 months. For long term storage store at -20 °C in small aliquots to prevent freeze-thaw cycles.

Expiry Date: 6 months



Flow Cytometry

Image 1. PISD Antibody (Center) (ABIN652776 and ABIN2842511) flow cytometric analysis of NCI- cells (right histogram) compared to a negative control cell (left histogram). FITC-conjugated goat-anti-rabbit secondary antibodies were used for the analysis.

Western Blotting

Image 2. Western blot analysis of PISD Antibody (Center) (ABIN652776 and ABIN2842511) in mouse cerebellum tissue and mouse NIH-3T3 cell line lysates (35 µg/lane). PISD (arrow) was detected using the purified Pab.

Immunohistochemistry (Paraffin-embedded Sections)

Image 3. Formalin-fixed and paraffin-embedded human brain reacted with PISD Antibody (Center), which was peroxidase-conjugated to the secondary antibody, followed by DAB staining. This data demonstrates the use of this antibody for immunohistochemistry, clinical relevance has not been evaluated.