

Datasheet for ABIN652781

**anti-Dolichol Kinase antibody (AA 312-339)****3** Images[Go to Product page](#)

## Overview

Quantity:	400 µL
Target:	Dolichol Kinase (DOLK)
Binding Specificity:	AA 312-339
Reactivity:	Human
Host:	Rabbit
Clonality:	Polyclonal
Conjugate:	This Dolichol Kinase antibody is un-conjugated
Application:	Western Blotting (WB), Flow Cytometry (FACS), Immunohistochemistry (Paraffin-embedded Sections) (IHC (p))

## Product Details

Immunogen:	This DOLK antibody is generated from rabbits immunized with a KLH conjugated synthetic peptide between 312-339 amino acids from the Central region of human DOLK.
Clone:	RB23701
Isotype:	Ig Fraction
Purification:	This antibody is purified through a protein A column, followed by peptide affinity purification.

## Target Details

Target:	Dolichol Kinase (DOLK)
Alternative Name:	DOLK ( <a href="#">DOLK Products</a> )

## Target Details

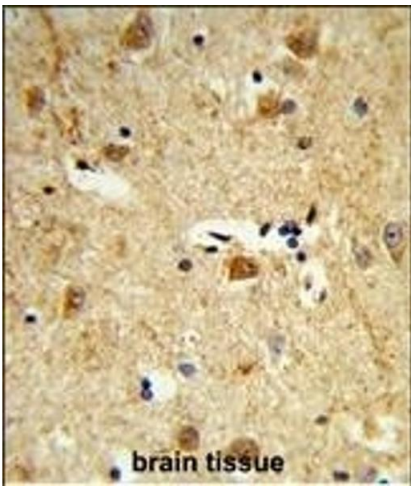
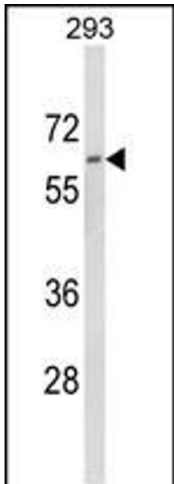
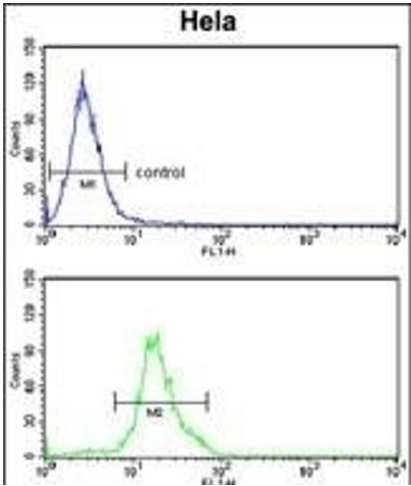
Background:	DOLK is involved in the synthesis of the sugar donor Dol-P-Man which is required in the synthesis of N-linked and O-linked oligosaccharides and for that of GPI anchors (By similarity).
Molecular Weight:	59268
Gene ID:	22845
NCBI Accession:	<a href="#">NP_055723</a>
UniProt:	<a href="#">Q9UPQ8</a>

## Application Details

Application Notes:	WB: 1:1000. IHC-P: 1:50~100. FC: 1:10~50
Restrictions:	For Research Use only

## Handling

Format:	Liquid
Buffer:	Purified polyclonal antibody supplied in PBS with 0.09 % (W/V) sodium azide.
Preservative:	Sodium azide
Precaution of Use:	This product contains Sodium azide: a POISONOUS AND HAZARDOUS SUBSTANCE which should be handled by trained staff only.
Storage:	4 °C,-20 °C
Storage Comment:	Maintain refrigerated at 2-8 °C for up to 6 months. For long term storage store at -20 °C in small aliquots to prevent freeze-thaw cycles.
Expiry Date:	6 months



Flow Cytometry

**Image 1.** DOLK Antibody (Center) (ABIN652781 and ABIN2842513) flow cytometry analysis of HeLa cells (bottom histogram) compared to a negative control cell (top histogram). FITC-conjugated goat-anti-rabbit secondary antibodies were used for the analysis.

Western Blotting

**Image 2.** Western blot analysis of DOLK Antibody (Center) (ABIN652781 and ABIN2842513) in 293 cell line lysates (35 µg/lane). DOLK (arrow) was detected using the purified Pab.

Immunohistochemistry (Paraffin-embedded Sections)

**Image 3.** Formalin-fixed and paraffin-embedded human brain tissue reacted with DOLK Antibody (Center), which was peroxidase-conjugated to the secondary antibody, followed by DAB staining. This data demonstrates the use of this antibody for immunohistochemistry, clinical relevance has not been evaluated.