



[Go to Product page](#)

Datasheet for ABIN652785  
**anti-RAC2 antibody (C-Term)**

2 Images

Overview

|                      |                                              |
|----------------------|----------------------------------------------|
| Quantity:            | 400 µL                                       |
| Target:              | RAC2                                         |
| Binding Specificity: | AA 164-188, C-Term                           |
| Reactivity:          | Human                                        |
| Host:                | Rabbit                                       |
| Clonality:           | Polyclonal                                   |
| Conjugate:           | This RAC2 antibody is un-conjugated          |
| Application:         | Western Blotting (WB), Flow Cytometry (FACS) |

Product Details

|               |                                                                                                                                                                      |
|---------------|----------------------------------------------------------------------------------------------------------------------------------------------------------------------|
| Immunogen:    | This RAC2 antibody is generated from rabbits immunized with a KLH conjugated synthetic peptide between 164-188 amino acids from the C-terminal region of human RAC2. |
| Clone:        | RB21045                                                                                                                                                              |
| Isotype:      | Ig Fraction                                                                                                                                                          |
| Purification: | This antibody is purified through a protein A column, followed by peptide affinity purification.                                                                     |

Target Details

|                   |                                                                                      |
|-------------------|--------------------------------------------------------------------------------------|
| Target:           | RAC2                                                                                 |
| Alternative Name: | RAC2 ( <a href="#">RAC2 Products</a> )                                               |
| Background:       | RAC2 is a GTPase which belongs to the RAS superfamily of small GTP-binding proteins. |

## Target Details

---

Members of this superfamily appear to regulate a diverse array of cellular events, including the control of cell growth, cytoskeletal reorganization, and the activation of protein kinases.

Molecular Weight: 21429

Gene ID: 5880

NCBI Accession: [NP\\_002863](#)

UniProt: [P15153](#)

Pathways: [RTK Signaling](#), [VEGF Signaling](#)

## Application Details

---

Application Notes: WB: 1:1000. FC: 1:10~50

Restrictions: For Research Use only

## Handling

---

Format: Liquid

Buffer: Purified polyclonal antibody supplied in PBS with 0.09 % (W/V) sodium azide.

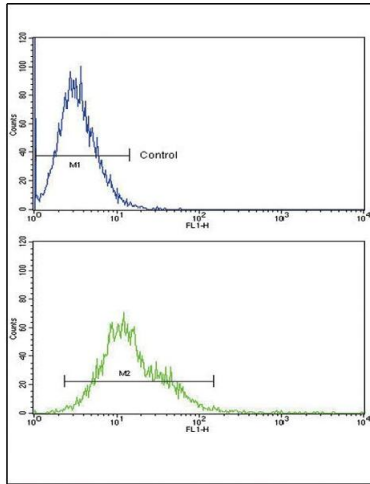
Preservative: Sodium azide

Precaution of Use: This product contains Sodium azide: a POISONOUS AND HAZARDOUS SUBSTANCE which should be handled by trained staff only.

Storage: 4 °C, -20 °C

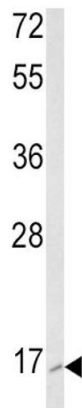
Storage Comment: Maintain refrigerated at 2-8 °C for up to 6 months. For long term storage store at -20 °C in small aliquots to prevent freeze-thaw cycles.

Expiry Date: 6 months



### Flow Cytometry

**Image 1.** RAC2 Antibody (C-term) (ABIN652785 and ABIN2842514) flow cytometric analysis of k562 cells (bottom histogram) compared to a negative control cell (top histogram). FITC-conjugated goat-anti-rabbit secondary antibodies were used for the analysis.



### Western Blotting

**Image 2.** Western blot analysis of RAC2 Antibody (C-term) (ABIN652785 and ABIN2842514) in K562 cell line lysates (35 µg/lane). RAC2 (arrow) was detected using the purified Pab.