

Datasheet for ABIN652789
anti-PCCB antibody (AA 82-107)[Go to Product page](#)

2 Images

Overview

Quantity:	400 µL
Target:	PCCB
Binding Specificity:	AA 82-107
Reactivity:	Human
Host:	Rabbit
Clonality:	Polyclonal
Conjugate:	This PCCB antibody is un-conjugated
Application:	Western Blotting (WB), Flow Cytometry (FACS)

Product Details

Immunogen:	This PCCB antibody is generated from rabbits immunized with a KLH conjugated synthetic peptide between 82-107 amino acids from the Central region of human PCCB.
Clone:	RB21310
Isotype:	Ig Fraction
Predicted Reactivity:	B, M, Pig
Purification:	This antibody is purified through a protein A column, followed by peptide affinity purification.

Target Details

Target:	PCCB
Alternative Name:	PCCB (PCCB Products)

Target Details

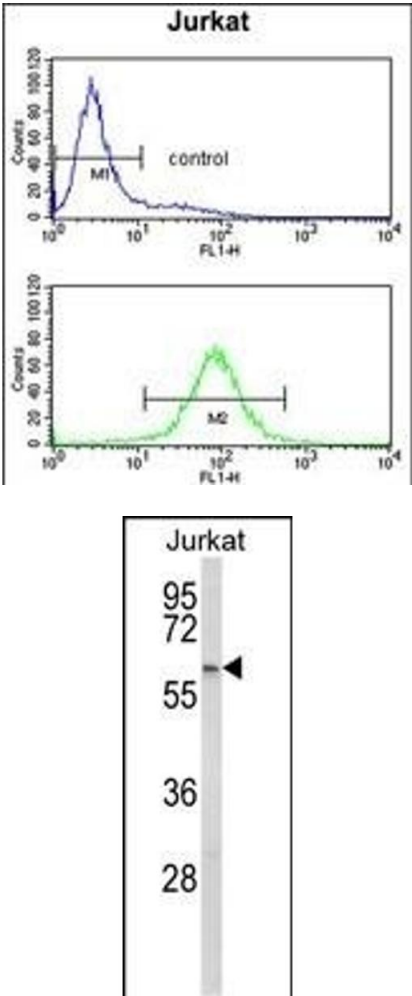
Background:	PCCB is a subunit of the propionyl-CoA carboxylase (PCC) enzyme, which is involved in the catabolism of propionyl-CoA. PCC is a mitochondrial enzyme that probably acts as a dodecamer of six alpha subunits and six beta subunits.
Molecular Weight:	58216
Gene ID:	5096
NCBI Accession:	NP_000523 , NP_001171485
UniProt:	P05166
Pathways:	Monocarboxylic Acid Catabolic Process

Application Details

Application Notes:	WB: 1:1000. FC: 1:10~50
Restrictions:	For Research Use only

Handling

Format:	Liquid
Buffer:	Purified polyclonal antibody supplied in PBS with 0.09 % (W/V) sodium azide.
Preservative:	Sodium azide
Precaution of Use:	This product contains Sodium azide: a POISONOUS AND HAZARDOUS SUBSTANCE which should be handled by trained staff only.
Storage:	4 °C,-20 °C
Storage Comment:	Maintain refrigerated at 2-8 °C for up to 6 months. For long term storage store at -20 °C in small aliquots to prevent freeze-thaw cycles.
Expiry Date:	6 months



Flow Cytometry

Image 1. PCCB Antibody (Center) (ABIN652789 and ABIN2842517) flow cytometry analysis of Jurkat cells (bottom histogram) compared to a negative control cell (top histogram). FITC-conjugated goat-anti-rabbit secondary antibodies were used for the analysis.

Western Blotting

Image 2. Western blot analysis of PCCB Antibody (Center) (ABIN652789 and ABIN2842517) in Jurkat cell line lysates (35 µg/lane). PCCB (arrow) was detected using the purified Pab.