

Datasheet for ABIN652792
anti-UHRF1 antibody (AA 229-257)

3 Images

[Go to Product page](#)

Overview

Quantity:	400 µL
Target:	UHRF1
Binding Specificity:	AA 229-257
Reactivity:	Human
Host:	Rabbit
Clonality:	Polyclonal
Conjugate:	This UHRF1 antibody is un-conjugated
Application:	Western Blotting (WB), Immunofluorescence (IF), Flow Cytometry (FACS)

Product Details

Immunogen:	This UHRF1 antibody is generated from rabbits immunized with a KLH conjugated synthetic peptide between 229-257 amino acids from the Central region of human UHRF1.
Clone:	RB21516
Isotype:	Ig Fraction
Purification:	This antibody is purified through a protein A column, followed by peptide affinity purification.

Target Details

Target:	UHRF1
Alternative Name:	UHRF1 (UHRF1 Products)
Background:	UHRF1 is a member of a subfamily of RING-finger type E3 ubiquitin ligases. The protein binds

Target Details

to specific DNA sequences, and recruits a histone acetylase to regulate gene expression. Its expression peaks at late G1 phase and continues during G2 and M phases of the cell cycle. It plays a major role in the G1/S transition by regulating topoisomerase IIalpha and retinoblastoma gene expression, and functions in the p53-dependent DNA damage checkpoint.

Molecular Weight: 89814

Gene ID: 29128

NCBI Accession: [NP_001041666](#), [NP_037414](#)

UniProt: [Q96T88](#)

Application Details

Application Notes: IF: 1:10~50. WB: 1:1000. FC: 1:10~50

Restrictions: For Research Use only

Handling

Format: Liquid

Buffer: Purified polyclonal antibody supplied in PBS with 0.09 % (W/V) sodium azide.

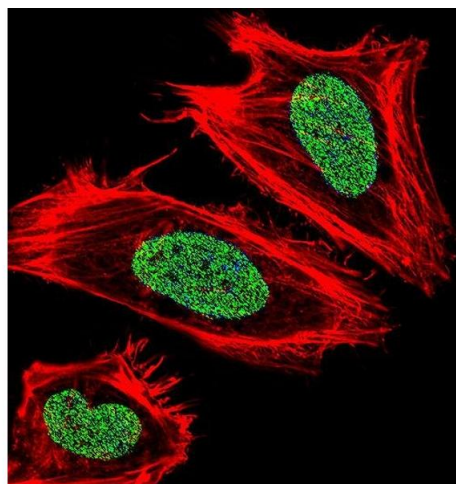
Preservative: Sodium azide

Precaution of Use: This product contains Sodium azide: a POISONOUS AND HAZARDOUS SUBSTANCE which should be handled by trained staff only.

Storage: 4 °C, -20 °C

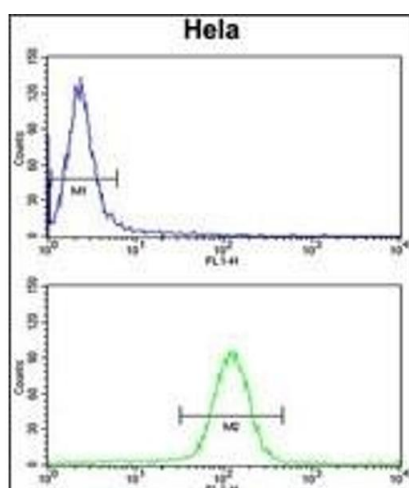
Storage Comment: Maintain refrigerated at 2-8 °C for up to 6 months. For long term storage store at -20 °C in small aliquots to prevent freeze-thaw cycles.

Expiry Date: 6 months



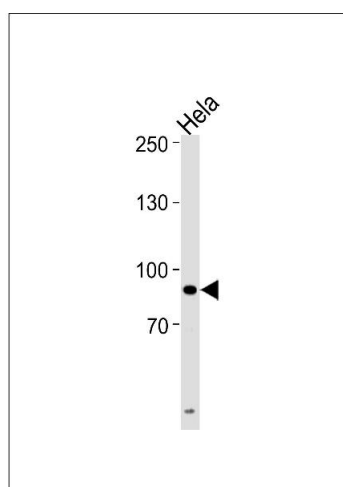
Immunofluorescence

Image 1. Fluorescent confocal image of HeLa cell stained with UHRF1 Antibody (Center) (ABIN652792 and ABIN2842520). HeLa cells were fixed with 4 % PFA (20 min), permeabilized with Triton X-100 (0.1 %, 10 min), then incubated with UHRF1 primary antibody (1:25, 1 h at 37 °C). For secondary antibody, Alexa Fluor® 488 conjugated donkey anti-rabbit antibody (green) was used (1:400, 50 min at 37 °C). Cytoplasmic actin was counterstained with Alexa Fluor® 555 (red) conjugated Phalloidin (7 units/mL, 1 h at 37 °C). Nuclei were counterstained with DAPI (10 µg/mL, 10 min). UHRF1 immunoreactivity is localized to Nucleus significantly.



Flow Cytometry

Image 2. UHRF1 Antibody (Center) (ABIN652792 and ABIN2842520) flow cytometry analysis of HeLa cells (bottom histogram) compared to a negative control cell (top histogram). FITC-conjugated goat-anti-rabbit secondary antibodies were used for the analysis.



Western Blotting

Image 3. UHRF1 Antibody (Center) (ABIN652792 and ABIN2842520) western blot analysis in HeLa cell line lysates (35 µg/lane). This demonstrates the UHRF1 antibody detected the UHRF1 protein (arrow).