

Datasheet for ABIN652796  
**anti-PLCL1 antibody (N-Term)**[Go to Product page](#)

## 2 Images

## Overview

Quantity:	400 µL
Target:	PLCL1
Binding Specificity:	AA 149-176, N-Term
Reactivity:	Human
Host:	Rabbit
Clonality:	Polyclonal
Conjugate:	This PLCL1 antibody is un-conjugated
Application:	Western Blotting (WB), Flow Cytometry (FACS)

## Product Details

Immunogen:	This PLCL1 antibody is generated from rabbits immunized with a KLH conjugated synthetic peptide between 149-176 amino acids from the N-terminal region of human PLCL1.
Clone:	RB22061
Isotype:	Ig Fraction
Predicted Reactivity:	M, Rat
Purification:	This antibody is purified through a protein A column, followed by peptide affinity purification.

## Target Details

Target:	PLCL1
Alternative Name:	PLCL1 ( <a href="#">PLCL1 Products</a> )

## Target Details

**Background:** PLCL1 is an inositol phospholipid-based intracellular signaling cascade. Shows no PLC activity to phosphatidylinositol 4,5-bisphosphate and sphatidylinositol. Component in the phospho-dependent endocytosis process of GABA A receptor (By similarity). Regulates the turnover of receptors and thus contributes to the maintenance of GABA-mediated synaptic inhibition. Its aberrant expression could contribute to the genesis and progression of lung carcinoma. Acts as a nhibitor of PPP1C.

**Molecular Weight:** 122728

**Gene ID:** 5334

**NCBI Accession:** [NP\\_006217](#)

**UniProt:** [Q15111](#)

## Application Details

**Application Notes:** WB: 1:1000. FC: 1:10~50

**Restrictions:** For Research Use only

## Handling

**Format:** Liquid

**Buffer:** Purified polyclonal antibody supplied in PBS with 0.09 % (W/V) sodium azide.

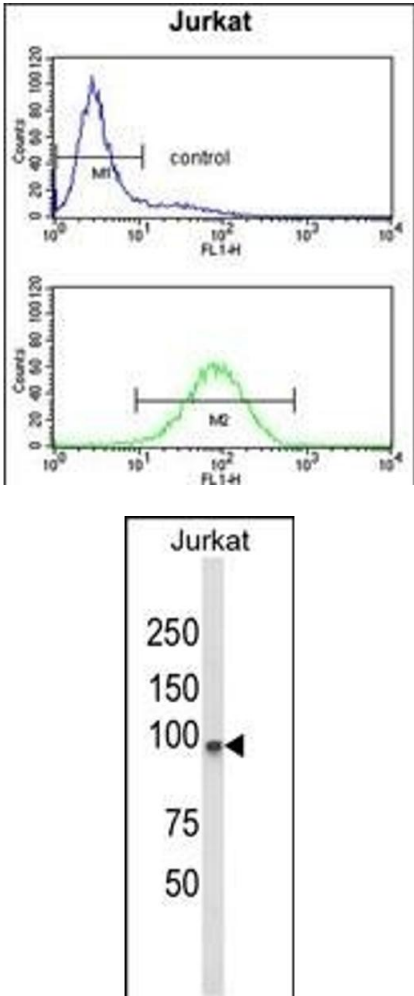
**Preservative:** Sodium azide

**Precaution of Use:** This product contains Sodium azide: a POISONOUS AND HAZARDOUS SUBSTANCE which should be handled by trained staff only.

**Storage:** 4 °C, -20 °C

**Storage Comment:** Maintain refrigerated at 2-8 °C for up to 6 months. For long term storage store at -20 °C in small aliquots to prevent freeze-thaw cycles.

**Expiry Date:** 6 months



Flow Cytometry

**Image 1.** PLCL1 Antibody (N-term) (ABIN652796 and ABIN2842522) flow cytometry analysis of Jurkat cells (bottom histogram) compared to a negative control cell (top histogram).FITC-conjugated goat-anti-rabbit secondary antibodies were used for the analysis.

Western Blotting

**Image 2.** Western blot analysis of PLCL1 Antibody (N-term) (ABIN652796 and ABIN2842522) in Jurkat cell line lysates (35 µg/lane). PLCL1 (arrow) was detected using the purified Pab.