

Datasheet for ABIN652801
anti-KLF16 antibody (AA 150-179)

2 Images

[Go to Product page](#)

Overview

Quantity:	400 µL
Target:	KLF16
Binding Specificity:	AA 150-179
Reactivity:	Human, Mouse
Host:	Rabbit
Clonality:	Polyclonal
Conjugate:	This KLF16 antibody is un-conjugated
Application:	Western Blotting (WB), Flow Cytometry (FACS)

Product Details

Immunogen:	This KLF16 antibody is generated from rabbits immunized with a KLH conjugated synthetic peptide between 150-179 amino acids from the Central region of human KLF16.
Clone:	RB22474
Isotype:	Ig Fraction
Purification:	This antibody is purified through a protein A column, followed by peptide affinity purification.

Target Details

Target:	KLF16
Alternative Name:	KLF16 (KLF16 Products)
Background:	KLF16 is a nuclear zinc finger transcription factor highly expressed in brain regions with

Target Details

abundant dopaminergic terminals, that binds GC and GT boxes and displaces Sp1 and Sp3 from these sequences. KLF16 modulates dopaminergic transmission in the brain.

Molecular Weight: 25431

Gene ID: 83855

NCBI Accession: [NP_114124](#)

UniProt: [Q9BXK1](#)

Application Details

Application Notes: WB: 1:1000. FC: 1:10~50

Restrictions: For Research Use only

Handling

Format: Liquid

Buffer: Purified polyclonal antibody supplied in PBS with 0.09 % (W/V) sodium azide.

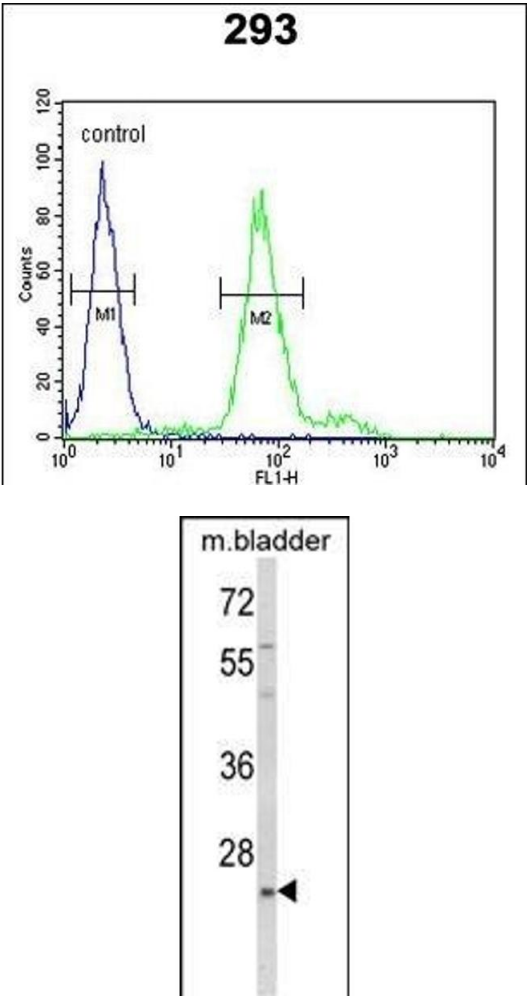
Preservative: Sodium azide

Precaution of Use: This product contains Sodium azide: a POISONOUS AND HAZARDOUS SUBSTANCE which should be handled by trained staff only.

Storage: 4 °C,-20 °C

Storage Comment: Maintain refrigerated at 2-8 °C for up to 6 months. For long term storage store at -20 °C in small aliquots to prevent freeze-thaw cycles.

Expiry Date: 6 months



Flow Cytometry

Image 1. KLF16 Antibody (Center) (ABIN652801 and ABIN2842524) flow cytometric analysis of 293 cells (right histogram) compared to a negative control cell (left histogram).FITC-conjugated goat-anti-rabbit secondary antibodies were used for the analysis.

Western Blotting

Image 2. Western blot analysis of KLF16 Antibody (Center) (ABIN652801 and ABIN2842524) in mouse bladder tissue lysates (35 µg/lane). KLF16 (arrow) was detected using the purified Pab.