



Datasheet for ABIN652808  
**anti-PTGER2 antibody (AA 118-147)**



[Go to Product page](#)

2 Images

Overview

Quantity:	400 µL
Target:	PTGER2
Binding Specificity:	AA 118-147
Reactivity:	Human
Host:	Rabbit
Clonality:	Polyclonal
Conjugate:	This PTGER2 antibody is un-conjugated
Application:	Western Blotting (WB), Flow Cytometry (FACS)

Product Details

Immunogen:	This PTGER2 antibody is generated from rabbits immunized with a KLH conjugated synthetic peptide between 118-147 amino acids from the Central region of human PTGER2.
Clone:	RB22812
Isotype:	Ig Fraction
Purification:	This antibody is purified through a protein A column, followed by peptide affinity purification.

Target Details

Target:	PTGER2
Alternative Name:	PTGER2 ( <a href="#">PTGER2 Products</a> )
Background:	PTGER2 is a receptor for prostaglandin E2, a metabolite of arachidonic acid which has different

## Target Details

---

biologic activities in a wide range of tissues. Mutations in this gene are associated with aspirin-induced susceptibility to asthma.

Molecular Weight: 39761

Gene ID: 5732

NCBI Accession: [NP\\_000947](#)

UniProt: [P43116](#)

## Application Details

---

Application Notes: WB: 1:1000. FC: 1:10~50

Restrictions: For Research Use only

## Handling

---

Format: Liquid

Buffer: Purified polyclonal antibody supplied in PBS with 0.09 % (W/V) sodium azide.

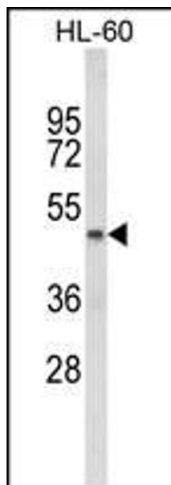
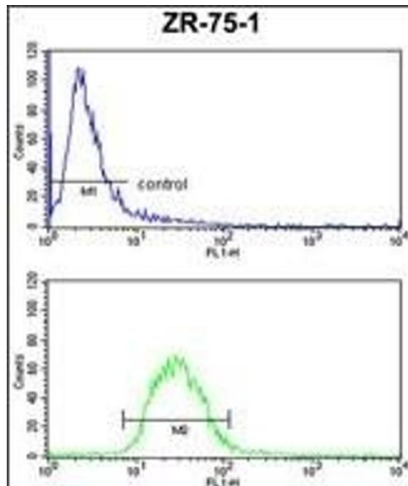
Preservative: Sodium azide

Precaution of Use: This product contains Sodium azide: a POISONOUS AND HAZARDOUS SUBSTANCE which should be handled by trained staff only.

Storage: 4 °C,-20 °C

Storage Comment: Maintain refrigerated at 2-8 °C for up to 6 months. For long term storage store at -20 °C in small aliquots to prevent freeze-thaw cycles.

Expiry Date: 6 months



### Flow Cytometry

**Image 1.** PTGER2 Antibody (Center) (ABIN652808 and ABIN2842529) FC analysis of ZR-75-1 cells (bottom histogram) compared to a negative control cell (top histogram). FITC-conjugated goat-anti-rabbit secondary antibodies were used for the analysis.

### Western Blotting

**Image 2.** Western blot analysis of PTGER2 Antibody (Center) (ABIN652808 and ABIN2842529) in HL-60 cell line lysates (35 µg/lane).PTGER2 (arrow) was detected using the purified Pab.