



[Go to Product page](#)

Datasheet for ABIN652812

## anti-CSR2BP antibody (AA 246-275)

### 2 Images

#### Overview

Quantity:	400 µL
Target:	CSR2BP
Binding Specificity:	AA 246-275
Reactivity:	Human, Mouse
Host:	Rabbit
Clonality:	Polyclonal
Conjugate:	This CSR2BP antibody is un-conjugated
Application:	Western Blotting (WB), Immunohistochemistry (Paraffin-embedded Sections) (IHC (p))

#### Product Details

Immunogen:	This CSR2BP antibody is generated from rabbits immunized with a KLH conjugated synthetic peptide between 246-275 amino acids from the Central region of human CSR2BP.
Clone:	RB23284
Isotype:	Ig Fraction
Purification:	This antibody is purified through a protein A column, followed by peptide affinity purification.

#### Target Details

Target:	CSR2BP
Alternative Name:	CSR2BP ( <a href="#">CSR2BP Products</a> )
Background:	CSR2 is a protein containing two LIM domains, which are double zinc finger motifs found in

## Target Details

---

proteins of diverse function. CSRP2 and some related proteins are thought to act as protein adapters, bridging two or more proteins to form a larger protein complex. The protein encoded by this gene binds to one of the LIM domains of CSRP2 and contains an acetyltransferase domain. Although the encoded protein has been detected in the cytoplasm, it is predominantly a nuclear protein. Two transcript variants encoding different isoforms have been found for this gene.

---

Molecular Weight: 88844

---

Gene ID: 57325

---

NCBI Accession: [NP\\_065397](#)

---

UniProt: [Q9H8E8](#)

## Application Details

---

---

Application Notes: WB: 1:1000. IHC-P: 1:50~100

---

Restrictions: For Research Use only

## Handling

---

---

Format: Liquid

---

Buffer: Purified polyclonal antibody supplied in PBS with 0.09 % (W/V) sodium azide.

---

Preservative: Sodium azide

---

Precaution of Use: This product contains Sodium azide: a POISONOUS AND HAZARDOUS SUBSTANCE which should be handled by trained staff only.

---

Storage: 4 °C, -20 °C

---

Storage Comment: Maintain refrigerated at 2-8 °C for up to 6 months. For long term storage store at -20 °C in small aliquots to prevent freeze-thaw cycles.

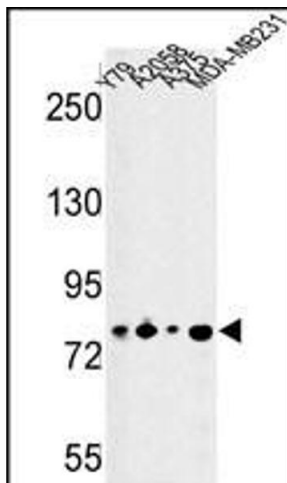
---

Expiry Date: 6 months



### Immunohistochemistry (Paraffin-embedded Sections)

**Image 1.** Formalin-fixed and paraffin-embedded human skeletal muscle reacted with CSRP2BP Antibody (Center), which was peroxidase-conjugated to the secondary antibody, followed by DAB staining. This data demonstrates the use of this antibody for immunohistochemistry, clinical relevance has not been evaluated.



### Western Blotting

**Image 2.** Western blot analysis of CSRP2BP Antibody (Center) (ABIN652812 and ABIN2842530) in Y79, , , MDA-M cell line lysates (35 µg/lane). CSRP2BP (arrow) was detected using the purified Pab.