

Datasheet for ABIN652814
anti-SELENBP1 antibody (C-Term)[Go to Product page](#)

4 Images

Overview

Quantity:	400 µL
Target:	SELENBP1
Binding Specificity:	AA 317-344, C-Term
Reactivity:	Human, Mouse
Host:	Rabbit
Clonality:	Polyclonal
Conjugate:	This SELENBP1 antibody is un-conjugated
Application:	Western Blotting (WB), Flow Cytometry (FACS)

Product Details

Immunogen:	This SELENBP1 antibody is generated from rabbits immunized with a KLH conjugated synthetic peptide between 317-344 amino acids from the C-terminal region of human SELENBP1.
Clone:	RB23510
Isotype:	Ig Fraction
Purification:	This antibody is purified through a protein A column, followed by peptide affinity purification.

Target Details

Target:	SELENBP1
Alternative Name:	SELENBP1 (SELENBP1 Products)
Background:	SELENBP1 is the selenium-binding protein family. Selenium is an essential nutrient that exhibits

Target Details

potent anticarcinogenic properties, and deficiency of selenium may cause certain neurologic diseases. It has been proposed that the effects of selenium in preventing cancer and neurologic diseases may be mediated by selenium-binding proteins.

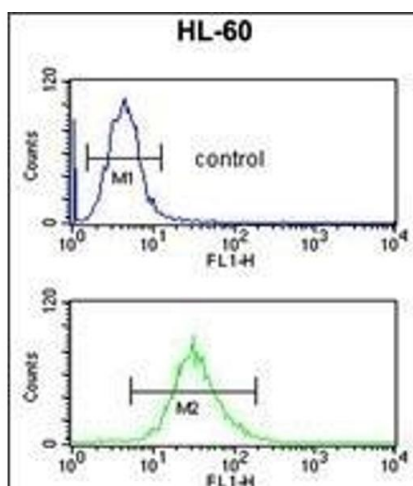
Molecular Weight:	52391
Gene ID:	8991
NCBI Accession:	NP_001245217 , NP_001245218 , NP_003935
UniProt:	Q13228
Pathways:	Brown Fat Cell Differentiation

Application Details

Application Notes:	WB: 1:1000. WB: 1:1000. WB: 1:1000. FC: 1:10~50
Restrictions:	For Research Use only

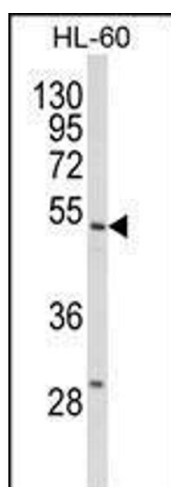
Handling

Format:	Liquid
Buffer:	Purified polyclonal antibody supplied in PBS with 0.09 % (W/V) sodium azide.
Preservative:	Sodium azide
Precaution of Use:	This product contains Sodium azide: a POISONOUS AND HAZARDOUS SUBSTANCE which should be handled by trained staff only.
Storage:	4 °C,-20 °C
Storage Comment:	Maintain refrigerated at 2-8 °C for up to 6 months. For long term storage store at -20 °C in small aliquots to prevent freeze-thaw cycles.
Expiry Date:	6 months



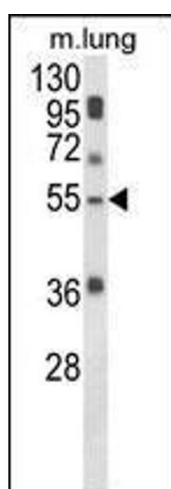
Flow Cytometry

Image 1. SELENBP1 Antibody (C-term) (ABIN652814 and ABIN2842531) flow cytometric analysis of HL-60 cells (bottom histogram) compared to a negative control cell (top histogram). FITC-conjugated goat-anti-rabbit secondary antibodies were used for the analysis.



Western Blotting

Image 2. Western blot analysis of SELENBP1 Antibody (C-term) (ABIN652814 and ABIN2842531) in HL-60 cell line lysates (35 µg/lane). SELENBP1 (arrow) was detected using the purified Pab.



Western Blotting

Image 3. Western blot analysis of SELENBP1 Antibody (C-term) (ABIN652814 and ABIN2842531) in mouse lung tissue lysates (35 µg/lane). SELENBP1 (arrow) was detected using the purified Pab.

Please check the [product details page](#) for more images. Overall 4 images are available for ABIN652814.