

Datasheet for ABIN652820  
**anti-CYP51A1 antibody (AA 250-279)**

## 3 Images

[Go to Product page](#)

## Overview

Quantity:	400 µL
Target:	CYP51A1
Binding Specificity:	AA 250-279
Reactivity:	Human
Host:	Rabbit
Clonality:	Polyclonal
Conjugate:	This CYP51A1 antibody is un-conjugated
Application:	Western Blotting (WB), Immunohistochemistry (Paraffin-embedded Sections) (IHC (p)), Flow Cytometry (FACS)

## Product Details

Immunogen:	This CYP51A1 antibody is generated from rabbits immunized with a KLH conjugated synthetic peptide between 250-279 amino acids from the Central region of human CYP51A1.
Clone:	RB17075
Isotype:	Ig Fraction
Predicted Reactivity:	Pr
Purification:	This antibody is prepared by Saturated Ammonium Sulfate (SAS) precipitation followed by dialysis against PBS.

## Target Details

Target:	CYP51A1
---------	---------

## Target Details

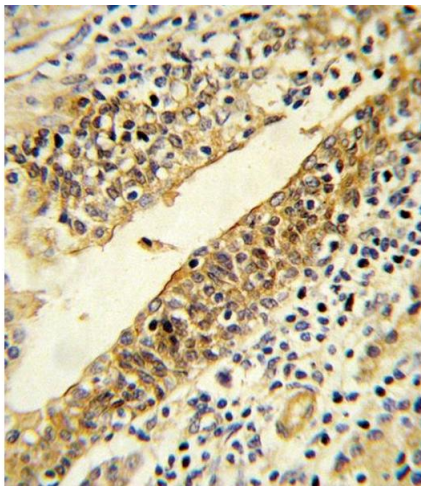
Alternative Name:	CYP51A1 ( <a href="#">CYP51A1 Products</a> )
Background:	CYP51A1 is a member of the cytochrome P450 superfamily of enzymes. The cytochrome P450 proteins are monooxygenases which catalyze many reactions involved in drug metabolism and synthesis of cholesterol, steroids and other lipids. This endoplasmic reticulum protein participates in the synthesis of cholesterol by catalyzing the removal of the 14alpha-methyl group from lanosterol.
Molecular Weight:	56806
Gene ID:	1595
NCBI Accession:	<a href="#">NP_000777</a> , <a href="#">NP_001139624</a>
UniProt:	<a href="#">Q16850</a>

## Application Details

Application Notes:	WB: 1:1000. IHC-P: 1:10~50. FC: 1:10~50
Restrictions:	For Research Use only

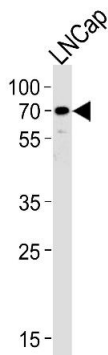
## Handling

Format:	Liquid
Buffer:	Purified polyclonal antibody supplied in PBS with 0.09 % (W/V) sodium azide.
Preservative:	Sodium azide
Precaution of Use:	This product contains Sodium azide: a POISONOUS AND HAZARDOUS SUBSTANCE which should be handled by trained staff only.
Storage:	4 °C, -20 °C
Storage Comment:	Maintain refrigerated at 2-8 °C for up to 6 months. For long term storage store at -20 °C in small aliquots to prevent freeze-thaw cycles.
Expiry Date:	6 months



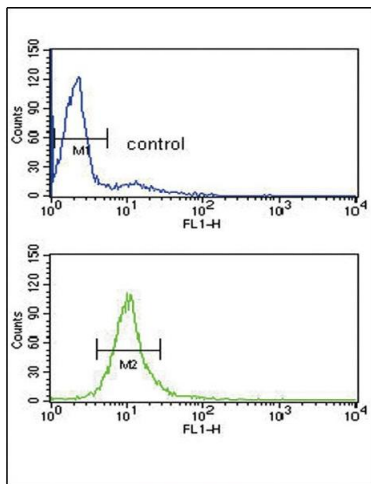
### Immunohistochemistry (Paraffin-embedded Sections)

**Image 1.** Formalin-fixed and paraffin-embedded human prostate carcinoma reacted with CYP51A1 Antibody (Center) (ABIN652820 and ABIN2842535) , which was peroxidase-conjugated to the secondary antibody, followed by DAB staining. This data demonstrates the use of this antibody for immunohistochemistry, clinical relevance has not been evaluated.



### Western Blotting

**Image 2.** Western blot analysis of lysate from LNCap cell line, using CYP51A1 Antibody (Center) (ABIN652820 and ABIN2842535). (ABIN652820 and ABIN2842535) was diluted at 1:1000 at each lane. A goat anti-rabbit IgG H&L(HRP) at 1:5000 dilution was used as the secondary antibody. Lysate at 35 µg.



### Flow Cytometry

**Image 3.** CYP51A1 Antibody (Center) (ABIN652820 and ABIN2842535) flow cytometry analysis of HL-60 cells (bottom histogram) compared to a negative control cell (top histogram).FITC-conjugated goat-anti-rabbit secondary antibodies were used for the analysis.