

Datasheet for ABIN652826
anti-GLIS1 antibody (N-Term)[Go to Product page](#)

2 Images

Overview

Quantity:	400 µL
Target:	GLIS1
Binding Specificity:	AA 133-161, N-Term
Reactivity:	Human, Mouse
Host:	Rabbit
Clonality:	Polyclonal
Conjugate:	This GLIS1 antibody is un-conjugated
Application:	Western Blotting (WB), Immunohistochemistry (Paraffin-embedded Sections) (IHC (p))

Product Details

Immunogen:	This GLIS1 antibody is generated from rabbits immunized with a KLH conjugated synthetic peptide between 133-161 amino acids from the N-terminal region of human GLIS1.
Clone:	RB21211
Isotype:	Ig Fraction
Purification:	This antibody is purified through a protein A column, followed by peptide affinity purification.

Target Details

Target:	GLIS1
Alternative Name:	GLIS1 (GLIS1 Products)
Background:	GLIS1 is a GLI (MIM 165220)-related Kruppel-like zinc finger protein that functions as an

Target Details

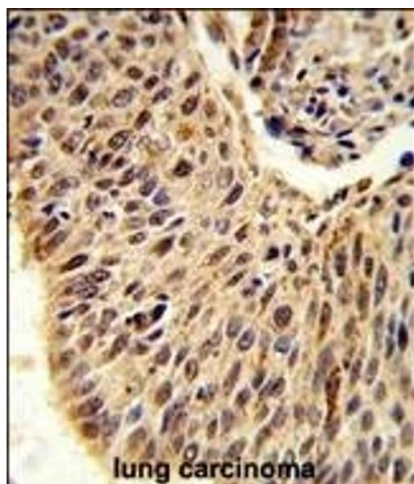
	activator and repressor of transcription (Kim et al., 2002 [PubMed 12042312]).
Molecular Weight:	65976
Gene ID:	148979
NCBI Accession:	NP_671726
UniProt:	Q8NBF1

Application Details

Application Notes:	WB: 1:1000. IHC-P: 1:50~100
Restrictions:	For Research Use only

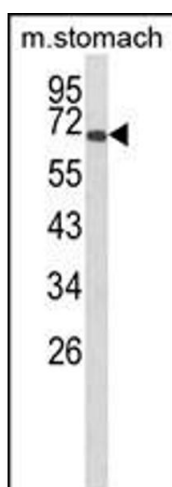
Handling

Format:	Liquid
Buffer:	Purified polyclonal antibody supplied in PBS with 0.09 % (W/V) sodium azide.
Preservative:	Sodium azide
Precaution of Use:	This product contains Sodium azide: a POISONOUS AND HAZARDOUS SUBSTANCE which should be handled by trained staff only.
Storage:	4 °C,-20 °C
Storage Comment:	Maintain refrigerated at 2-8 °C for up to 6 months. For long term storage store at -20 °C in small aliquots to prevent freeze-thaw cycles.
Expiry Date:	6 months



Immunohistochemistry (Paraffin-embedded Sections)

Image 1. Formalin-fixed and paraffin-embedded human lung carcinoma reacted with GLIS1 Antibody (N-term), which was peroxidase-conjugated to the secondary antibody, followed by DAB staining. This data demonstrates the use of this antibody for immunohistochemistry, clinical relevance has not been evaluated.



Western Blotting

Image 2. Western blot analysis of GLIS1 Antibody (N-term) (ABIN652826 and ABIN2842538) in mouse stomach tissue lysates (35 µg/lane). GLIS1 (arrow) was detected using the purified Pab.