



[Go to Product page](#)

Datasheet for ABIN652828

## anti-TCERG1L antibody (AA 392-421)

### 3 Images

#### Overview

Quantity:	400 µL
Target:	TCERG1L
Binding Specificity:	AA 392-421
Reactivity:	Human, Mouse
Host:	Rabbit
Clonality:	Polyclonal
Conjugate:	This TCERG1L antibody is un-conjugated
Application:	Western Blotting (WB), Flow Cytometry (FACS), Immunohistochemistry (Paraffin-embedded Sections) (IHC (p))

#### Product Details

Immunogen:	This TCERG1L antibody is generated from rabbits immunized with a KLH conjugated synthetic peptide between 392-421 amino acids from the Central region of human TCERG1L.
Clone:	RB21269
Isotype:	Ig Fraction
Purification:	This antibody is purified through a protein A column, followed by peptide affinity purification.

#### Target Details

Target:	TCERG1L
Alternative Name:	TCERG1L ( <a href="#">TCERG1L Products</a> )

## Target Details

Molecular Weight:	65660
Gene ID:	256536
NCBI Accession:	<a href="#">NP_777597</a>
UniProt:	<a href="#">Q5VWI1</a>

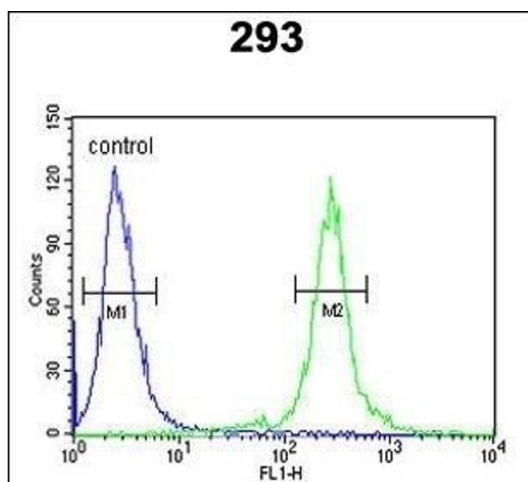
## Application Details

Application Notes:	WB: 1:1000. IHC-P: 1:50~100. FC: 1:10~50
Restrictions:	For Research Use only

## Handling

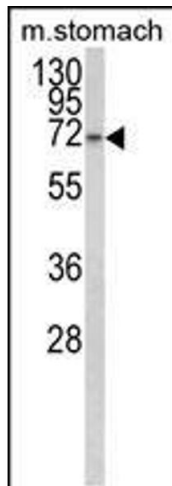
Format:	Liquid
Buffer:	Purified polyclonal antibody supplied in PBS with 0.09 % (W/V) sodium azide.
Preservative:	Sodium azide
Precaution of Use:	This product contains Sodium azide: a POISONOUS AND HAZARDOUS SUBSTANCE which should be handled by trained staff only.
Storage:	4 °C,-20 °C
Storage Comment:	Maintain refrigerated at 2-8 °C for up to 6 months. For long term storage store at -20 °C in small aliquots to prevent freeze-thaw cycles.
Expiry Date:	6 months

## Images



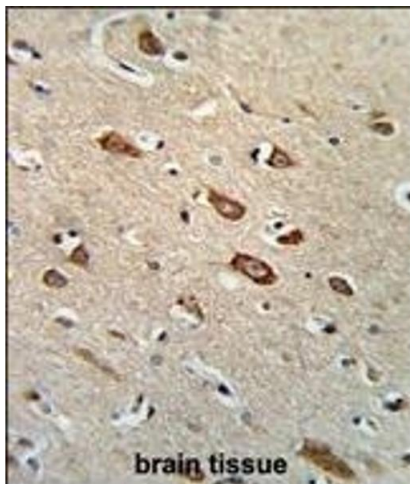
### Flow Cytometry

**Image 1.** TCERG1L Antibody (Center) (ABIN652828 and ABIN2842540) flow cytometric analysis of 293 cells (right histogram) compared to a negative control cell (left histogram). FITC-conjugated goat-anti-rabbit secondary antibodies were used for the analysis.



### Western Blotting

**Image 2.** Western blot analysis of TCERG1L Antibody (Center) (ABIN652828 and ABIN2842540) in mouse stomach tissue lysates (35 µg/lane). TCERG1L (arrow) was detected using the purified Pab.



### Immunohistochemistry (Paraffin-embedded Sections)

**Image 3.** Formalin-fixed and paraffin-embedded human brain tissue reacted with TCERG1L Antibody (Center), which was peroxidase-conjugated to the secondary antibody, followed by DAB staining. This data demonstrates the use of this antibody for immunohistochemistry, clinical relevance has not been evaluated.