



[Go to Product page](#)

Datasheet for ABIN652830

anti-CTRP6 antibody (N-Term)

3 Images

Overview

Quantity:	400 µL
Target:	CTRP6 (C1QTNF6)
Binding Specificity:	AA 27-53, N-Term
Reactivity:	Human
Host:	Rabbit
Clonality:	Polyclonal
Conjugate:	This CTRP6 antibody is un-conjugated
Application:	Western Blotting (WB), Immunohistochemistry (Paraffin-embedded Sections) (IHC (p))

Product Details

Immunogen:	This C1QTNF6 antibody is generated from rabbits immunized with a KLH conjugated synthetic peptide between 27-53 amino acids from the N-terminal region of human C1QTNF6.
Clone:	RB21316
Isotype:	Ig Fraction
Purification:	This antibody is purified through a protein A column, followed by peptide affinity purification.

Target Details

Target:	CTRP6 (C1QTNF6)
Alternative Name:	C1QTNF6 (C1QTNF6 Products)
Background:	CTRP6 is an adipokine. It contains at least 4 glycosylation motifs, suggesting that it may be

Target Details

highly post-translationally modified. Unlike adiponectin, which is expressed exclusively by differentiated adipocytes, the CTRPs are expressed in a wide variety of tissues. These proteins are thought to act mainly on liver and muscle tissue to control glucose and lipid metabolism.

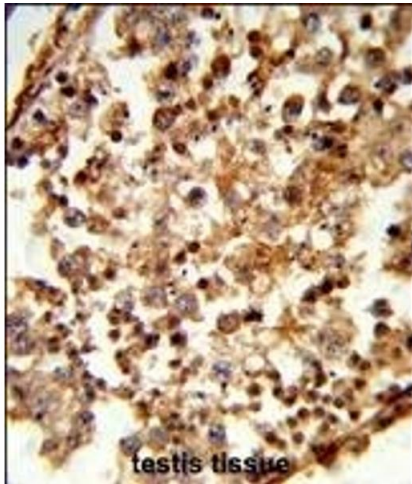
Molecular Weight:	30861
Gene ID:	114904
NCBI Accession:	NP_114116 , NP_872292
UniProt:	Q9BXI9

Application Details

Application Notes:	WB: 1:1000. WB: 1:1000. IHC-P: 1:50~100
Restrictions:	For Research Use only

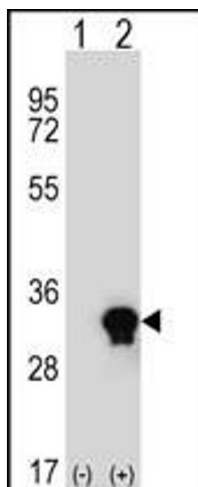
Handling

Format:	Liquid
Buffer:	Purified polyclonal antibody supplied in PBS with 0.09 % (W/V) sodium azide.
Preservative:	Sodium azide
Precaution of Use:	This product contains Sodium azide: a POISONOUS AND HAZARDOUS SUBSTANCE which should be handled by trained staff only.
Storage:	4 °C, -20 °C
Storage Comment:	Maintain refrigerated at 2-8 °C for up to 6 months. For long term storage store at -20 °C in small aliquots to prevent freeze-thaw cycles.
Expiry Date:	6 months



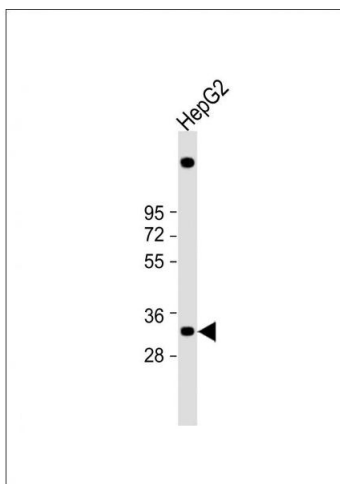
Immunohistochemistry (Paraffin-embedded Sections)

Image 1. Formalin-fixed and paraffin-embedded human testis tissue reacted with C1QTNF6 Antibody (N-term), which was peroxidase-conjugated to the secondary antibody, followed by DAB staining. This data demonstrates the use of this antibody for immunohistochemistry, clinical relevance has not been evaluated.



Western Blotting

Image 2. Western blot analysis of C1QTNF6 (arrow) using rabbit polyclonal C1QTNF6 Antibody (N-term) (ABIN652830 and ABIN2842542). 293 cell lysates (2 µg/lane) either nontransfected (Lane 1) or transiently transfected (Lane 2) with the C1QTNF6 gene.



Western Blotting

Image 3. Anti-C1QTNF6 Antibody (N-term) at 1:1000 dilution + HepG2 whole cell lysate Lysates/proteins at 20 µg per lane. Secondary Goat Anti-Rabbit IgG, (H+L), Peroxidase conjugated at 1/10000 dilution. Predicted band size : 29 kDa Blocking/Dilution buffer: 5 % NFDM/TBST.