

Datasheet for ABIN652831
anti-GAL3ST1 antibody (AA 88-116)[Go to Product page](#)

4 Images

Overview

Quantity:	400 µL
Target:	GAL3ST1
Binding Specificity:	AA 88-116
Reactivity:	Human, Mouse
Host:	Rabbit
Clonality:	Polyclonal
Conjugate:	This GAL3ST1 antibody is un-conjugated
Application:	Western Blotting (WB), Immunohistochemistry (Paraffin-embedded Sections) (IHC (p)), Flow Cytometry (FACS)

Product Details

Immunogen:	This GAL3ST1 antibody is generated from rabbits immunized with a KLH conjugated synthetic peptide between 88-116 amino acids from the Central region of human GAL3ST1.
Clone:	RB21441
Isotype:	Ig Fraction
Purification:	This antibody is purified through a protein A column, followed by peptide affinity purification.

Target Details

Target:	GAL3ST1
Alternative Name:	GAL3ST1 (GAL3ST1 Products)

Target Details

Background: Sulfonation, an important step in the metabolism of many drugs, xenobiotics, hormones, and neurotransmitters, is catalyzed by sulfotransferases. GAL3ST1 is galactosylceramide sulfotransferase which catalyzes the conversion between 3'-phosphoadenylylsulfate + a galactosylceramide to adenosine 3',5'-bisphosphate + galactosylceramide sulfate. Activity of this sulfotransferase is enhanced in renal cell carcinoma.

Molecular Weight: 48764

Gene ID: 9514

NCBI Accession: [NP_004852](#)

UniProt: [Q99999](#)

Application Details

Application Notes: WB: 1:1000. WB: 1:2000. IHC-P: 1:50~100. FC: 1:10~50

Restrictions: For Research Use only

Handling

Format: Liquid

Buffer: Purified polyclonal antibody supplied in PBS with 0.09 % (W/V) sodium azide.

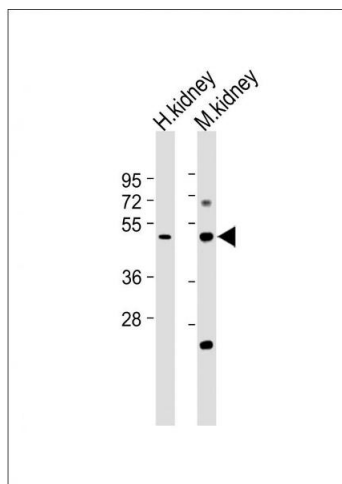
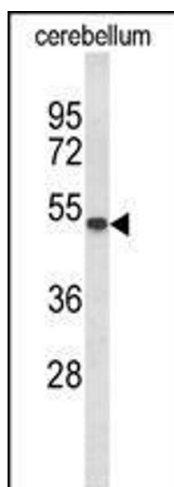
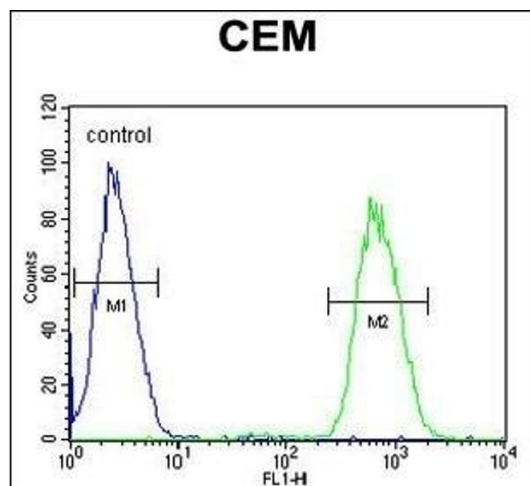
Preservative: Sodium azide

Precaution of Use: This product contains Sodium azide: a POISONOUS AND HAZARDOUS SUBSTANCE which should be handled by trained staff only.

Storage: 4 °C,-20 °C

Storage Comment: Maintain refrigerated at 2-8 °C for up to 6 months. For long term storage store at -20 °C in small aliquots to prevent freeze-thaw cycles.

Expiry Date: 6 months



Flow Cytometry

Image 1. GAL3ST1 Antibody (Center) (ABIN652831 and ABIN2842543) flow cytometric analysis of CEM cells (right histogram) compared to a negative control cell (left histogram). FITC-conjugated goat-anti-rabbit secondary antibodies were used for the analysis.

Western Blotting

Image 2. Western blot analysis of GAL3ST1 Antibody (Center) (ABIN652831 and ABIN2842543) in mouse cerebellum tissue lysates (35 µg/lane). GAL3ST1 (arrow) was detected using the purified Pab.

Western Blotting

Image 3. All lanes : Anti-GAL3ST1 Antibody (Center) at 1:2000 dilution Lane 1: Human kidney lysate Lane 2: Mouse kidney lysate Lysates/proteins at 20 µg per lane. Secondary Goat Anti-Rabbit IgG, (H+L), Peroxidase conjugated at 1/10000 dilution. Predicted band size : 49 kDa Blocking/Dilution buffer: 5 % NFDm/TBST.

Please check the [product details page](#) for more images. Overall 4 images are available for ABIN652831.