

Datasheet for ABIN652835
anti-GPA33 antibody (C-Term)[Go to Product page](#)

4 Images

Overview

Quantity:	400 µL
Target:	GPA33
Binding Specificity:	AA 264-293, C-Term
Reactivity:	Human
Host:	Rabbit
Clonality:	Polyclonal
Conjugate:	This GPA33 antibody is un-conjugated
Application:	Western Blotting (WB), Flow Cytometry (FACS), Immunohistochemistry (Paraffin-embedded Sections) (IHC (p))

Product Details

Immunogen:	This GPA33 antibody is generated from rabbits immunized with a KLH conjugated synthetic peptide between 264-293 amino acids from the C-terminal region of human GPA33.
Clone:	RB21529
Isotype:	Ig Fraction
Purification:	This antibody is purified through a protein A column, followed by peptide affinity purification.

Target Details

Target:	GPA33
Alternative Name:	GPA33 (GPA33 Products)

Target Details

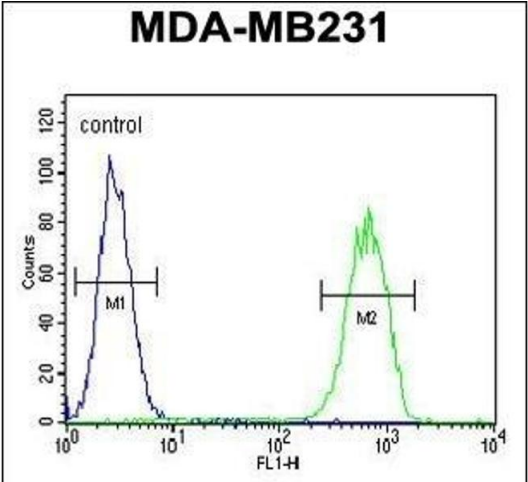
Background:	GPA33 is a cell surface antigen that is expressed in greater than 95 % of human colon cancers. It may play a role in cell-cell recognition and signaling.
Molecular Weight:	35632
Gene ID:	10223
NCBI Accession:	NP_005805
UniProt:	Q99795

Application Details

Application Notes:	WB: 1:1000. WB: 1:1000. IHC-P: 1:50~100. FC: 1:10~50
Restrictions:	For Research Use only

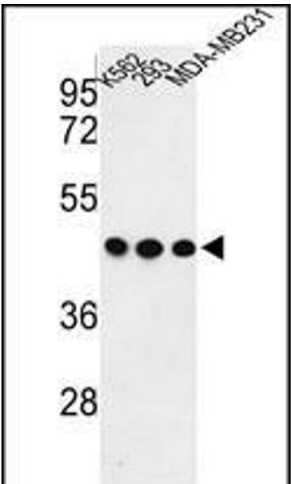
Handling

Format:	Liquid
Buffer:	Purified polyclonal antibody supplied in PBS with 0.09 % (W/V) sodium azide.
Preservative:	Sodium azide
Precaution of Use:	This product contains Sodium azide: a POISONOUS AND HAZARDOUS SUBSTANCE which should be handled by trained staff only.
Storage:	4 °C,-20 °C
Storage Comment:	Maintain refrigerated at 2-8 °C for up to 6 months. For long term storage store at -20 °C in small aliquots to prevent freeze-thaw cycles.
Expiry Date:	6 months



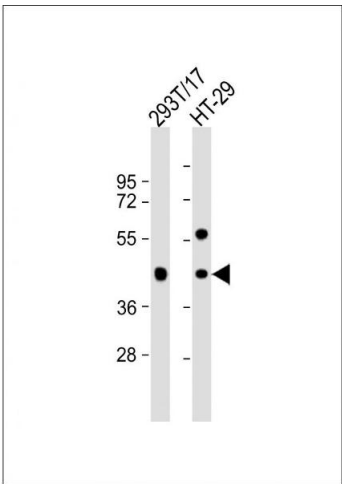
Flow Cytometry

Image 1. G Antibody (C-term) (ABIN652835 and ABIN2842544) flow cytometric analysis of MDA-M cells (right histogram) compared to a negative control cell (left histogram). FITC-conjugated goat-anti-rabbit secondary antibodies were used for the analysis.



Western Blotting

Image 2. Western blot analysis of G Antibody (C-term) (ABIN652835 and ABIN2842544) in K562, 293, MDA-M cell line lysates (35 µg/lane). G (arrow) was detected using the purified Pab.



Western Blotting

Image 3. All lanes : Anti-G Antibody (C-term) at 1:1000 dilution Lane 1: 293T/17 whole cell lysate Lane 2: HT-29 whole cell lysate Lysates/proteins at 20 µg per lane. Secondary Goat Anti-Rabbit IgG, (H+L), Peroxidase conjugated at 1/10000 dilution. Predicted band size : 36 kDa Blocking/Dilution buffer: 5 % NFDM/TBST.

Please check the [product details page](#) for more images. Overall 4 images are available for ABIN652835.