



[Go to Product page](#)

Datasheet for ABIN652839

## anti-B4GALT1 antibody (C-Term)

### 2 Images

#### Overview

Quantity:	400 µL
Target:	B4GALT1
Binding Specificity:	AA 329-358, C-Term
Reactivity:	Human
Host:	Rabbit
Clonality:	Polyclonal
Conjugate:	This B4GALT1 antibody is un-conjugated
Application:	Western Blotting (WB), Flow Cytometry (FACS)

#### Product Details

Immunogen:	This B4GalT1 antibody is generated from rabbits immunized with a KLH conjugated synthetic peptide between 329-358 amino acids from the C-terminal region of human B4GalT1.
Clone:	RB21685
Isotype:	Ig Fraction
Predicted Reactivity:	B, M
Purification:	This antibody is purified through a protein A column, followed by peptide affinity purification.

#### Target Details

Target:	B4GALT1
Alternative Name:	B4GalT1 ( <a href="#">B4GALT1 Products</a> )

## Target Details

---

Background:	B4GalT1 is an enzyme that participates both in glycoconjugate and lactose biosynthesis. For the first activity, the enzyme adds galactose to N-acetylglucosamine residues that are either monosaccharides or the nonreducing ends of glycoprotein carbohydrate chains. The second activity is restricted to lactating mammary tissues where the enzyme forms a heterodimer with alpha-lactalbumin to catalyze $\text{UDP-galactose} + \text{D-glucose} \rightleftharpoons \text{UDP} + \text{lactose}$ . The two enzymatic forms result from alternate transcription initiation sites and post-translational processing.
Molecular Weight:	43920
Gene ID:	2683
NCBI Accession:	<a href="#">NP_001488</a>
UniProt:	<a href="#">P15291</a>
Pathways:	<a href="#">Glycosaminoglycan Metabolic Process</a>

## Application Details

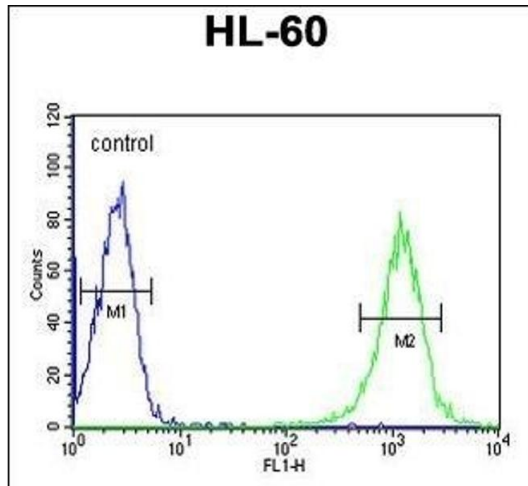
---

Application Notes:	WB: 1:1000. FC: 1:10~50
Restrictions:	For Research Use only

## Handling

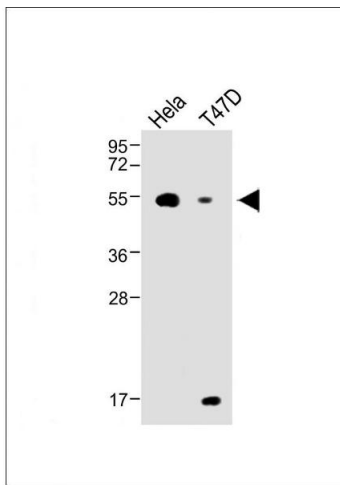
---

Format:	Liquid
Buffer:	Purified polyclonal antibody supplied in PBS with 0.09 % (W/V) sodium azide.
Preservative:	Sodium azide
Precaution of Use:	This product contains Sodium azide: a POISONOUS AND HAZARDOUS SUBSTANCE which should be handled by trained staff only.
Storage:	4 °C,-20 °C
Storage Comment:	Maintain refrigerated at 2-8 °C for up to 6 months. For long term storage store at -20 °C in small aliquots to prevent freeze-thaw cycles.
Expiry Date:	6 months



### Flow Cytometry

**Image 1.** B4GalT1 Antibody (C-term) (ABIN652839 and ABIN2842545) flow cytometric analysis of HL-60 cells (right histogram) compared to a negative control cell (left histogram). FITC-conjugated goat-anti-rabbit secondary antibodies were used for the analysis.



### Western Blotting

**Image 2.** All lanes : Anti-B4GalT1 Antibody (C-term) at 1:1000 dilution Lane 1: HeLa, whole cell lysate Lane 2: T47D whole cell lysate ysates/proteins at 20 µg per lane. Secondary Goat Anti-Rabbit IgG, (H+L), Peroxidase conjugated at 1/10000 dilution. Predicted band size : 50 kDa Blocking/Dilution buffer: 5 % NFDm/TBST.